

SAMPLE

ASSEMBLY DRAWINGS FOR A
42'W X 16'-2"H EAVE X 48'L
KELLY KLOSURE BUILDING
"SAMPLE BUILDING"

K.K. ORDER #: SAMPLE
P.O. #: SAMPLE

- 1) BUILDING STRUCTURE
- A) BUILDING STRUCTURAL DESIGN CRITERIA

a) BUILDING CODE:

2006 IBC

b) ROOF LOAD:

20 PSF (GROUND SNOW LOAD)

c) SNOW DRIFT LOAD:

NONE

d) WIND LOAD:

90 MPH (3 SECOND GUST)

e) SEISMIC:

DESIGN CATEGORY "B", SOIL SITE CLASS "D"

f) OCCUPANCY CATEGORY:

2
- B) THIS BUILDING HAS BEEN DESIGNED IN ACCORDANCE WITH THE BUILDING CODE AND BASIC STRUCTURAL DESIGN DATA LISTED ABOVE. THE BUILDING HAS BEEN DESIGNED AND ENGINEERED FROM A STRUCTURAL ASPECT ONLY. OTHER CODE COMPLIANCE ISSUES SUCH AS OCCUPANCY, EGRESS, HVAC, ELECTRICAL, MECHANICAL, FIRE SAFETY ETC. IS THE RESPONSIBILITY OF THE END USER OR ITS REPRESENTATIVES. MATERIAL SPECIFICATIONS ARE AVAILABLE UPON REQUEST.
- C) ANY REQUIRED "MAJOR PENETRATIONS" THROUGH THE WALLS OR ROOF OF THE BUILDING SHOULD BE NOTED AND LOCATED ON THESE APPROVAL DRAWINGS BEFORE RELEASE FOR MANUFACTURING IS GIVEN. THIS WILL ALLOW KELLY TO MODIFY FRAMING AS NECESSARY. FIELD CUTTING OF ANY STEEL FRAMING MEMBERS IS NOT RECOMMENDED AND WILL VOID THE STRUCTURAL DESIGN CRITERIA AND ANY WARRANTIES. "MAJOR PENETRATIONS" ARE ITEMS LIKE HVAC DUCTS AND LARGE PIPES OR CONDUITS.
- D) IF PERMITS ARE TO BE PULLED FOR THIS PROJECT, KELLY KLOSURE RECOMMENDS THAT THIS BE DONE BEFORE BUILDING IS RELEASED FOR MANUFACTURING. ANY INSPECTIONS REQUIRED FOR PERMITS ARE THE RESPONSIBILITY OF THE END USER OR ITS REPRESENTATIVES.

IMPORTANT NOTE: ANY AND ALL CHANGES, MODIFICATIONS OR RETROFITS REQUIRED DUE TO PERMITS BEING PULLED AFTER THE BUILDING IS MANUFACTURED ARE NOT KELLY'S RESPONSIBILITY.

IMPORTANT NOTES

PLEASE READ BEFORE BEGINNING ASSEMBLY OF BUILDING
WARRANTY WILL BE VOIDED IF THESE PROCEDURES ARE NOT FOLLOWED

Technical Support & Service

A Kelly Klosure Service Representative is just a phone call away.

Please feel free to call with any questions, suggestions or issues as they arise!

Please call 1-800-228-7230 and ask for Service during normal business hours.

If calling after hours, please leave a voice mail in the general mailbox.

Please include the Kelly Klosure Order Number shown to the left on this page when calling for service.

Damage & Shipping Shortages

Any damage or shipping shortages should be reported to Kelly Klosure within 15 days of delivery. Kelly will expedite replacement material. However, Kelly is not liable for replacement material purchased locally without prior approval.

Back Charges

Kelly Klosure must give prior approval of any work relating to shortages or errors in manufacturing. If prior approval is not given, back charges will be denied.

Exterior Fasteners

Due to vibration during the shipping process, some screws that hold the exterior steel sheeting to the panel frame may have been loosened. The building erector is to check and tighten all of the screws prior to building assembly. The screws are considered tight when the rubber washer is in complete contact with the sheeting and is not loose to the touch.

Bolt Installation

All bolts shall be "Snug Tight". A "Snug Tight" condition is the tightness that is attained with a few impacts of an impact wrench or the full effort of a crew member using an ordinary spud wrench to bring the connected plies into firm contact.

Building Penetrations

Every effort was made by Kelly during the approval process to factory frame any required wall or roof penetrations, or otherwise ensure that framing will not be interfered with for field cut penetrations. Prior approval and instructions for modification must be obtained from Kelly before cutting or modifying any structural steel framework, otherwise the warranty will be void.

Manufacturer's Disclaimer

The manufacturer has designed and engineered this system. Variations and/or modifications to the system or components will void and nullify any and all warranties, both written and/or implied, and liability for defects in the system and it's components. Manufacturer further accepts no responsibility and/or liability for obtaining or maintaining local, regional or national building permits, inspections or documents that may be required.

Lightning Protection Disclaimer

Kelly Klosure Systems roof & wall panels are manufactured from Galvalume® coated steel. To prevent galvanic corrosion, the roof and wall panels must not come into contact with, or water runoff from, copper, lead or copper bearing brasses. For lightning protection, aluminum conductors and aluminum or stainless steel clamps and fixtures are compatible with Galvalume® coated steel.

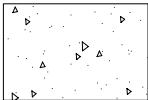
DRAWING INDEX

PAGE #1	PANEL & PANEL RACK HANDLING TIPS
PAGE #2	BASIC BUILDING COMPONENTS
3	ELEVATIONS
4	MATERIAL LISTS
5	BUILDING LAYFLAT
6	FOUNDATION PREPARATION PLAN VIEW
7	BASE SECTIONS
8	PLAN VIEW & DETAILS
9	TYPICAL CROSS-SECTION
10	CROSS-SECTION DETAILS
SUPPLEMENT SHEETS	
SS-1	BUILDING ASSEMBLY LIFTING INSTRUCTIONS
SS-2	DOOR INSTALLATION INSTRUCTIONS
SS-3	BUILDING FLASHING INSTALLATION INSTRUCTIONS
SS-4	BASE FLASHING INSTALLATION ISOMETRIC
SS-5	BASE FLASHING INSTALLATION ISOMETRIC (AT DOORS)
SS-6	BASE FLASHING CORNER CAP INSTALLATION
SS-7	DOUBLE DOOR FLASHING INSTALLATION INSTRUCTIONS
SS-8	EAVE FLASHING & CLOSURE CAP INSTALLATION
SS-9	GUTTER & DOWNSPOUT LAYFLAT
SS-10	GUTTER & DOWNSPOUT INSTALLATION INSTRUCTIONS
SS-11	GUTTER & DOWNSPOUT INSTALLATION DETAILS
SS-12	RIDGE CAP INSTALLATION
SS-13	EQUIPMENT DOOR FLASHING INSTALLATION
SS-14	LIGHT TRANSMITTING ROOF PANEL INSTALLATION
SYSTEM 2 ASSEMBLY SEQUENCE	
AS-1	SYSTEM 2 TYPICAL ASSEMBLY SEQUENCE - PAGE #1
AS-2	SYSTEM 2 TYPICAL ASSEMBLY SEQUENCE - PAGE #2
AS-3	SYSTEM 2 TYPICAL ASSEMBLY SEQUENCE - PAGE #3
AS-4	SYSTEM 2 TYPICAL ASSEMBLY SEQUENCE - PAGE #4
AS-5	SYSTEM 2 TYPICAL ASSEMBLY SEQUENCE - PAGE #5
AS-6	SYSTEM 2 TYPICAL ASSEMBLY SEQUENCE - PAGE #6
AS-7	SYSTEM 2 TYPICAL ASSEMBLY SEQUENCE - PAGE #7
AS-8	SYSTEM 2 TYPICAL ASSEMBLY SEQUENCE - PAGE #8

ARCHITECTURAL LEGEND



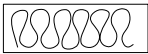
EARTH



CONCRETE



RIGID INSULATION



BATT INSULATION

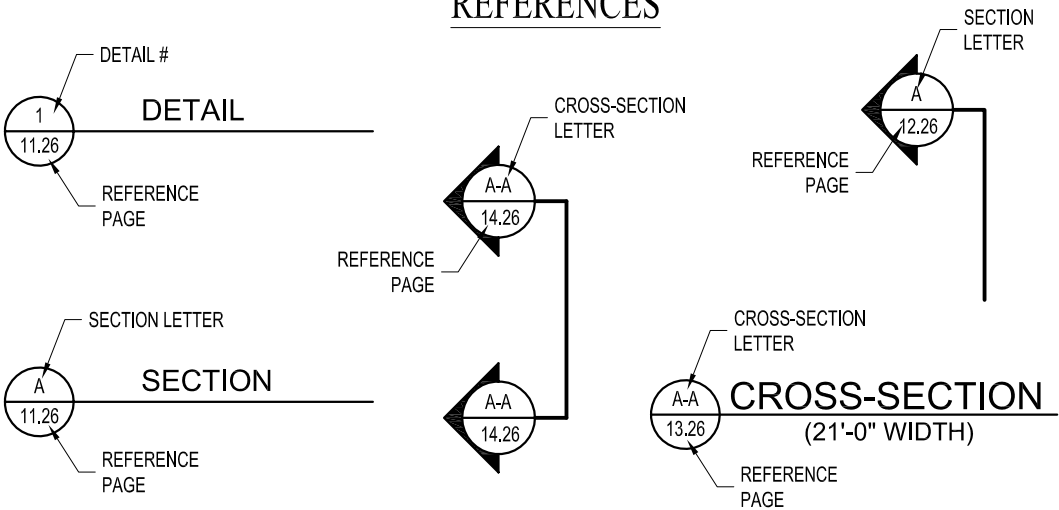


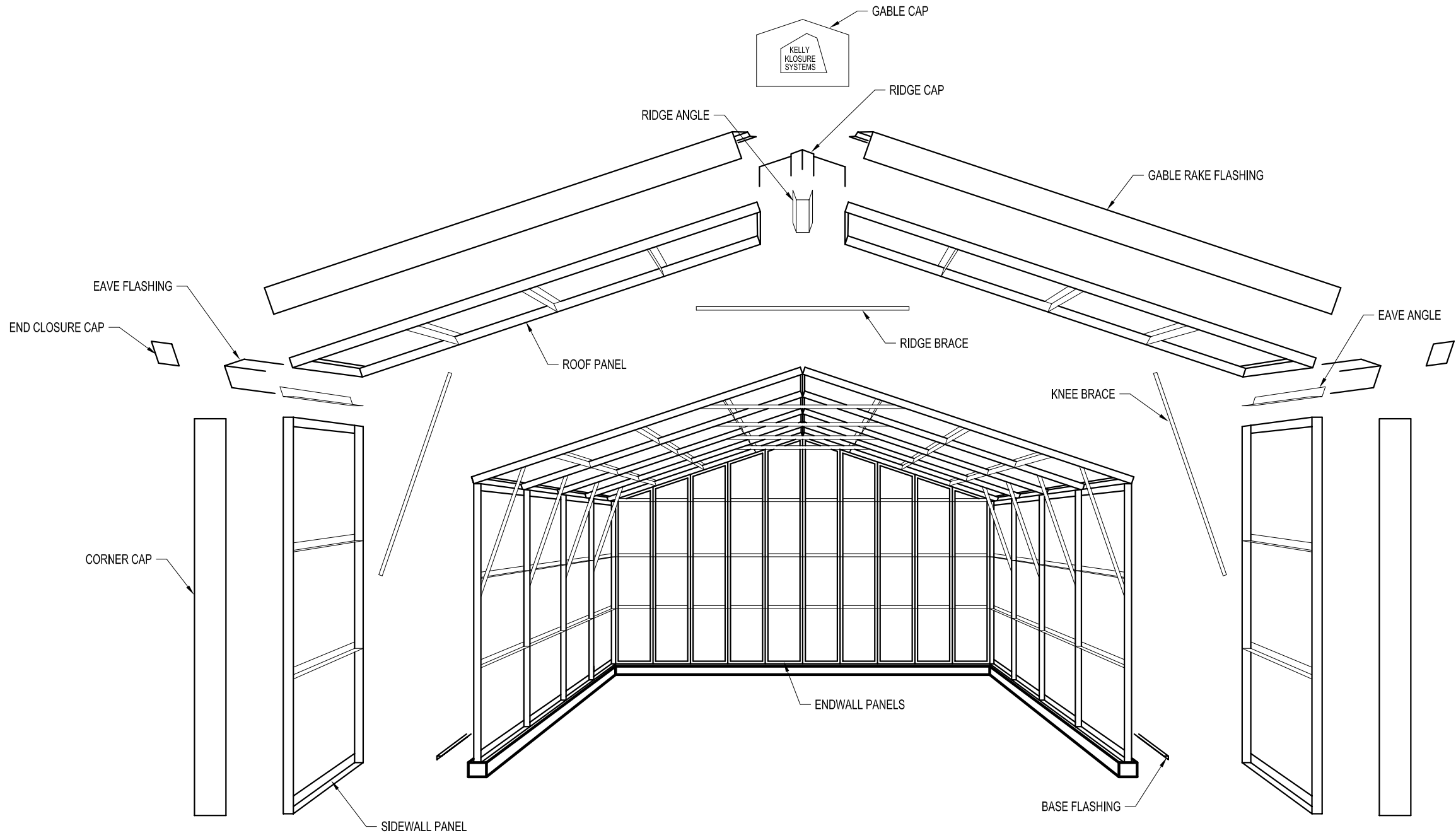
GLASS (ELEVATION)

TOOL LIST

Qty.	Description
1	TIN SNIPS
4	DRIFT PINS (1/4" - 3/4" TAPER)
2	1/2" DRIVE RATCHETS
2	9/16" SOCKET
2	3/4" SOCKET
2	1 1/16"" SOCKET
1	ELECTRIC IMPACT WRENCH 1/2" DRIVE
1	MASONRY DRILL
3	3/8" MASONRY DRILL BIT (MINIMUM LENGTH 6")
1	1/2" MASONRY DRILL BIT (MINIMUM LENGTH 10")
1	SLEDGE HAMMER
1	3 LB. HAMMER
2	C-CLAMP VISE GRIPS
2	C-CLAMP W/ 4" - 6" OPENING
1	TAG LINE ROPE - 75'-0"LONG
2	SCAFFOLDING OR STAGGING (ROLLING)
1	SCREWDRIVER W/ PHILLIPS HEAD
1	SCREWDRIVER W/ STANDARD HEAD
1	ELECTRIC DRILL
2	9/16" WRENCH
2	3/4" WRENCH
2	1 1/16" WRENCH
2	5/16" NUT DRIVER
2	3/8" NUT DRIVER
1	50'-0"LONG TAPE MEASURE
1	CHALK LINE
2	STEP LADDERS
1	CAULKING GUN
OPTIONAL EQUIPMENT	
1	FORK LIFT
1	SCISSOR LIFT
1	JLG OR CONDOR CHERRY PICKER

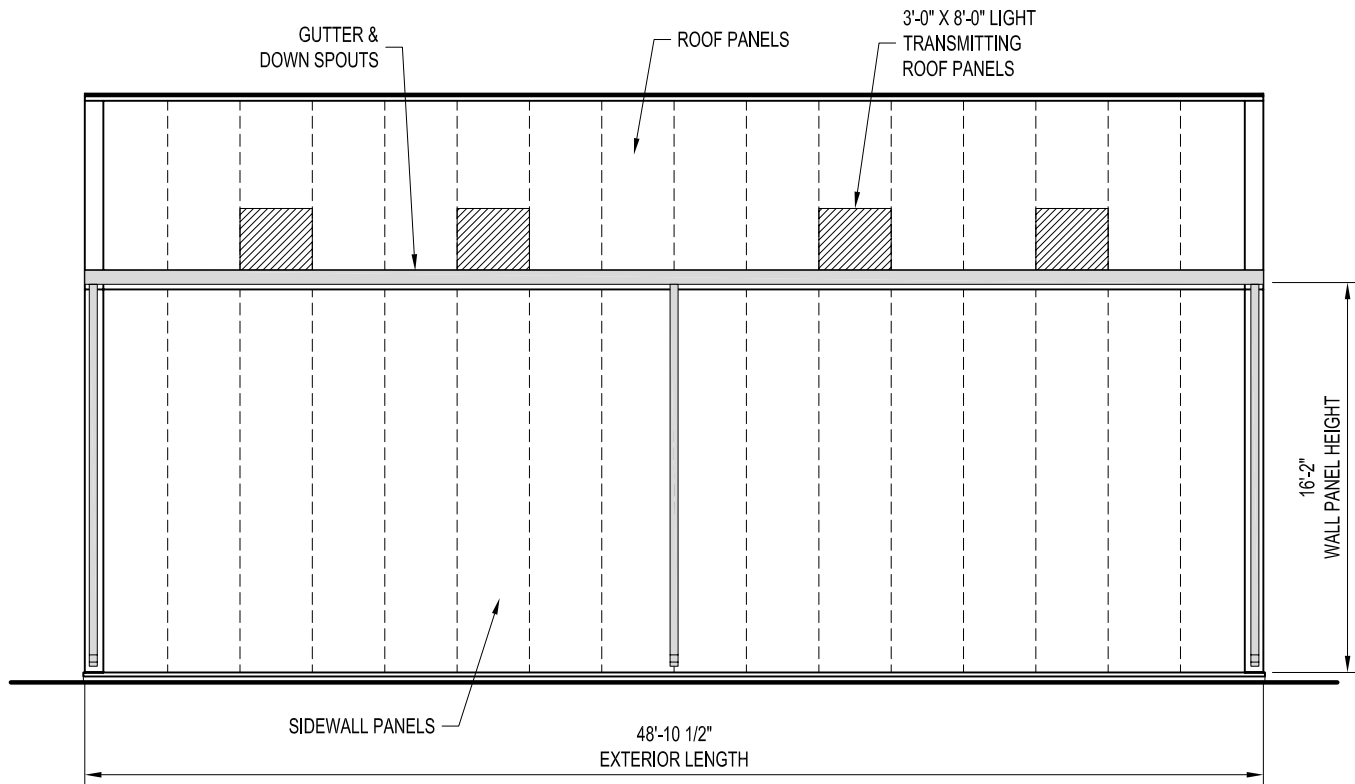
REFERENCES



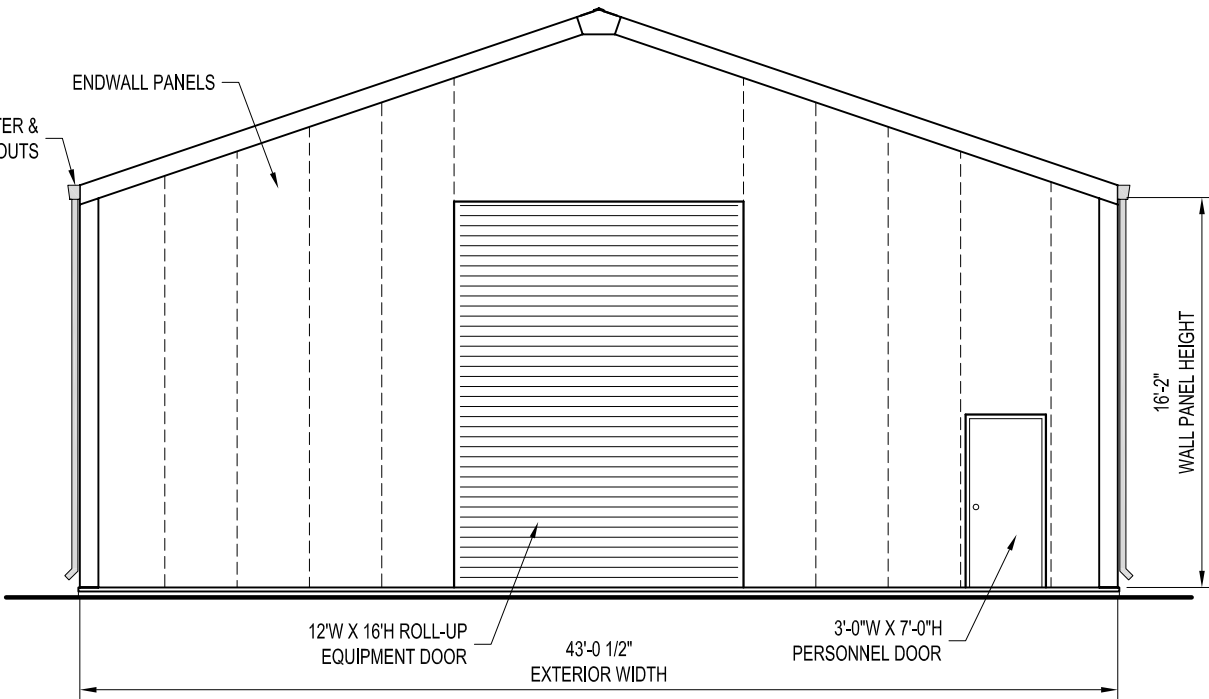


BASIC SYSTEM 2 COMPONENTS

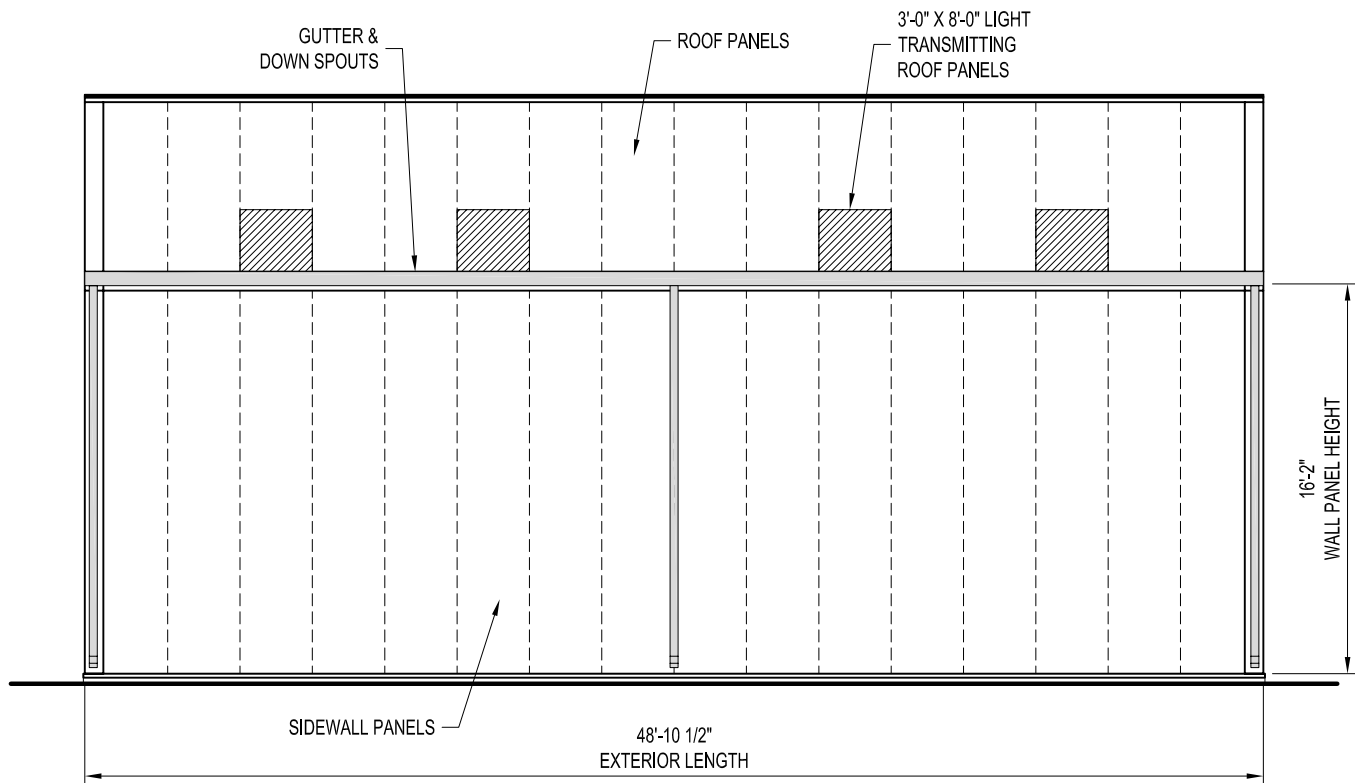
DRAWN BY: ALEX CARSTENS		PROJECT TITLE: SAMPLE ASSEMBLY DRAWINGS		PAGE TITLE: BASIC BUILDING COMPONENTS		EASY TO ASSEMBLE PANEL SYSTEMS FOR RELOCATABLE ENCLOSURES FROM WEATHER BARRIERS TO BUILDINGS	
DATE: 2/18/11	APPROVED BY: DATE:	REVISION: DATE:		SHEET 2 OF 10		Mfg. by Kelly Group, Inc. P.O. Box 1058 Fremont, NE 68026 Phone: 800-228-7230 Fax: 402-727-1363 Web: www.kellyklosure.com	
SCALE: NOT TO SCALE		BUYER:		K.K. ORDER NUMBER:		K.K. QUOTE NUMBER:	
K.K. QUOTE NUMBER:		BUYER P.O. NUMBER:		PROPRIETARY INFORMATION THIS DRAWING & THE DESIGN IT COVERS ARE THE EXCLUSIVE PROPERTY OF KELLY GROUP, INC. NO PART OF THIS DRAWING OR DESIGN MAY BE REPRODUCED OR TRANSMITTED IN ANY FORM OR BY ANY MEANS, ELECTRONIC OR MECHANICAL, INCLUDING PHOTOCOPYING, RECORDING, OR BY ANY INFORMATION STORAGE AND RETRIEVAL SYSTEM, WITHOUT THE WRITTEN PERMISSION OF KELLY GROUP, INC. OR ITS AGENTS. ANY VIOLATION OF THIS PERMISSION SHALL BE SUBJECT TO THE FULL AND EXCLUSIVE JURISDICTION OF THE COURTS OF THE STATE OF NEBRASKA.			



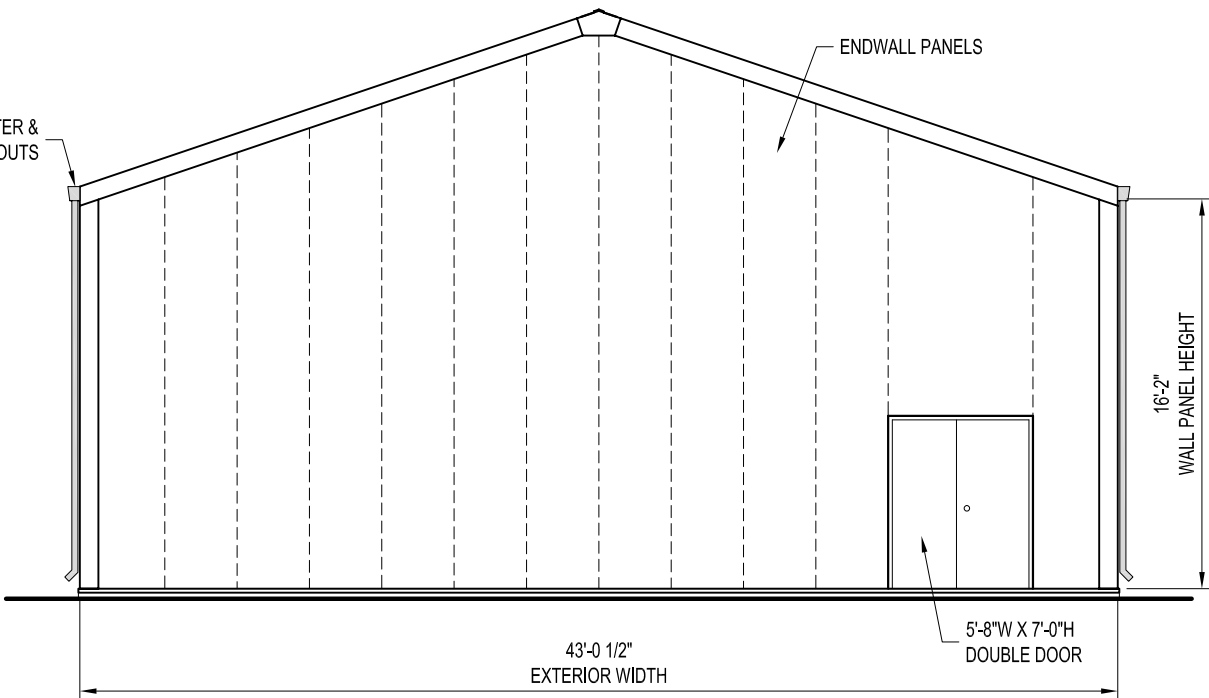
LEFT ELEVATION



FRONT ELEVATION



RIGHT ELEVATION



BACK ELEVATION

DRAWN BY: ALEX CARSTENS		DATE: 2/18/11		APPROVED BY: DATE:		REVISION: DATE:		SCALE: 1/8" = 1'-0"		K.K. QUOTE NUMBER:	
PROJECT TITLE: SAMPLE ASSEMBLY DRAWINGS				BUYER:		K.K. ORDER NUMBER:		BUYER P.O. NUMBER:		ELEVATIONS	
SHEET 3 OF 10				PROPRIETARY INFORMATION		THIS DRAWING & THE DESIGN IT COVERS ARE THE EXCLUSIVE PROPERTY OF KELLY GROUP, INC. NO PART OF THIS DRAWING OR DESIGN MAY BE REPRODUCED OR TRANSMITTED IN ANY FORM OR BY ANY MEANS, ELECTRONIC OR MECHANICAL, INCLUDING PHOTOCOPYING, RECORDING, OR BY ANY INFORMATION STORAGE AND RETRIEVAL SYSTEM, WITHOUT THE WRITTEN PERMISSION OF KELLY GROUP, INC. TO THE USER OR THEIR AGENTS. KELLY GROUP, INC. ASSUMES NO RESPONSIBILITY FOR REPRESENTATION REGARDING DRAWING SCALE & ACCURACY.		EASY TO ASSEMBLE PANEL SYSTEMS FOR RELOCATABLE ENCLOSURES FROM WEATHER BARRIERS TO BUILDINGS		Mfr. by Kelly Group, Inc. P.O. Box 1058 Fremont, NE 68026 Phone: 800-228-7230 Fax: 402-727-1363 Web: www.kellyklosure.com	

MATERIALS LIST

Qty			Description	
20	3224		Panel, 3'x22'-6"x4"	
RP-1	29LS	115	29Ga Light Stone Sht	1.1/2" Insul.
4	3224	22R	Panel, 3'x22'-6"x4"	Outer Roof
RP-2	29LS	115	29Ga Light Stone Sht	1.1/2" Insul.
8	3224	Sky	Panel, 3'x22'-6"x4"	Light Panel
RP-3	29LS	115	29Ga Light Stone Sht	1.1/2" Insul.
32	3164		Panel, 3'x16'-2"x4"	
WP-1	29LS	115	29Ga Light Stone Sht	1.1/2" Insul.
1			Gable Panel 2'-3"x16'-3.7/8"/17'-1"	
RG-1 2'-3"	29LS	115	29Ga Light Stone Sht	1.1/2" Insul.
1	LG1-16-3		Gable Panel 3'x16'-3.7/8";17'-4.1/16"	
RG-1	29LS	115	29Ga Light Stone Sht	1.1/2" Insul.
2	LG1-16-3		Gable Panel 3'x16'-3.7/8";17'-4.1/16"	
LG-1	29LS	115	29Ga Light Stone Sht	1.1/2" Insul.
1		R5O	Gable Panel 3'x9"x17'-1"/18'-4.1/4"	3'x7' P. Door (HR5O)
RG-2 3'-9"	29LS	115	29Ga Light Stone Sht	1.1/2" Insul.
1		D5O	Gable Panel 6'-0"x17'-1"/18'-4.1/4"	5'8"x7' Double Door
RG-2 6'-0"	29LS	115	29Ga Light Stone Sht	1.1/2" Insul.
2	LG2-16-3		Gable Panel 3'x17'-4.1/16";18'-4.1/4"	
LG-2	29LS	115	29Ga Light Stone Sht	1.1/2" Insul.
1	RG3-16-3		Gable Panel 3'x18'-4.1/4";19'-4.7/16"	
RG-3	29LS	115	29Ga Light Stone Sht	1.1/2" Insul.
2	LG3-16-3		Gable Panel 3'x18'-4.1/4";19'-4.7/16"	
LG-3	29LS	115	29Ga Light Stone Sht	1.1/2" Insul.
2	RG4-16-3		Gable Panel 3'x19'-4.7/16";20'-4.5/8"	
RG-4	29LS	115	29Ga Light Stone Sht	1.1/2" Insul.
2	LG4-16-3		Gable Panel 3'x19'-4.7/16";20'-4.5/8"	
LG-4	29LS	115	29Ga Light Stone Sht	1.1/2" Insul.
1	RG5-16-3		Gable Panel 3'x20'-4.5/8";21'-4.13/16"	
RG-5	29LS	115	29Ga Light Stone Sht	1.1/2" Insul.
1	LG5-16-3		Gable Panel 3'x20'-4.5/8";21'-4.13/16"	
LG-5	29LS	115	29Ga Light Stone Sht	1.1/2" Insul.
1	RG6-16-3		Gable Panel 3'x21'-4.13/16";22'-5"	
RG-6	29LS	115	29Ga Light Stone Sht	1.1/2" Insul.
1	LG6-16-3		Gable Panel 3'x21'-4.13/16";22'-5"	
LG-6	29LS	115	29Ga Light Stone Sht	1.1/2" Insul.
1	RG7-16-3		Gable Panel 3'x22'-5";23'-5.3/16"	
RG-7	29LS	115	29Ga Light Stone Sht	1.1/2" Insul.
1	LG7-16-3		Gable Panel 3'x22'-5";23'-5.3/16"	
LG-7	29LS	115	29Ga Light Stone Sht	1.1/2" Insul.
1	RG5-16-3	C8	Gable Panel 3'x20'-4.5/8";21'-4.13/16"	8"Channel
RG-5J	29LS	115	29Ga Light Stone Sht	1.1/2" Insul.
1	LG5-16-3	C8	Gable Panel 3'x20'-4.5/8";21'-4.13/16"	8"Channel
LG-5J	29LS	115	29Ga Light Stone Sht	1.1/2" Insul.
1			Middle Gable 12'x5'-4.13/16"/7'-5.3/16"	
MG-1	29LS	115	29Ga Light Stone Sht	1.1/2" Insul.
4	0226	A25	Erection Angle, 22'-6"	1.2. 1/2x2.1/2x3/16
GEA			22'-5.1/2"L	
4	0162	A25	Erection Angle, 16'-2"	1.2. 1/2x2.1/2x3/16
CEA			16'-1.1/2"L	
Qty			Description	
1			Set Assembly Drawings (w/MSDS Sheets)	
2	Bottle		Touch Up Paint - Trim & Sheets	Light Stone
2	Bottle		Touch Up Paint - Trim	Hawaiian Blue
1	Pint		Touch Up Paint - Panel Frames	Red Primer
1	Pint		Touch Up Paint - Door	Mfg. Door Gray
1			S. Parker Door Knob	
1			S. Parker Door Closure	
34			Outer Closure Strip	Imperial Rib
8	Rolls		1/2" x 1" Base Seal - 25Ft	
3	Tubes		Silco Caulking - Clear	
Building Bolts				
960			1/2"x1" Bolt, Zinc Plated	
960			1/2" Nut, Zinc Plated	
1	Set		Picking Angles (2-Large/2-Small)	
160			1/2" Washer	
S2 Bracing				
16	0015		Standard 3' S2 Ridge Angle	Formed Plate
32	0025		Standard 3' S2 Eave Angle	Formed Plate
192			1/2"x1" Bolt, Zinc Plated	
192			1/2" Nut, Zinc Plated	
14	42RB		S2 Ridge Brace	12'-3.11/16"L (L4x4)
26	42KB3		S2 Knee Brace	8'-6"L (L4x3)
94			3/4" x 2" A325 Bolt, Plain	
94			3/4" A563 Nut, Plain	
Cookson Equipment Door 12 Wide x 16 High				
1			Cookson Roll-Up Equipment Door w/Hdwe	
5			Equipment Door Flashing	Hawaiian Blue
50			#4 Tek Screw	Hawaiian Blue
50			1/4" x 1.1/4" Bolt, Zinc Plated	
50			1/4" Nut, Zinc Plated	
44	Lf.		2" Brush Weatherstripping	
44	Lf.		Aluminum Retainer 1" 45 Degree	
88			#5 Tek Screw	
Building Flashing				
5			10' Formed Ridge Cap	Light Stone
18			10' Corner Caps	Hawaiian Blue
10			10' Eave Flashing	Hawaiian Blue
20			10' Base Flashing	Light Stone
4			Base Flashing Corners	Light Stone
4			Closure Cap	Hawaiian Blue
2			Gable End Cap	Hawaiian Blue
16			Light Lap Cap	Light Stone
150			#8-18 x 1/2 T-2 Screw	Light Stone
500			#8-18 x 1/2 T-2 Screw	Hawaiian Blue
8	10'		Open ended gutter sections	
2	5'		Gutter section w/ Right endap & outlet	
2	5'		Gutter section w/ Left endap & outlet	
4	16'		Box Downspouts	
16			Downspout support bracket	
16	5'		Gutter support Channel	

2) FOUNDATIONS

- A) RECOMMENDED FOUNDATION SIZE IS GIVEN ON THE FOUNDATION PLAN VIEW PAGE OF THIS SET.
- a) OUTSIDE DIMENSIONS AS SHOWN ARE REQUIRED TO ACCEPT BUILDING BASE FLASHING AS SUPPLIED. A TOLERANCE OF + OR - 1/4" IS ACCEPTABLE. THE SLAB SHOULD BE LEVEL AROUND PERIMETER OF FOUNDATION WITH A TOLERANCE OF + OR - 1/4". ANY VARIANCE COULD CREATE A LEAKAGE PROBLEM AT BASE OF BUILDING.
 - b) USERS ARE TO ESTABLISH SIZE AND REINFORCEMENT REQUIREMENTS FOR FOUNDATIONS TO ACCOMMODATE SITE SOIL CONDITIONS AND LOCAL FROST DEPTH.
 - c) BUILDING ANCHOR BOLT REACTIONS ARE AVAILABLE UPON REQUEST.

B) ANCHOR BOLTS

- a) PRESETTING OF ANCHOR BOLTS IS NOT REQUIRED. ANCHOR BOLTS WILL BE INSTALLED AS THE BUILDING IS ERECTED. KELLY RECOMMENDS THE *SIMPSON TITEN HD SCREW ANCHOR* AS SHOWN ON THE BUILDING BASE SECTION ON THE BASE SECTIONS PAGE.
- b) CONCRETE ANCHORS WILL BE SUPPLIED WITH THE BUILDING SHIPMENT.

3) PANEL COMPONENTS AND FINISHES

- A) PANEL FRAMES & STRUCTURAL STEEL COMPONENTS
 - a) ONE COAT, CORROSION RESISTANT, WATER REDUCIBLE, ACRYLIC ALKYD EMULSION PRIMER
- B) EXTERIOR STEEL SIDING AND ROOFING
 - a) 29 GA. 3/4" RIBBED "IMPERIAL RIB", DOES NOT REQUIRE SEAL TAPE OR STITCH SCREWS AT OVERLAPS
 - b) SIDING AND ROOFING TO BE GALVALUME COATED WITH PRIMER AND SILICONE MODIFIED POLYESTER PAINT FINISH
- C) FACTORY INSTALLED INSULATION
 - a) INSULATION TO BE RIGID, CLOSED CELL, POLYISOCYANURATE WITH FOIL FACING
 - b) WALLS: 1.1/2" THICK (R-11)
 - c) ROOF: 1.1/2" THICK (R-11)

D) FACTORY INSTALLED STEEL INSULATION LINER

- a) NONE

4) GUTTER SYSTEMS

- A) GUTTER & DOWNSPOUTS ARE SUPPLIED BY KELLY AS SHOWN ON THE BUILDING ELEVATIONS (PAGE 3 OF 10).

NOTES:

IN COLD CLIMATES WHERE ICE AND SNOW BUILD UP IS A PROBLEM, KELLY RECOMMENDS HEAT TRACE TO PREVENT ICE BUILD UP IN THE GUTTERS AND SNOW GUARDS / BLOCKS TO PREVENT SNOW FROM SLIDING OFF THE ROOF AND DAMAGING THE GUTTERS. THIS MATERIAL, IF REQUIRED, IS TO BE SUPPLIED AND INSTALLED BY OTHERS.

5) PERSONNEL AND EQUIPMENT DOORS

- A) 3'W X 7'H PERSONNEL DOOR FACTORY INSTALLED IN A 3'-9" WIDE WALL PANEL,
TYPE "A" SHOWN ON PLAN VIEW
- a) DOOR FRAME: 16 GA. STEEL, PRIMED AND FINISH PAINTED
 - b) DOOR LEAF: 18 GA. STEEL, HONEYCOMB CORE, PRIMED AND FINISH PAINTED
 - c) *ENTRY LOCK: STANDARD LOCKSET, S.PARKER B9160 SERIES, STAINLESS STEEL
 - d) HINGES: (3) 4.5" BALL BEARING, STANLEY FBB179, US26D FINISH
 - e) *CLOSER: STANDARD, S.PARKER 954, ALUMINUM FINISH
 - f) DOOR SWEEP: STANDARD, MD DCV134, ALUMINUM FINISH
 - g) WEATHER STRIPPING: NONE

- A) 5'-8" W X 7' H PERSONNEL DOOR FACTORY INSTALLED IN A 6'-0" WIDE WALL PANEL,
TYPE "B" SHOWN ON PLAN VIEW
- | | | |
|----|--------------------|--|
| a) | DOOR FRAME: | 16 GA. STEEL, PRIMED AND FINISH PAINTED |
| b) | DOOR LEAF: | 18 GA. STEEL, HONEYCOMB CORE, PRIMED AND FINISH PAINTED |
| c) | *ENTRY LOCK: | STANDARD LOCKSET, S.PARKER B9160 SERIES, STAINLESS STEEL |
| d) | HINGES: | (3) 4.5" BALL BEARING, STANLEY FBB179, US26D FINISH |
| e) | *CLOSER: | STANDARD, S.PARKER 954, ALUMINUM FINISH |
| f) | DOOR SWEEP: | STANDARD, MD DCV134, ALUMINUM FINISH |
| g) | WEATHER STRIPPING: | NONE (OR) STANDARD, REESE 815C, ALUMINUM FINISH |
| h) | FLUSH BOLTS: | INACTIVE LEAF ONLY, STANDARD, IVES 458B, US26D FINISH |

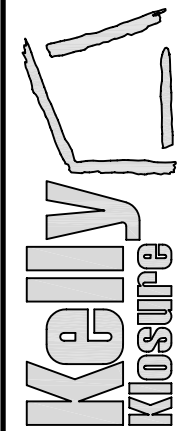
NOTES:

1. (*) THESE ITEMS ARE FIELD INSTALLED TO PREVENT DAMAGE DURING SHIPMENT AND ERECTION
2. CHANGES FROM LISTED HARDWARE MAY REQUIRE AN ADDITIONAL CHARGE.

- B) ROLL-UP EQUIPMENT DOORS ARE AS NOTED ON THE PLAN VIEW PAGE DOOR SCHEDULE.

EQUIPMENT DOORS ARE SUPPLIED ONLY. INSTALLATION AND SERVICE IS THE RESPONSIBILITY OF THE END USER. KELLY KLOSURE DOES NOT HAVE EXPERIENCE IN INSTALLATION OF EQUIPMENT DOORS AND THEREFORE CANNOT PROVIDE ASSISTANCE EXCEPT IN WARRANTY, SHIPPING SHORTAGES OR SHIPPING DAMAGE RELATED ISSUES.

**EASY TO ASSEMBLE PANEL
SYSTEMS FOR RELOCATABLE
ENCLOSURES FROM WEATHER
BARRIERS TO BUILDINGS**



Mfrgr. by Kelly Group, Inc.
P.O. Box 1058 Fremont, NE 68026
Phone: 800-228-7230 Fax: 402-727-

MATERIALS LIST

SHEET 4 OF 10

PROPRIETARY INFORMATION

THIS DRAWING & THE DESIGN IT COVERS ARE THE EXCLUSIVE PROPERTY OF KELLY GROUP, INC. OF NE. THEY ARE PROVIDED ONLY ON THE USER'S EXPRESS AGREEMENT THAT THEY WILL NOT BE REPRODUCED, COPIED, LOANED, EXHIBITED, CHANGED OR OTHERWISE USED EXCEPT IN THE LIMITED WAY PERMITTED BY CONSENT OF KELLY GROUP, INC. OF NE. TO THE USER OR THEIR AGENTS. KELLY GROUP, INC. OF NE. MAKES NO REPRESENTATION REGARDING DRAWING SALE & ACCURACY

PROJECT TITLE:
SAMPLE ASSEMBLY DRAWINGS

BUYER:

K.K. QUOTE NUMBER:

SCALE: NOT TO SCALE

K.K. ORDER NUMBER:

BUYER P.O. NUMBER:

DRAWN BY:
ALEX CARSTENS

DATE: 2/18/11

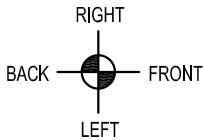
APPROVED BY:

DATE:

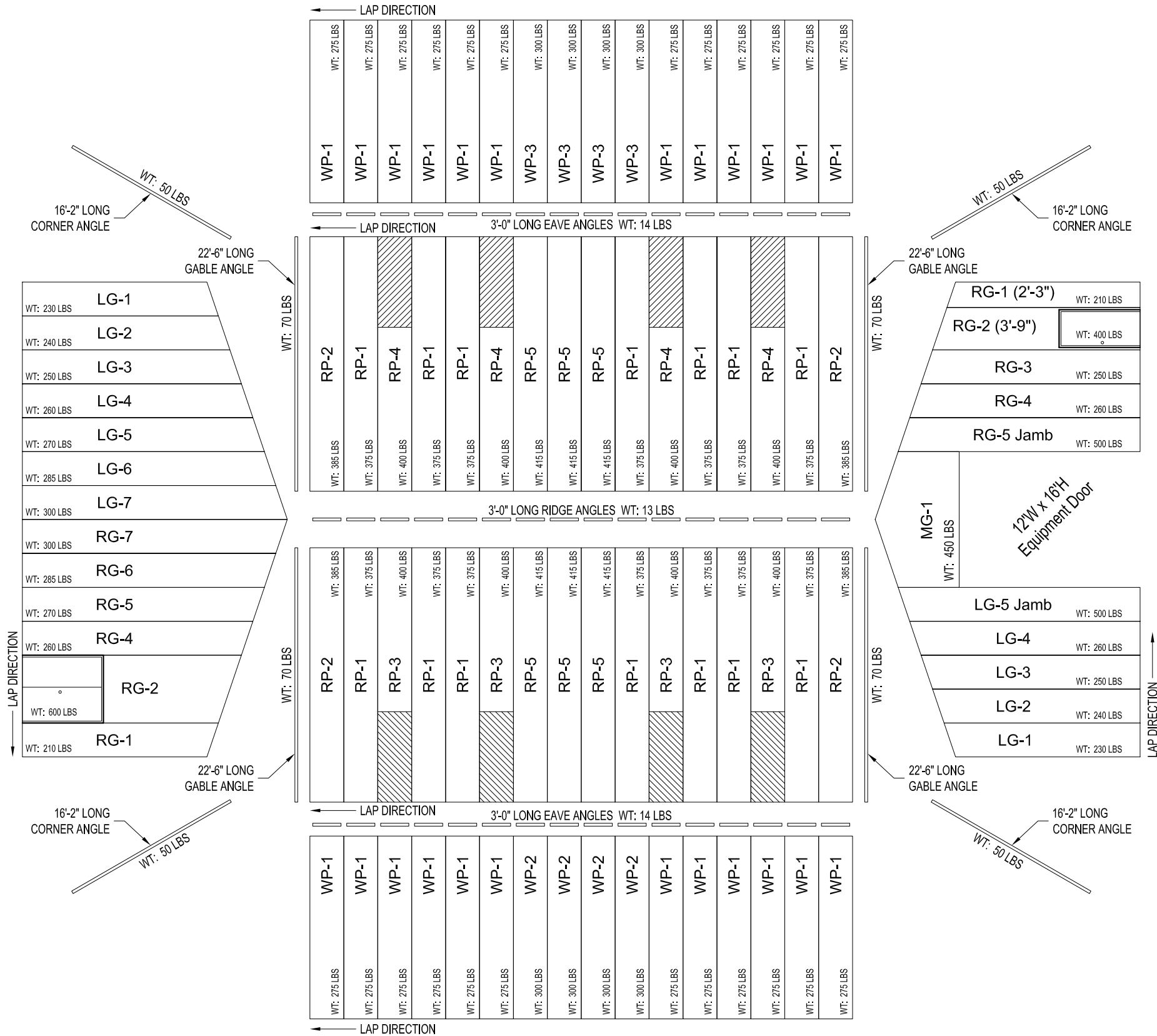
REVISION:

SCALE: NOT TO SCALE

K.K. QUOTE NUMBER:



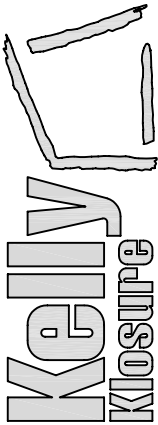
START ASSEMBLY AT THIS END & WORK IN THIS DIRECTION



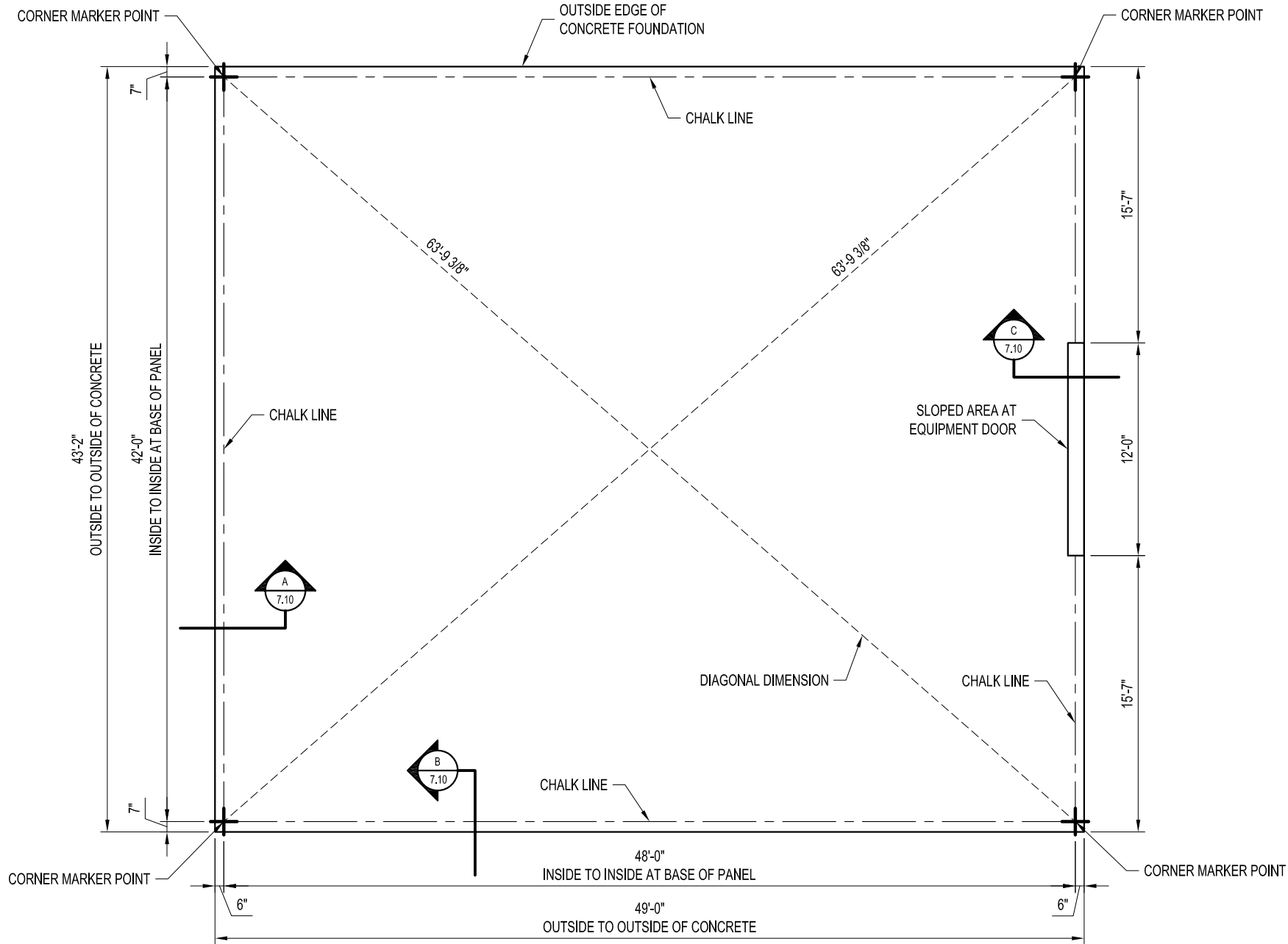
BUILDING LAYFLAT

DRAWN BY: ALEX CARSTENS		PROJECT TITLE: SAMPLE ASSEMBLY DRAWINGS		PAGE TITLE: BUILDING LAYFLAT	
DATE: 2/18/11	APPROVED BY:		SHEET 5 OF 10		
REVISION:		PROPRIETARY INFORMATION			
DATE:	BUYER:		THIS DRAWING & THE DESIGN IT COVERS ARE THE EXCLUSIVE PROPERTY OF KELLY GROUP, INC. NO PART OF THIS DRAWING OR THE DESIGN IT COVERS MAY BE REPRODUCED OR TRANSMITTED IN ANY FORM OR BY ANY MEANS, ELECTRONIC OR MECHANICAL, INCLUDING PHOTOCOPYING, RECORDING, OR BY ANY INFORMATION STORAGE AND RETRIEVAL SYSTEM, WITHOUT THE WRITTEN PERMISSION OF KELLY GROUP, INC. THE USER OF THIS DRAWING OR THE DESIGN IT COVERS SHALL BE RESPONSIBLE FOR OBTAINING ALL NECESSARY PERMITS AND APPROVALS FROM THE APPROPRIATE AGENCIES AND AUTHORITIES. KELLY GROUP, INC. MAKES NO REPRESENTATION REGARDING DRAWING SCALE & ACCURACY.		
SCALE: 3/32" = 1'-0"	BUYER P.O. NUMBER:		Mfr. by Kelly Group, Inc.		
K.K. QUOTE NUMBER:	K.K. ORDER NUMBER:		P.O. Box 1058 Fremont, NE 68026		
				Phone: 800-228-7230 Fax: 402-727-1363 Web: www.kellyklosure.com	

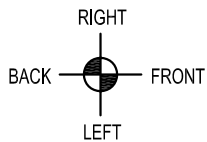
EASY TO ASSEMBLE PANEL
SYSTEMS FOR RELOCATABLE
ENCLOSURES FROM WEATHER
BARRIERS TO BUILDINGS



Mfr. by Kelly Group, Inc.
P.O. Box 1058 Fremont, NE 68026
Phone: 800-228-7230 Fax: 402-727-1363 Web: www.kellyklosure.com



FOUNDATION PREPARATION PLAN VIEW



STEP #1 - MARKER POINTS

USING THE DIMENSIONS AS SHOWN, MARK THE FOUR INSIDE BUILDING CORNER DIMENSIONS.

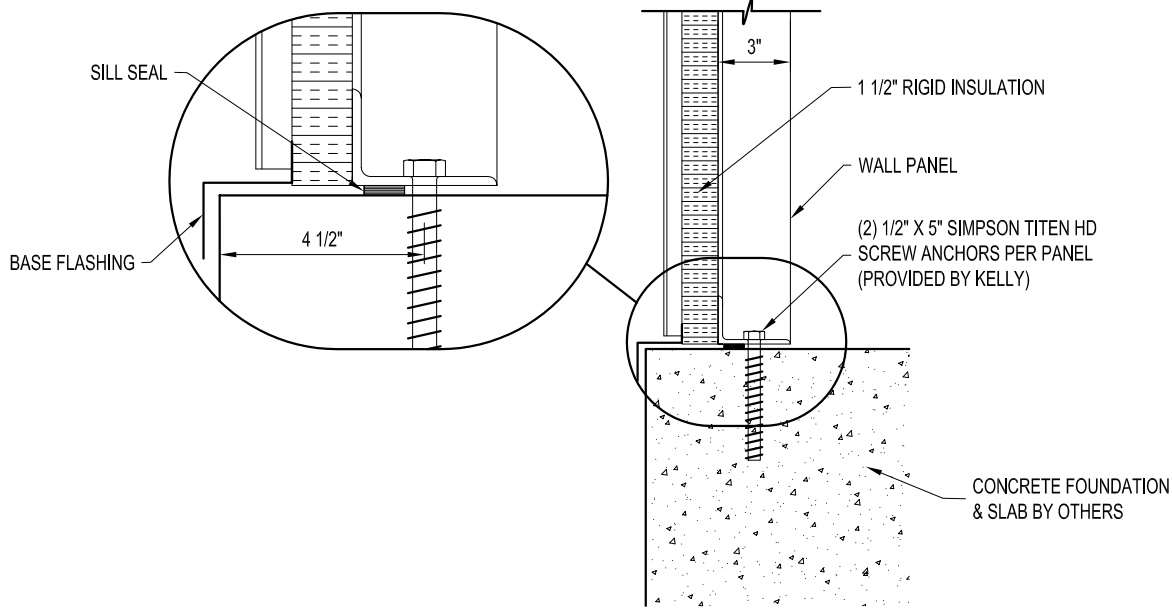
STEP #2 - DIAGONAL MEASUREMENT

MEASURE THE DIAGONALS (DIAGONAL MEASUREMENTS MUST BE EQUAL), CORRECT IF NECESSARY BY SHIFTING THE CORNERS WITHOUT CHANGING THE LENGTH OR WIDTH DIMENSIONS.

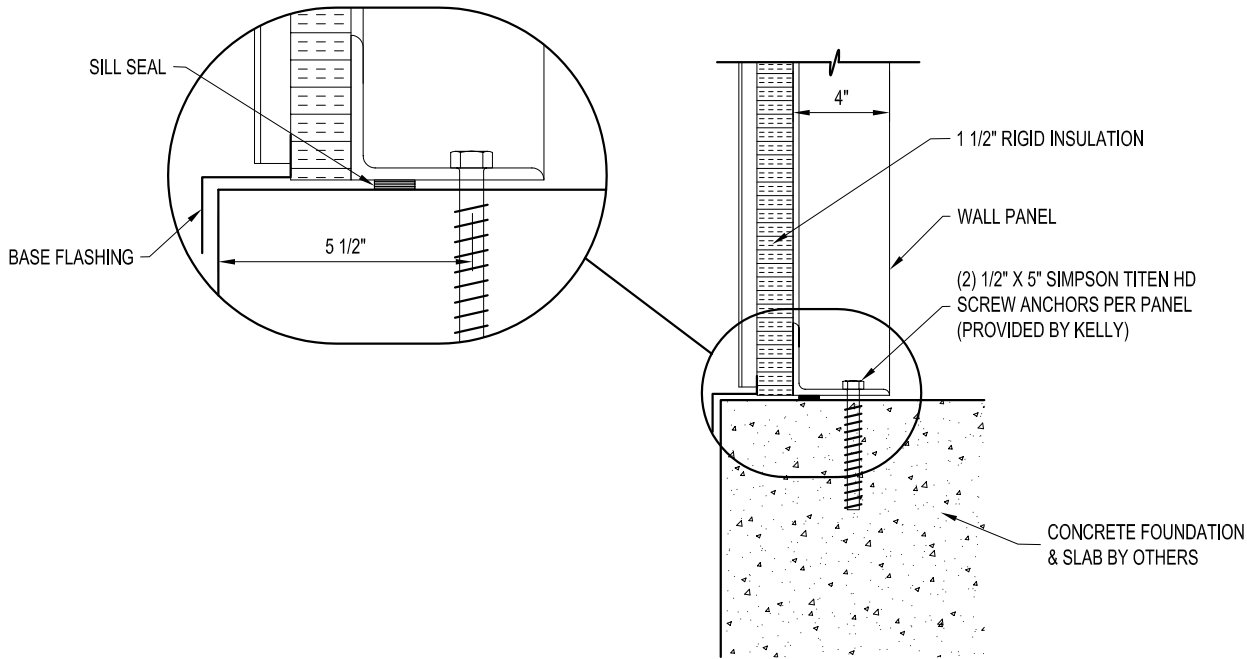
STEP #3 - CHALK LINE

USING THE SQUARED MARKER POINTS, SNAP A CHALK LINE AS SHOWN. (THE CHALK LINE SIGNIFIES THE INSIDE BUILDING DIMENSIONS)

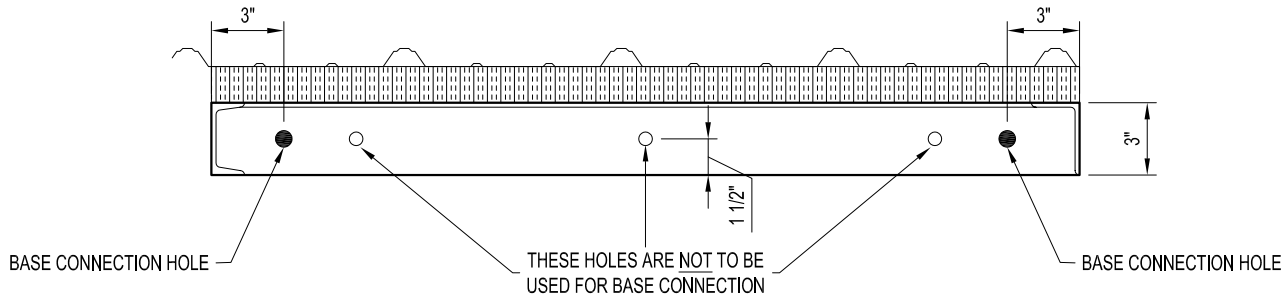
PROJECT TITLE: SAMPLE ASSEMBLY DRAWINGS		PAGE TITLE: FOUNDATION PREPARATION PLAN VIEW	
DRAWN BY: ALEX CARSTENS		SHEET 6 OF 10	
DATE: 2/18/11		PROPRIETARY INFORMATION	
APPROVED BY:		THIS DRAWING & THE DESIGN IT COVERS ARE THE EXCLUSIVE PROPERTY OF KELLY GROUP, INC. NO PART OF THIS DRAWING OR THE INFORMATION CONTAINED HEREIN IS TO BE REPRODUCED OR TRANSMITTED IN ANY FORM OR BY ANY MEANS, ELECTRONIC OR MECHANICAL, INCLUDING PHOTOCOPYING, RECORDING, OR BY ANY INFORMATION STORAGE AND RETRIEVAL SYSTEM, WITHOUT THE WRITTEN PERMISSION OF KELLY GROUP, INC. OR ITS AGENTS. ANY REUSE OF THIS DRAWING OR THE INFORMATION CONTAINED HEREIN WITHOUT THE WRITTEN PERMISSION OF KELLY GROUP, INC. OR ITS AGENTS IS STRICTLY PROHIBITED.	
REVISION:		Mfr. by Kelly Group, Inc.	
DATE:		P.O. Box 1058 Fremont, NE 68026	
SCALE: 1/8" = 1'-0"		Phone: 800-228-7230 Fax: 402-727-1363 Web: www.kellyklosure.com	
K.K. QUOTE NUMBER:		EASY TO ASSEMBLE PANEL SYSTEMS FOR RELOCATABLE ENCLOSURES FROM WEATHER BARRIERS TO BUILDINGS	
BUYER:		K.K. ORDER NUMBER:	
BUYER P.O. NUMBER:			



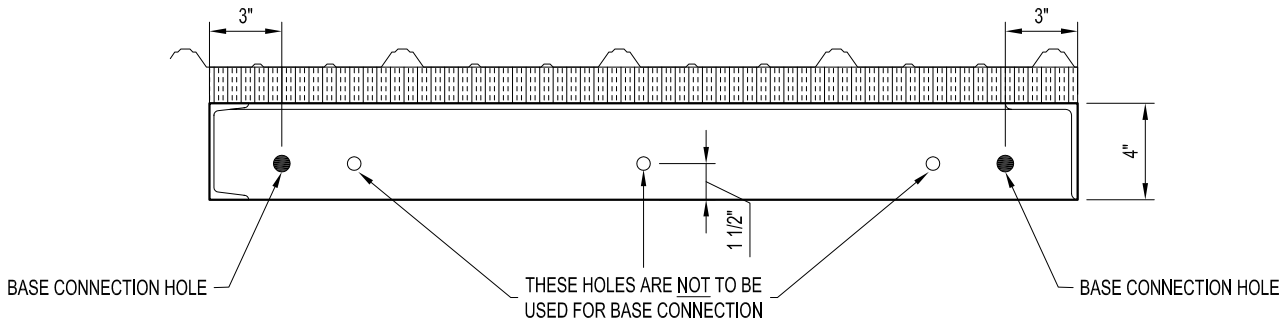
A ENDWALL PANEL BASE SECTION
SCALE: 1 1/2" = 1'-0"



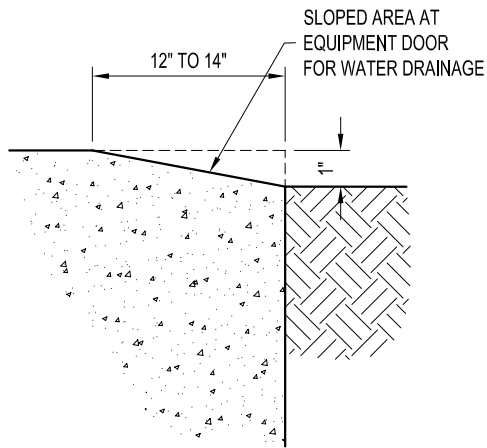
B SIDEWALL PANEL BASE SECTION
SCALE: 1 1/2" = 1'-0"



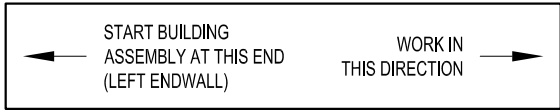
ENDWALL BASE CONNECTION SPACING DETAIL
SCALE: 1 1/2" = 1'-0"



SIDEWALL BASE CONNECTION SPACING DETAIL
SCALE: 1 1/2" = 1'-0"



C EQUIPMENT DOOR RAMP SECTION
SCALE: 1 1/2" = 1'-0"



WALL PANELS

WALL PANELS

1/2" X 1" BOLT W/ NUT

#14 X 7/8" T-1 SCREW
W/ WASHER

BATT INSULATION
(IF REQUIRED)

CORNER ANGLE

WALL PANELS

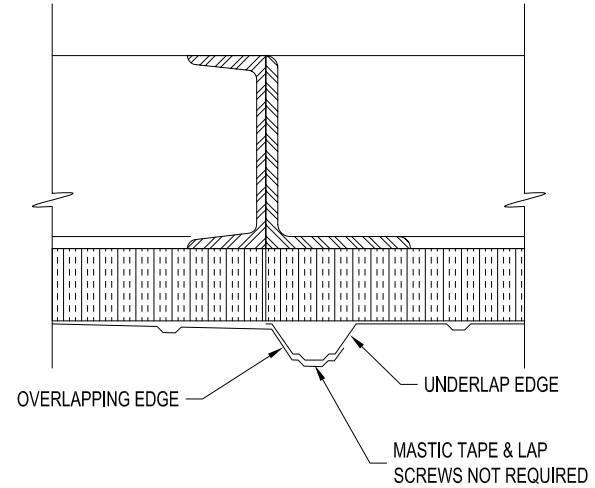
1/2" X 1" BOLT W/ NUT

#14 X 7/8" T-1 SCREW
W/ WASHER


WALL PANELS

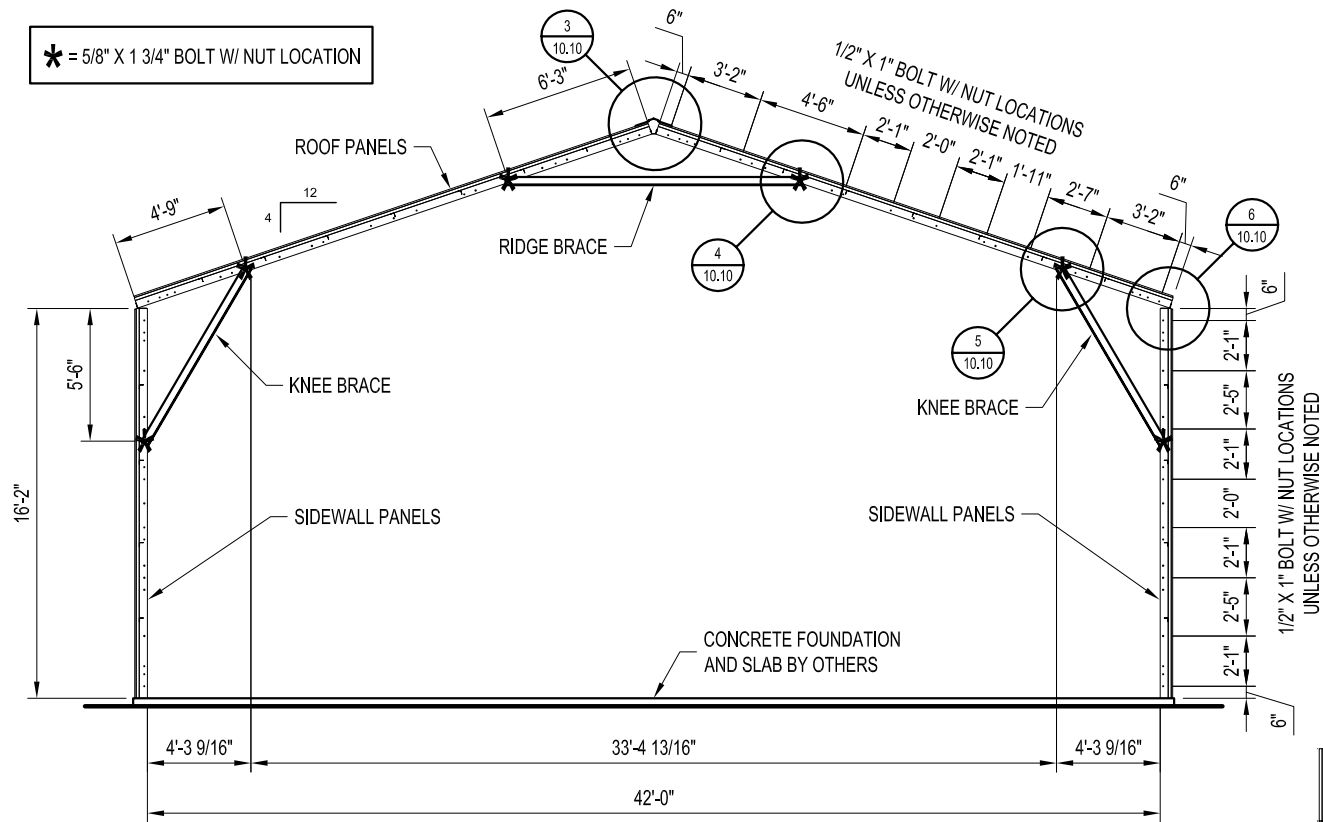
2 TYPICAL CORNER CONNECTION DETAIL
8.10 SCALE: 1 1/2" = 1'-0"

DOOR SCHEDULE	
MARK NO.	DESCRIPTION
(A)	3'-0"W X 7'-0"H PERSONNEL DOOR (SWING AS SHOWN ON PLAN VIEW)
(B)	5'-8"W X 7'-0"H DOUBLE DOOR (SWING AS SHOWN ON PLAN VIEW)
(C)	12'W X 16'H COOKSON BRAND INSULATED EQUIPMENT DOOR HEAVY-DUTY SLAT STYLE W/ MANUAL CHAIN OPERATOR

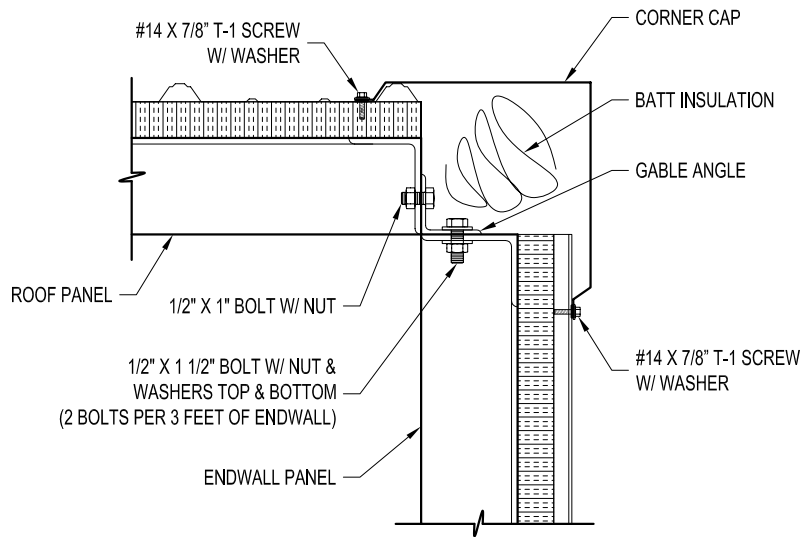


OVERLAP DETAIL

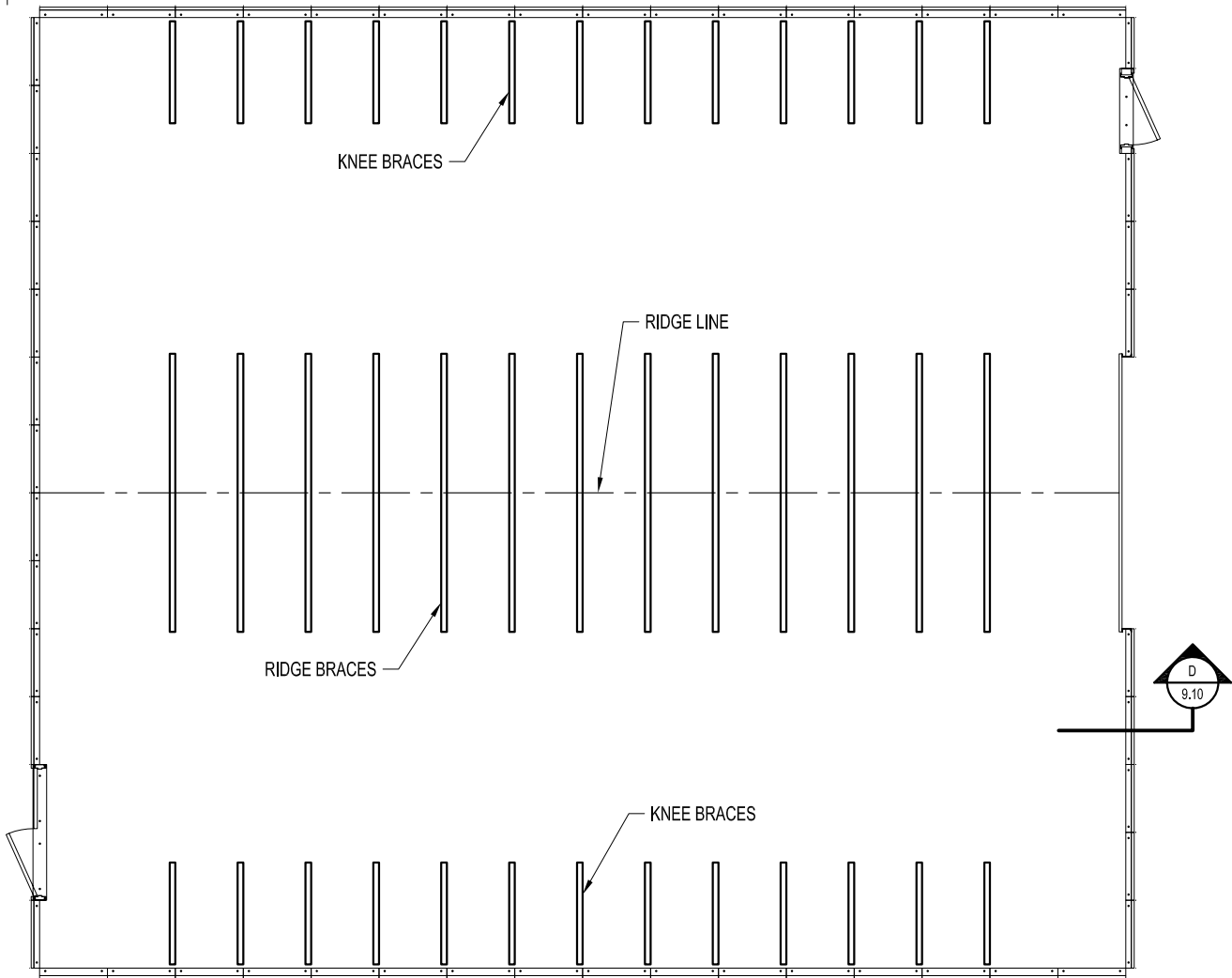
DRAWN BY: ALEX CARSTENS		PROJECT TITLE: SAMPLE ASSEMBLY DRAWINGS		PAGE TITLE: PLAN VIEW		<div><h1>Kelly Klosure</h1><p>EASY TO ASSEMBLE PANEL SYSTEMS FOR RELOCATABLE ENCLOSURES FROM WEATHER BARRIERS TO BUILDINGS</p><p>Mfr. by Kelly Group, Inc. P.O. Box 1058 Fremont, NE 68026 Phone: 800-228-7230 Fax: 402-727-1363 Web: www.kellyklosure.com</p></div>
DATE: 2/18/11				SHEET 8 OF 10		
APPROVED BY:						
DATE:						
REVISION:						
DATE:						
SCALE: 1/8" = 1'-0"		BUYER:		PROPRIETARY INFORMATION		
K.K. QUOTE NUMBER:		K.K. ORDER NUMBER:		THIS DRAWING & THE ASSOCIATED COORDINATES ARE THE PROPERTY OF KELLY GROUP, INC. OF NE. THEY ARE PROVIDED ONLY ON THE USER'S EXPRESS AGREEMENT THAT THEY WILL NOT BE REPRODUCED OR TRANSMITTED IN ANY FORM OR BY ANY MEANS, ELECTRONIC OR MECHANICAL, WITHOUT THE EXPRESS WRITTEN PERMISSION OF KELLY GROUP, INC. OF NE. TO THE USER OR THEIR AGENTS. KELLY GROUP, INC. OF NE. MAKES NO REPRESENTATION REGARDING DRAWING SCALE & ACCURACY.		
K.K. QUOTE NUMBER:		BUYER P.O. NUMBER:				



CROSS-SECTION
(42'W X 16'-2"H)



D GABLE RAKE CONNECTION DETAIL
9.10 SCALE: 1 1/2" = 1'-0"



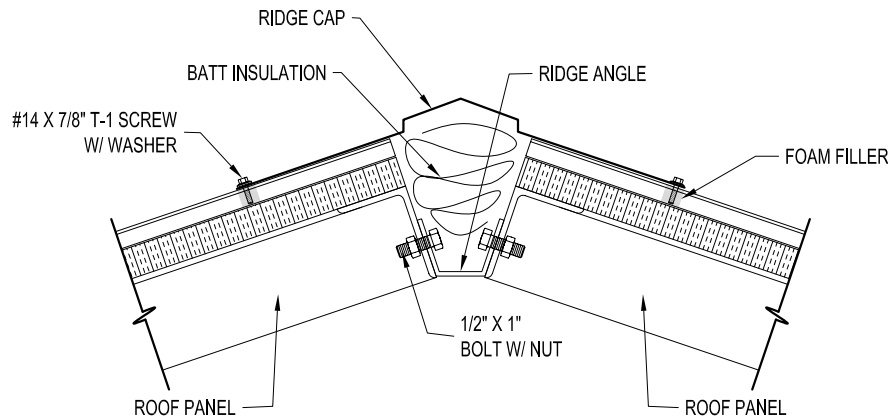
BRACING LOCATIONS PLAN VIEW
(NOT TO SCALE)

PROJECT TITLE: SAMPLE ASSEMBLY DRAWINGS		PAGE TITLE: CROSS-SECTION	
DRAWN BY: ALEX CARSTENS		SHEET 9 OF 10	
DATE: 2/18/11		PROPRIETARY INFORMATION THIS DRAWING AND THE DESIGN IT COVERS ARE THE EXCLUSIVE PROPERTY OF KELLY GROUP, INC. NO PART OF THIS DRAWING OR THE DESIGN IT COVERS MAY BE REPRODUCED OR TRANSMITTED IN ANY FORM OR BY ANY MEANS, ELECTRONIC OR MECHANICAL, INCLUDING PHOTOCOPYING, RECORDING, OR BY ANY INFORMATION STORAGE AND RETRIEVAL SYSTEM, WITHOUT THE WRITTEN PERMISSION OF KELLY GROUP, INC. OR ITS AGENTS. ANY REUSE OF THIS DRAWING OR THE DESIGN IT COVERS WITHOUT THE WRITTEN PERMISSION OF KELLY GROUP, INC. OR ITS AGENTS IS STRICTLY PROHIBITED. KELLY GROUP, INC. AND ITS AGENTS ACCEPT NO LIABILITY FOR ANY ERRORS OR OMISSIONS IN THIS DRAWING OR THE DESIGN IT COVERS.	
APPROVED BY:		BUYER:	
DATE:		K.K. ORDER NUMBER:	
REVISION:		BUYER P.O. NUMBER:	
DATE:		SCALE: 1/8" = 1'-0"	
K.K. QUOTE NUMBER:		Web: www.kellyklosure.com	

EASY TO ASSEMBLE PANEL
SYSTEMS FOR RELOCATABLE
ENCLOSURES FROM WEATHER
BARRIERS TO BUILDINGS

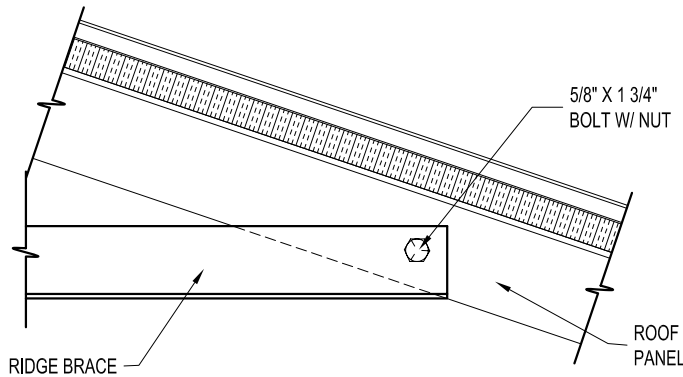
Kelly Klosure

Mfg. by Kelly Group, Inc.
P.O. Box 1058 Fremont, NE 68026
Phone: 800-228-7230 Fax: 402-727-1363



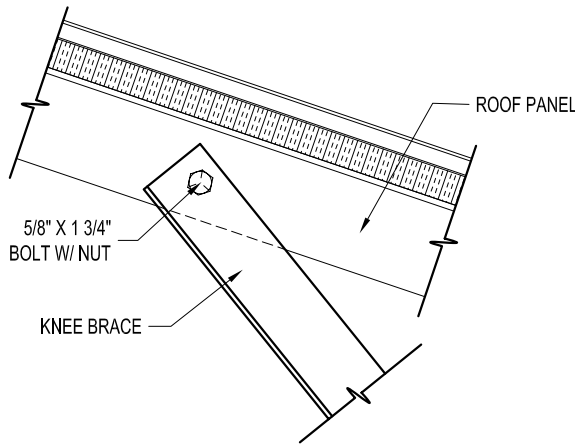
3
9.10

TYPICAL RIDGE DETAIL



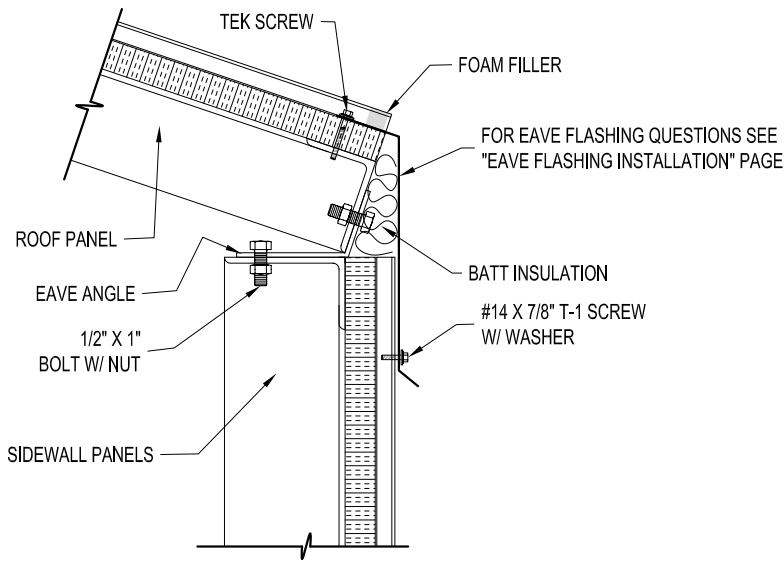
4
9.10

TYPICAL RIDGE BRACE CONNECTION DETAIL



5
9.10

TYPICAL KNEE BRACE CONNECTION DETAIL



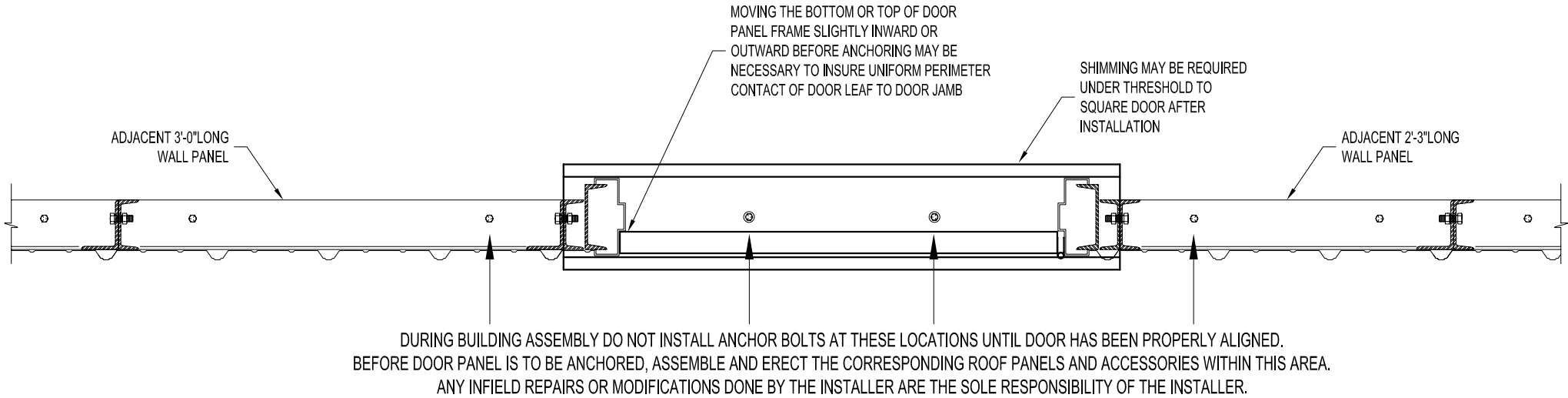
6
9.10

TYPICAL EAVE CONNECTION DETAIL

DRAWN BY: ALEX CARSTENS		PROJECT TITLE: SAMPLE ASSEMBLY DRAWINGS		PAGE TITLE: CROSS-SECTION DETAILS		EASY TO ASSEMBLE PANEL SYSTEMS FOR RELOCATABLE ENCLOSURES FROM WEATHER BARRIERS TO BUILDINGS	
DATE: 2/18/11	APPROVED BY: DATE:	BUYER:		SHEET 10 OF 10		Mfg. by Kelly Group, Inc. P.O. Box 1058 Fremont, NE 68026 Phone: 800-228-7230 Fax: 402-727-1363 Web: www.kellyklosure.com	
REVISION: DATE:	SCALE: 1 1/2" = 1'-0"	K.K. ORDER NUMBER:		K.K. QUOTE NUMBER:		PROPRIETARY INFORMATION THIS DRAWING & THE DESIGN IT COVERS ARE THE EXCLUSIVE PROPERTY OF KELLY GROUP, INC. NO PART OF THIS DRAWING OR DESIGN MAY BE REPRODUCED OR TRANSMITTED IN ANY FORM OR BY ANY MEANS, ELECTRONIC OR MECHANICAL, INCLUDING PHOTOCOPYING, RECORDING, OR BY ANY INFORMATION STORAGE AND RETRIEVAL SYSTEM, WITHOUT THE WRITTEN PERMISSION OF KELLY GROUP, INC. OF NE. TO THE USER OR THEIR AGENTS. KELLY GROUP, INC. OF NE. MAKES NO REPRESENTATION REGARDING THE SCALE & ACCURACY.	

ATTENTION INSTALLER:

DOOR PANEL MUST BE POSITIONED AND ADJUSTED IN THE FIELD. DUE TO CONDITIONS OF THE FOUNDATION / FLOOR, WE HAVE NO CONTROL OVER PROPER ALIGNMENT OF DOOR PANEL.



NOTE: IF FACTORY WELDED NUTS STRIP OUT OR ARE NOT LINING UP PROPERLY, KELLY KLOSURE HAS SUPPLIED A FEW LINDAPTER HOLLO-BOLTS FOR THE DOOR PANEL TO ADJACENT PANEL CONNECTION.

IMPORTANT NOTE:
OVERHEAD DOORS ARE SUPPLIED ONLY!

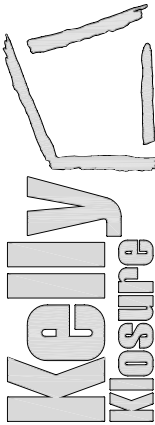
INSTALLATION & SERVICE BY OTHERS!
(INSTRUCTIONS FOR OVERHEAD DOOR ARE INCLUDED WITH THE DOOR)

FACTORY QUALITY CONTROL
DOORS ARE INSPECTED AT THE MANUFACTURING FACILITY FOR SQUARENESS AND PROPER DIMENSIONS BEFORE SHIPMENT. IF PRODUCT DAMAGE IS INCURRED DURING SHIPMENT, THIS DAMAGE MUST BE NOTED ON THE RECEIVING NOTICE AT THE TIME OF OFF LOADING AT THE BUILDING SITE. THE MANUFACTURER MUST BE NOTIFIED OF SUCH DAMAGE IMMEDIATELY.

FOR FACTORY ASSISTANCE IN DOOR ALIGNMENT CALL 800-228-7230

DOOR INSTALLATION

EASY TO ASSEMBLE PANEL
SYSTEMS FOR RELOCATABLE
ENCLOSURES FROM WEATHER
BARRIERS TO BUILDINGS



Mfr. by Kelly Group, Inc.
P.O. Box 1058 Fremont, NE 68026
Phone: 800-228-7230 Fax: 402-727-1363 Web: www.kellyklosure.com

DOOR INSTALLATION
INSTRUCTIONS

SHEET S.S. OF 2

PROJECT TITLE:

DRAWN BY:
A. MRUZ

DATE:
2-24-06

APPROVED BY:

DATE:

REVISION:

DATE:

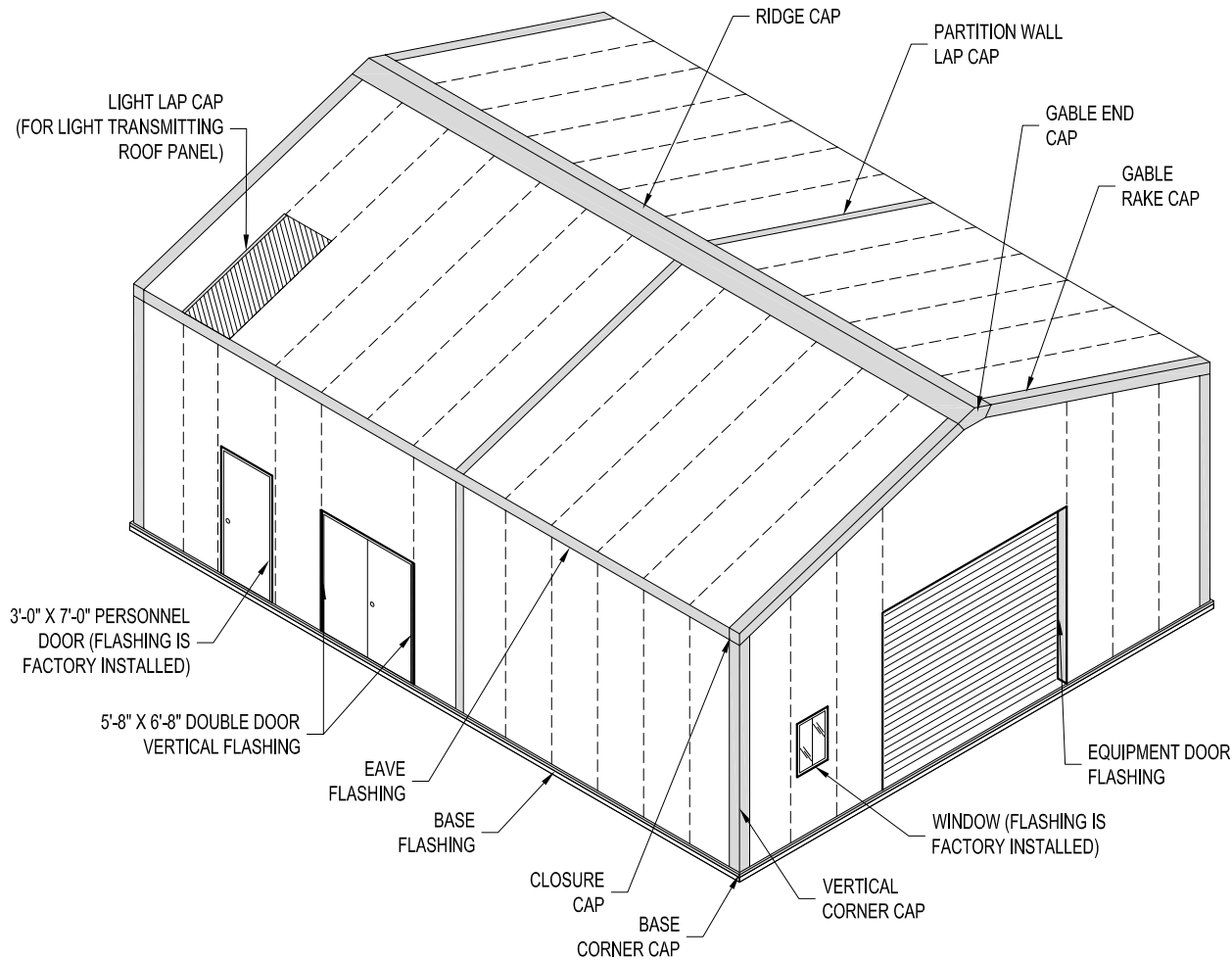
SCALE:
1"=1'-0"

K.K. QUOTE NUMBER:

CUSTOMER P.O. NUMBER:

K.K. ORDER NUMBER:

PROPRIETARY INFORMATION
THE DRAWINGS ARE THE PROPERTY OF KELLY KLOSURE, INC. AND ARE NOT TO BE REPRODUCED OR TRANSMITTED IN ANY FORM OR BY ANY MEANS, ELECTRONIC OR MECHANICAL, INCLUDING PHOTOCOPYING, RECORDING, OR BY ANY INFORMATION STORAGE AND RETRIEVAL SYSTEM, WITHOUT THE WRITTEN PERMISSION OF KELLY KLOSURE, INC. THE DRAWINGS ARE PROVIDED ON THE UNDERSTANDING THAT THEY ARE NOT TO BE REPRODUCED OR TRANSMITTED IN ANY FORM OR BY ANY MEANS, ELECTRONIC OR MECHANICAL, INCLUDING PHOTOCOPYING, RECORDING, OR BY ANY INFORMATION STORAGE AND RETRIEVAL SYSTEM, WITHOUT THE WRITTEN PERMISSION OF KELLY KLOSURE, INC. THE DRAWINGS ARE PROVIDED ON THE UNDERSTANDING THAT THEY ARE NOT TO BE REPRODUCED OR TRANSMITTED IN ANY FORM OR BY ANY MEANS, ELECTRONIC OR MECHANICAL, INCLUDING PHOTOCOPYING, RECORDING, OR BY ANY INFORMATION STORAGE AND RETRIEVAL SYSTEM, WITHOUT THE WRITTEN PERMISSION OF KELLY KLOSURE, INC.



BUILDING FLASHING INSTALLATION LOCATIONS

GUTTERS AND DOWNSPOUTS NOT SHOWN
SEE PAGE GUTTER INSTALLATION PAGES FOR INFORMATION

NOTE:
REMOVE PROTECTIVE FILM FROM FLASHING
MATERIAL PRIOR TO INSTALLATION IF APPLICABLE

IMPORTANT NOTE:
OVERHEAD DOORS ARE SUPPLIED ONLY!

INSTALLATION & SERVICE BY OTHERS!

(INSTRUCTIONS FOR OVERHEAD DOOR ARE INCLUDED WITH THE DOOR)

FLASHING INSTALLATION SEQUENCE

(SEE PAGES DIRECTLY FOLLOWING THIS PAGE
FOR INSTALLATION OF THE FOLLOWING PARTS)

1. BASE FLASHING
SUPPLIED IN 10'-0" LENGTHS
2. BASE FLASHING CORNER CAPS
SUPPLIED AS SHOWN
3. VERTICAL CORNER CAPS
TYPICALLY SUPPLIED IN 10'-0" LENGTHS
(THESE PIECES WILL BE THE SAME
PROFILE AS THE GABLE RAKE CAPS)
4. INSTALL PARTITION WALL & REMOVABLE ROOF
LAPS CAPS (IF APPLICABLE)
4. EAVE FLASHING
SUPPLIED IN 10'-0" LENGTHS
**INSTALL GUTTERS AND DOWNSPOUTS
DURING THIS STEP IF SUPPLIED**
(SEE THE GUTTER INSTALLATION PAGES FOR DETAILS)
5. GABLE RAKE CAPS
TYPICALLY SUPPLIED IN 10'-0" LENGTHS
(THESE PIECES WILL BE THE SAME
PROFILE AS THE VERTICAL CORNER CAPS)
6. CLOSURE CAPS
SUPPLIED AS SHOWN
(THERE WILL BE DIFFERENT CLOSURE CAPS
FOR THE RIGHT AND LEFT SIDE AS YOU FACE
THE GABLE END WALL OF THE BUILDING)
7. GABLE END CAP
SUPPLIED AS SHOWN
8. RIDGE CAP
SUPPLIED IN 10'-0" PEICES
9. INSTALL ALL REMAINING MATERIAL
INCLUDING SKY LIGHT LAPS CAPS, EQUIPMENT DOOR
FLASHING, DOUBLE DOOR VERTICAL FLASHING &
ANY OTHER MATERIAL REQUIRED.



EXISTING SLAB
BASE FLASHING



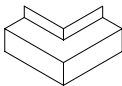
EQUIPMENT DOOR FLASHING



BASE FLASHING



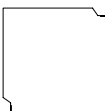
DOUBLE DOOR VERTICAL TRIM



BASE CORNER CAP



GUTTER SECTION



VERTICAL CORNER CAPS
& GABLE RAKE CAPS



LIGHT LAP CAP &
GUTTER SUPPORT CAHNNEL



EAVE FLASHING



PARTITION WALL /
REMOVABLE ROOF LAP CAP

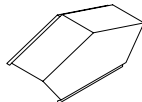


LEFT

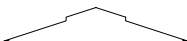


RIGHT

CLOSURE CAPS



GABLE END CAP



RIDGE FLASHING

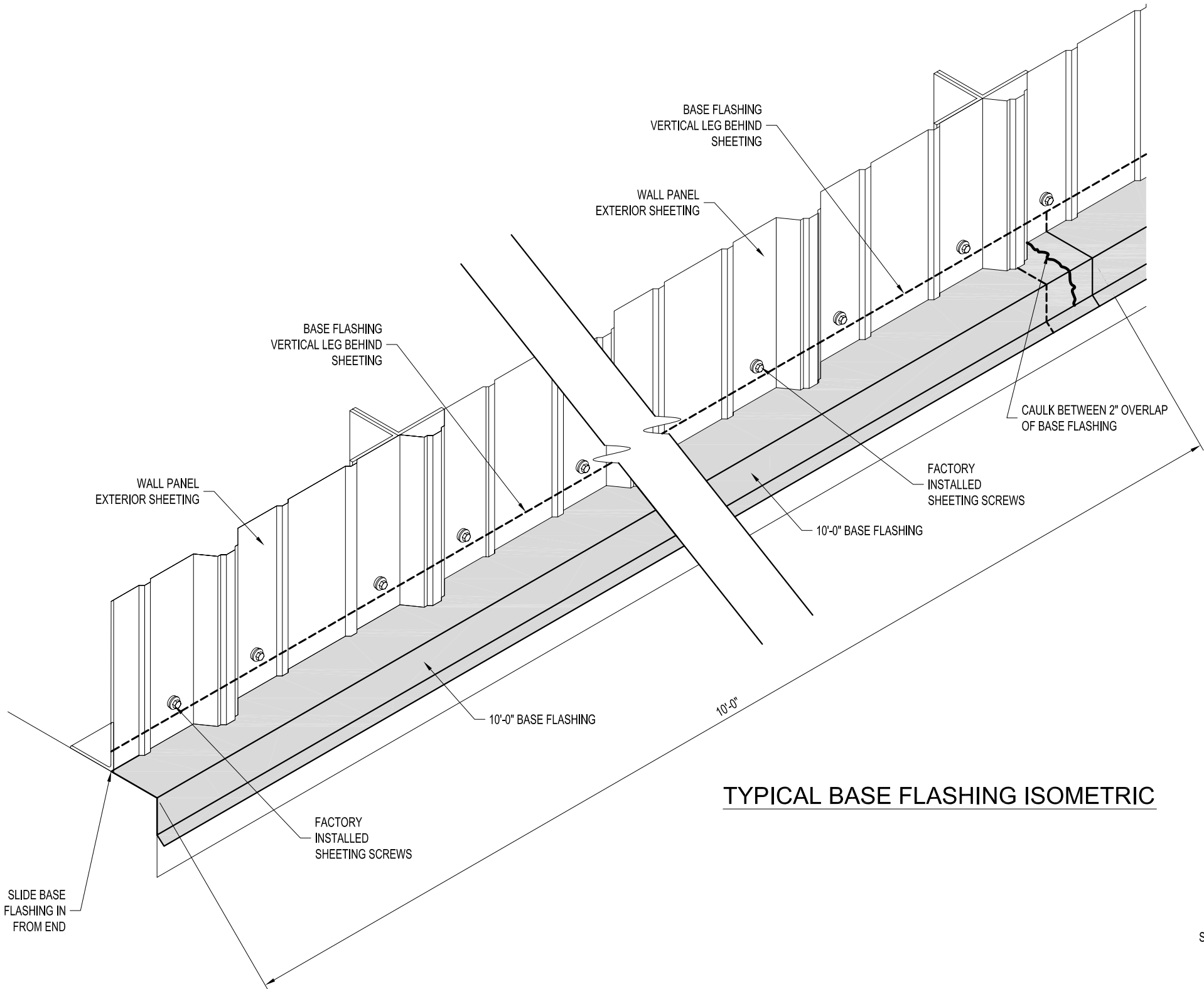
BASE FLASHING INSTALLATION

INSTALLATION INSTRUCTIONS:

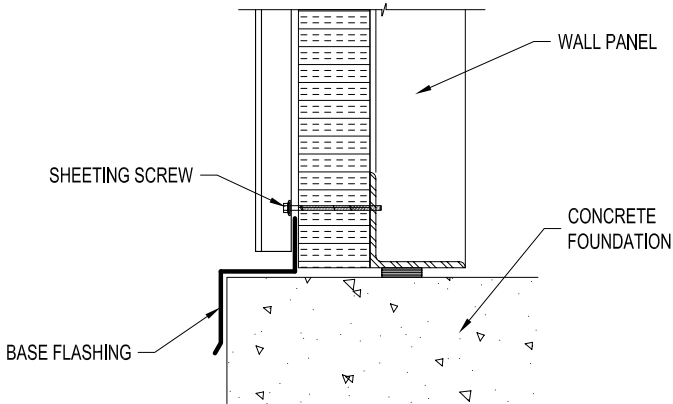
- 1.) LOOSEN BOTTOM ROW OF SHEETING SCREWS (DO NOT REMOVE).
- 2.) SLIDE BASE FLASHING IN FROM END OF WALL. OVERLAP SECTIONS BY 2" AND CAULK AT FLASHING LAP JOINTS.
- 3.) TIGHTEN SHEETING SCREWS.

TIP: FOR LONGER WALLS, INSTALL
BASE FLASHING AFTER EACH 12'
SECTION OF WALL IS ERECTED

NOTE: BASE FLASHING MAY NEED TO BE
FIELD TRIMMED FOR PROPER FIT.

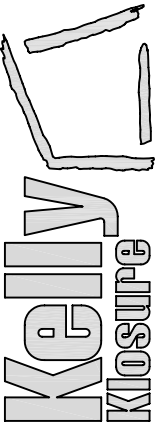


TYPICAL BASE FLASHING ISOMETRIC



BASE SECTION

EASY TO ASSEMBLE PANEL
SYSTEMS FOR RELOCATABLE
ENCLOSURES FROM WEATHER
BARRIERS TO BUILDINGS



Mfg. by Kelly Group, Inc.
P.O. Box 1058 Fremont, NE 68026
Phone: 800-228-7230 Fax: 402-727-1363 Web: www.kellyklosure.com

PAGE TITLE:
BASE FLASHING INSTALLATION

SHEET S.S. OF 4

PROJECT TITLE:

DRAWN BY:
C. KNEIFL

DATE:
4/21/2006

APPROVED BY:
DATE:

REVISION:
DATE:

SCALE:
1 1/2"=1'-0"

K.K. QUOTE NUMBER:

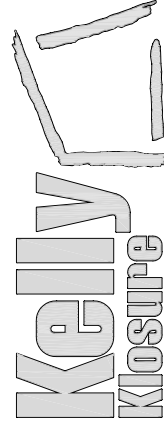
CUSTOMER P.O. NUMBER:

K.K. ORDER NUMBER:

PROPRIETARY INFORMATION
THIS DRAWING IS THE PROPERTY OF KELLY GROUP, INC. AND IS NOT TO BE REPRODUCED OR TRANSMITTED IN ANY FORM OR BY ANY MEANS, ELECTRONIC OR MECHANICAL, INCLUDING PHOTOCOPYING, RECORDING, OR BY ANY INFORMATION STORAGE AND RETRIEVAL SYSTEM, WITHOUT THE WRITTEN PERMISSION OF KELLY GROUP, INC. THE USER OF THIS DRAWING AGREES TO HOLD KELLY GROUP, INC. HARMLESS FROM AND AGAINST ALL SUCH REPRODUCTION, TRANSMISSION, OR OTHER VIOLATION OF THE DRAWING. KELLY GROUP, INC. MAKES NO REPRESENTATION REGARDING DRAWING SCALE & ACCURACY.

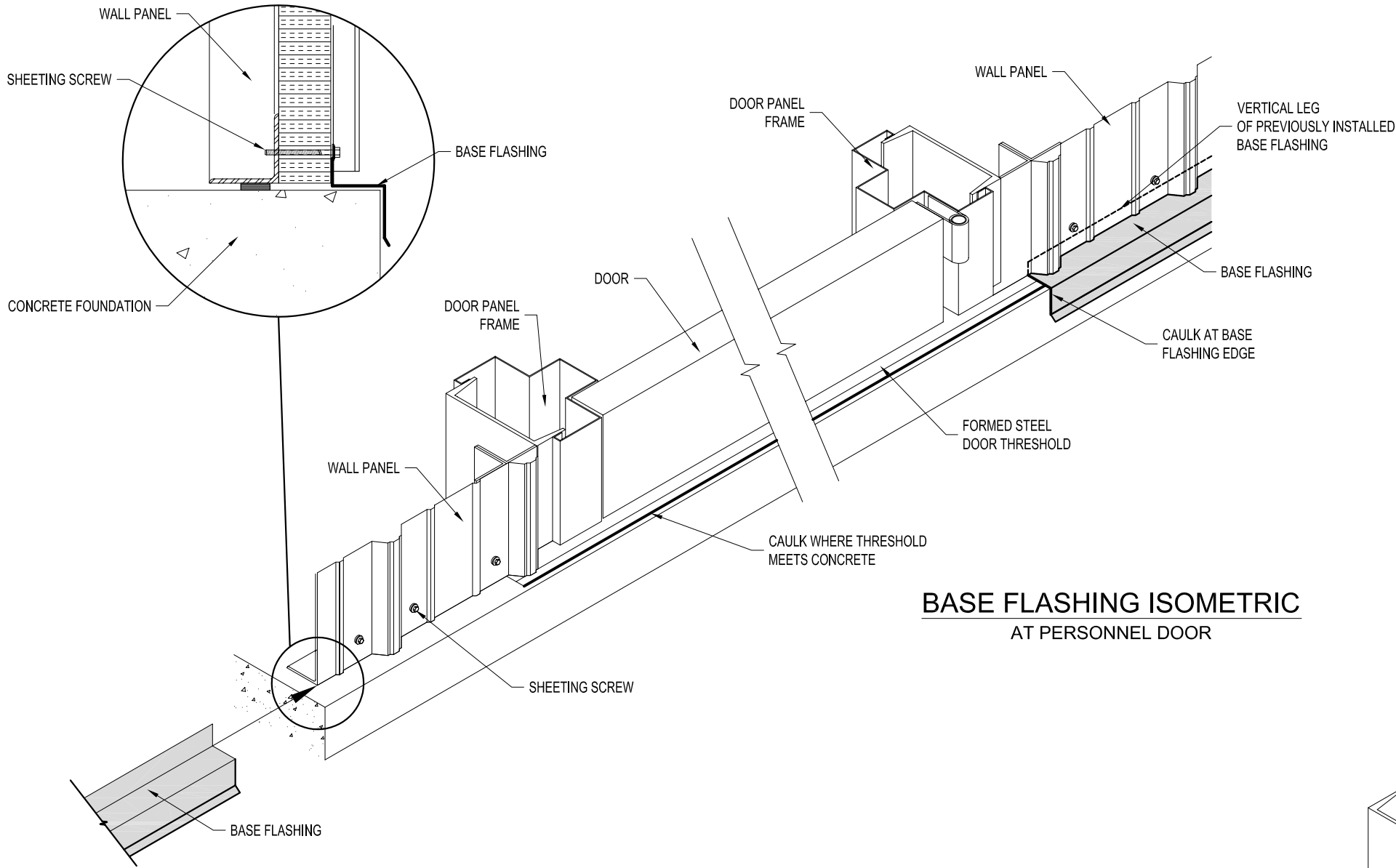
BASE FLASHING AT DOORS

EASY TO ASSEMBLE PANEL
SYSTEMS FOR RELOCATABLE
ENCLOSURES FROM WEATHER
BARRIERS TO BUILDINGS

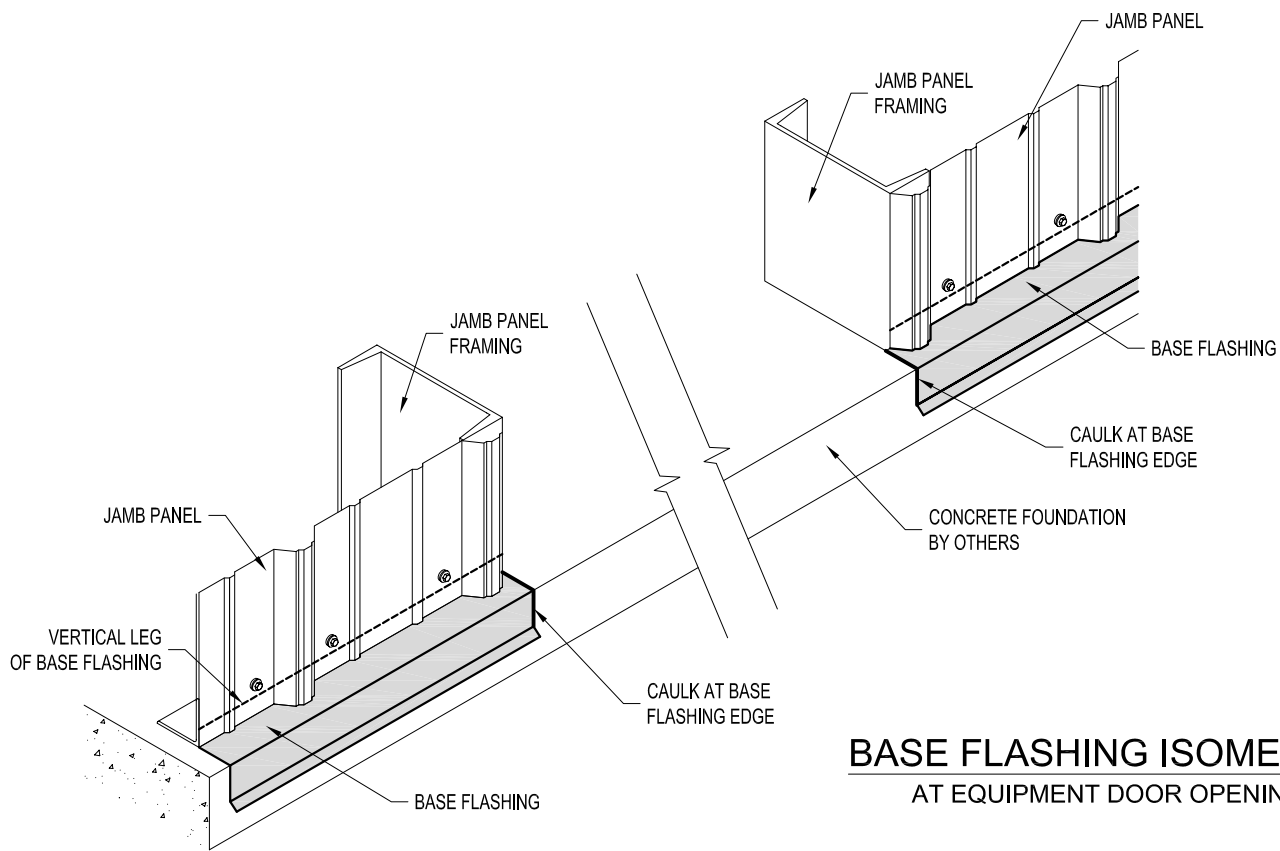


Mfg. by Kelly Group, Inc.
P.O. Box 1058 Fremont, NE 68026
Phone: 800-228-7230 Fax: 402-727-1363 Web: www.kellyklosure.com

PROJECT TITLE:		PAGE TITLE:	
C. KNEIFL		BASE FLASHING INSTALLATION AT DOOR OPENINGS	
DATE: 4/11/2006			
APPROVED BY:			
DATE:			
DATE:		K.K. ORDER NUMBER:	
		CUSTOMER P.O. NUMBER:	
SCALE: 1 1/2"=1'-0"		PROPRIETARY INFORMATION	
K.K. QUOTE NUMBER:		THE DRAWINGS & THE DESIGN COVERS ARE THE EXCLUSIVE PROPERTY OF KELLY GROUP, INC. IT IS TO BE USED ONLY FOR THE PROJECT AND SITE SPECIFICALLY IDENTIFIED IN THE TITLE. IT IS NOT TO BE REPRODUCED, COPIED, LOANED, EXHIBITED, CHANGED OR OTHERWISE USED EXCEPT IN THE LIMITED CIRCUMSTANCES DESCRIBED HEREIN WITHOUT THE WRITTEN PERMISSION OF KELLY GROUP, INC. KELLY GROUP, INC. MAKES NO REPRESENTATION REGARDING DRAWING SCALE & ACCURACY.	



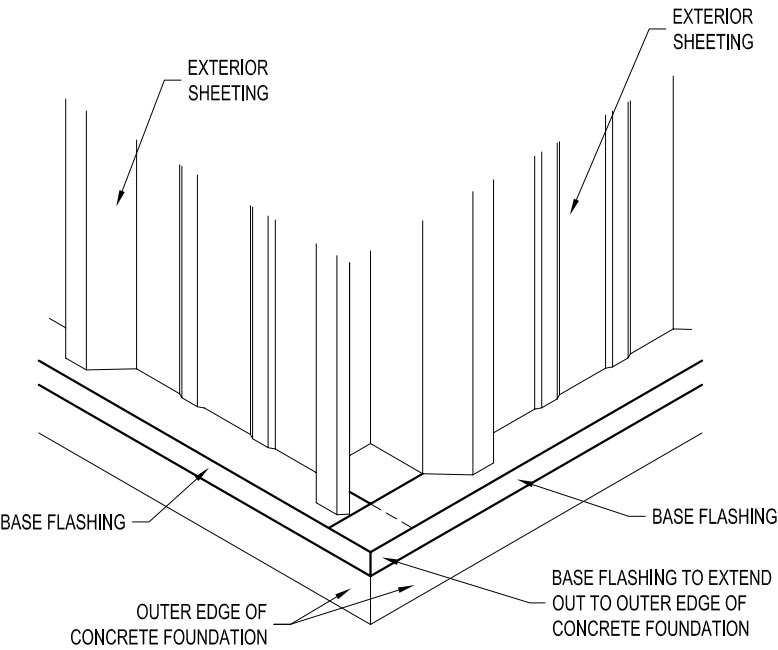
BASE FLASHING ISOMETRIC
AT PERSONNEL DOOR



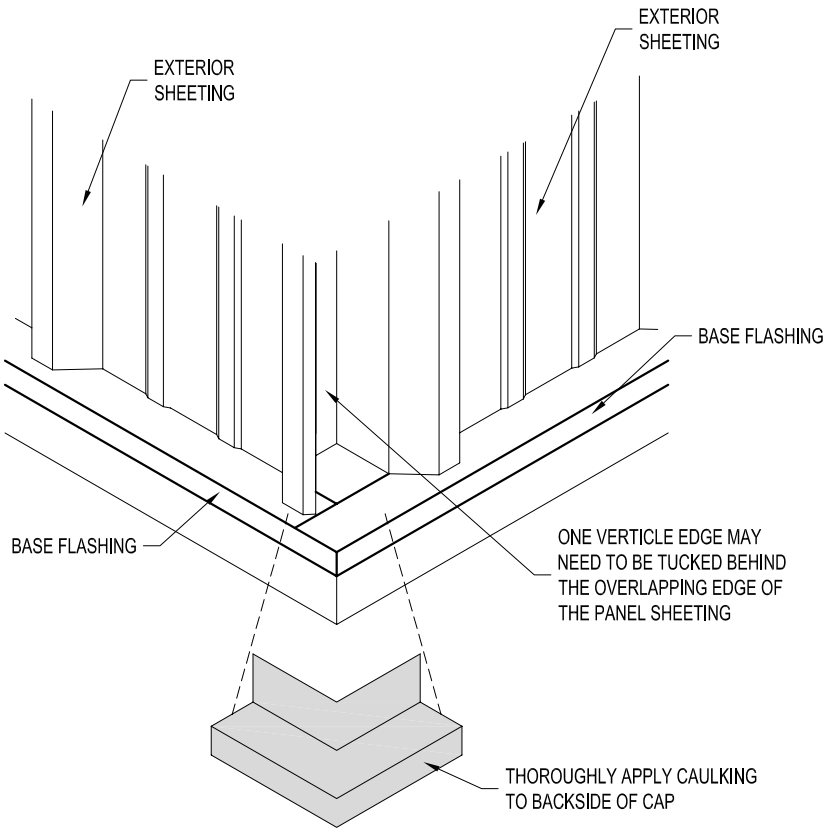
BASE FLASHING ISOMETRIC
AT EQUIPMENT DOOR OPENING

THIS PAGE IS TYPICAL
FOR BOTH INSULATED &
NON-INSULATED BUILDINGS

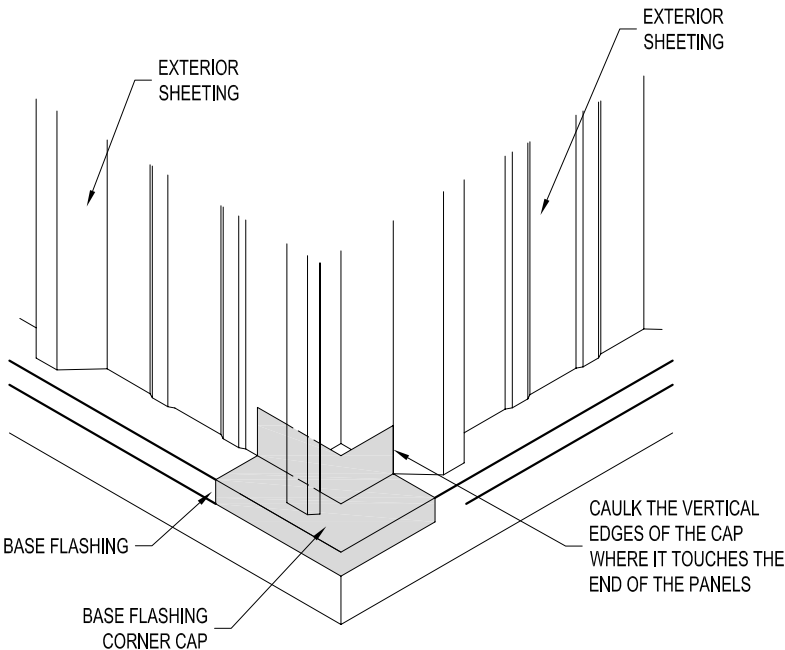
BASE FLASHING CORNER CAP



STEP #1
INSTALL BASE FLASHING AS SHOWN, EXTENDING EACH PIECE OUT TO THE OUTER EDGE OF THE CONCRETE FOUNDATION SHOWN.

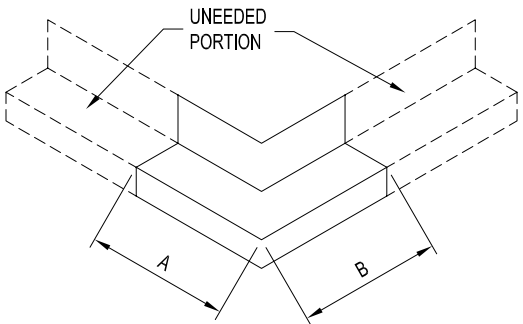


STEP #3
INSTALL BASE FLASHING CORNER CAP AS SHOWN. CAULK BETWEEN BASE FLASHING AND CORNER CAP.

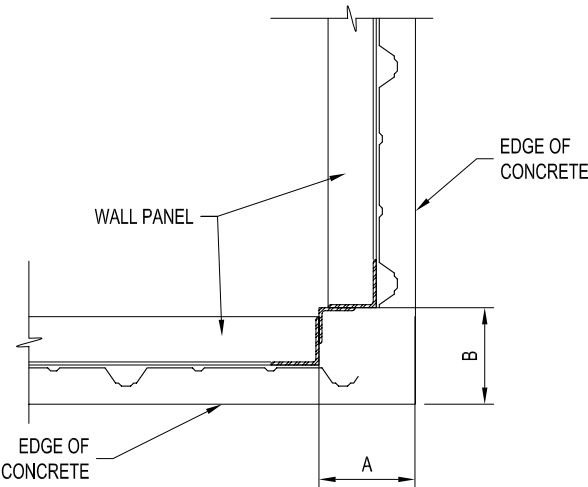


STEP #4
SCREW OR POP RIVET BASE FLASHING CORNER CAP TO THE BASE FLASHING IF NEEDED

FINISHED CORNER LAP



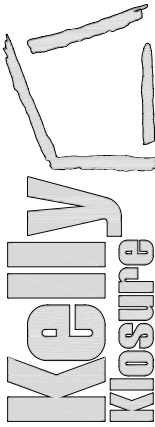
STEP #2
FIELD PREP BASE FLASHING CORNER CAP BY TRIMMING OFF UNNEEDED PORTION. THIS IS ACHIEVED BY MEASURING THE DISTANCE FROM OUTER EDGE OF CONCRETE TO EDGE OF WALL PANEL AT THE CORNER (SEE DETAIL #1). NOW APPLY THESE MEASUREMENTS TO THE CAP AND TRIM OFF THE UNNEEDED PORTION.



DETAIL #1

THIS PAGE IS TYPICAL
FOR BOTH INSULATED &
NON-INSULATED BUILDINGS

EASY TO ASSEMBLE PANEL
SYSTEMS FOR RELOCATABLE
ENCLOSURES FROM WEATHER
BARRIERS TO BUILDINGS



Mfg. by Kelly Group, Inc.
P.O. Box 1058 Fremont, NE 68026
Phone: 800-228-7230 Fax: 402-727-1363 Web: www.kellyklosure.com

BASE FLASHING CORNER
CAP INSTALLATION

SHEET S.S. OF 6

PAGE TITLE:

PROJECT TITLE:

DRAWN BY:

C. KNEIFL

DATE:

4/5/2006

APPROVED BY:

DATE:

REVISION:

DATE:

SCALE: 1 1/2"=1'-0"

K.K. QUOTE NUMBER:

CUSTOMER P.O. NUMBER:

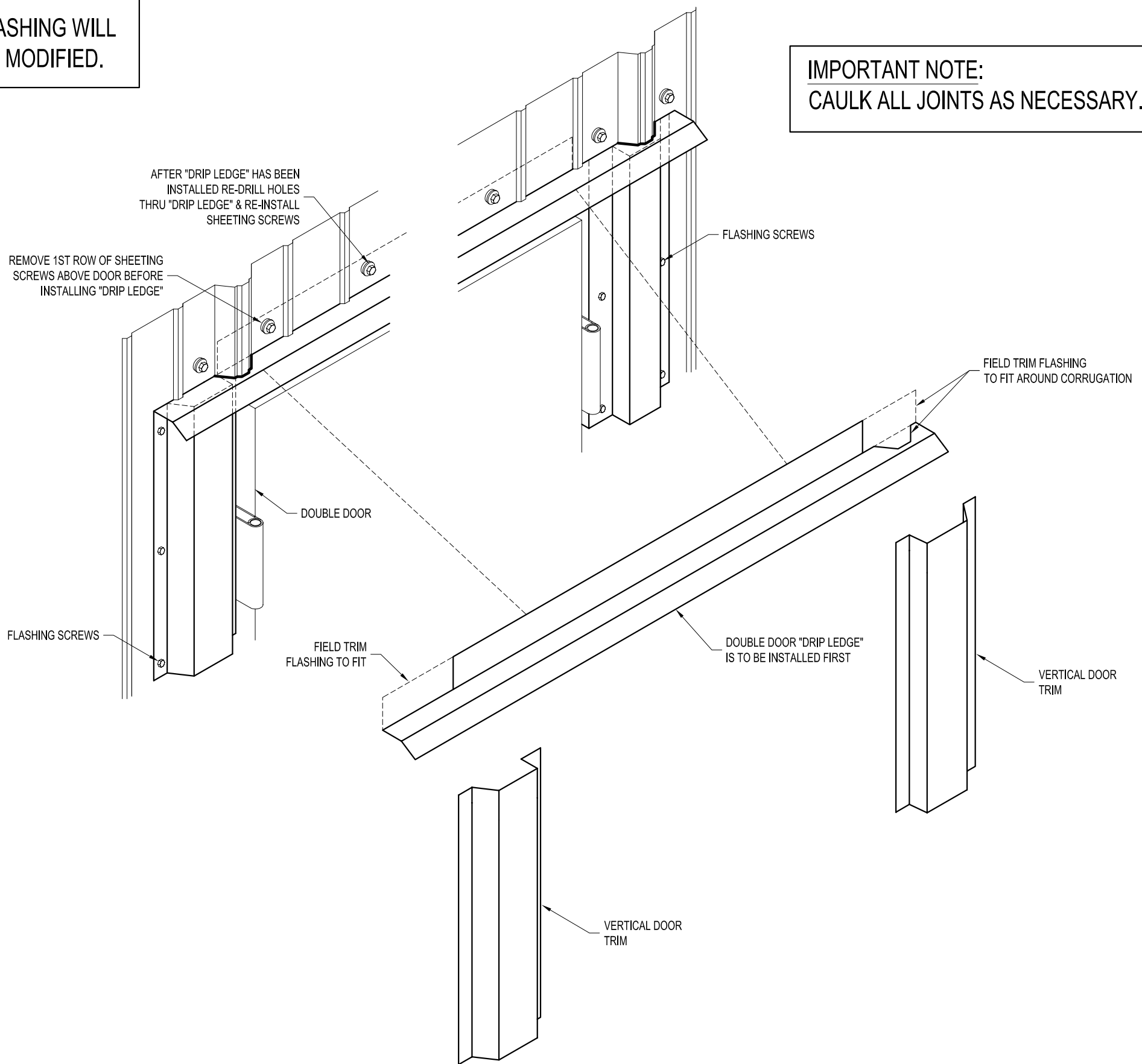
K.K. ORDER NUMBER:

PROPRIETARY INFORMATION
THIS DRAWING & THE DESIGN IT COVERS ARE THE EXCLUSIVE PROPERTY OF KELLY GROUP, INC. NO REPRODUCTION, COPIING, LOANING, RENTING, EXHIBITING, CHANGING OR OTHERWISE USED EXCEPT IN THE LIMITED MANNER AUTHORIZED BY KELLY GROUP, INC. WITHOUT THE WRITTEN PERMISSION OF KELLY GROUP, INC. NO WARRANTIES OR REPRESENTATIONS REGARDING SCALE & ACCURACY.

IMPORTANT NOTE:
DOUBLE DOOR FLASHING WILL
NEED TO BE FIELD MODIFIED.

DOUBLE DOOR FLASHING

IMPORTANT NOTE:
CAULK ALL JOINTS AS NECESSARY.



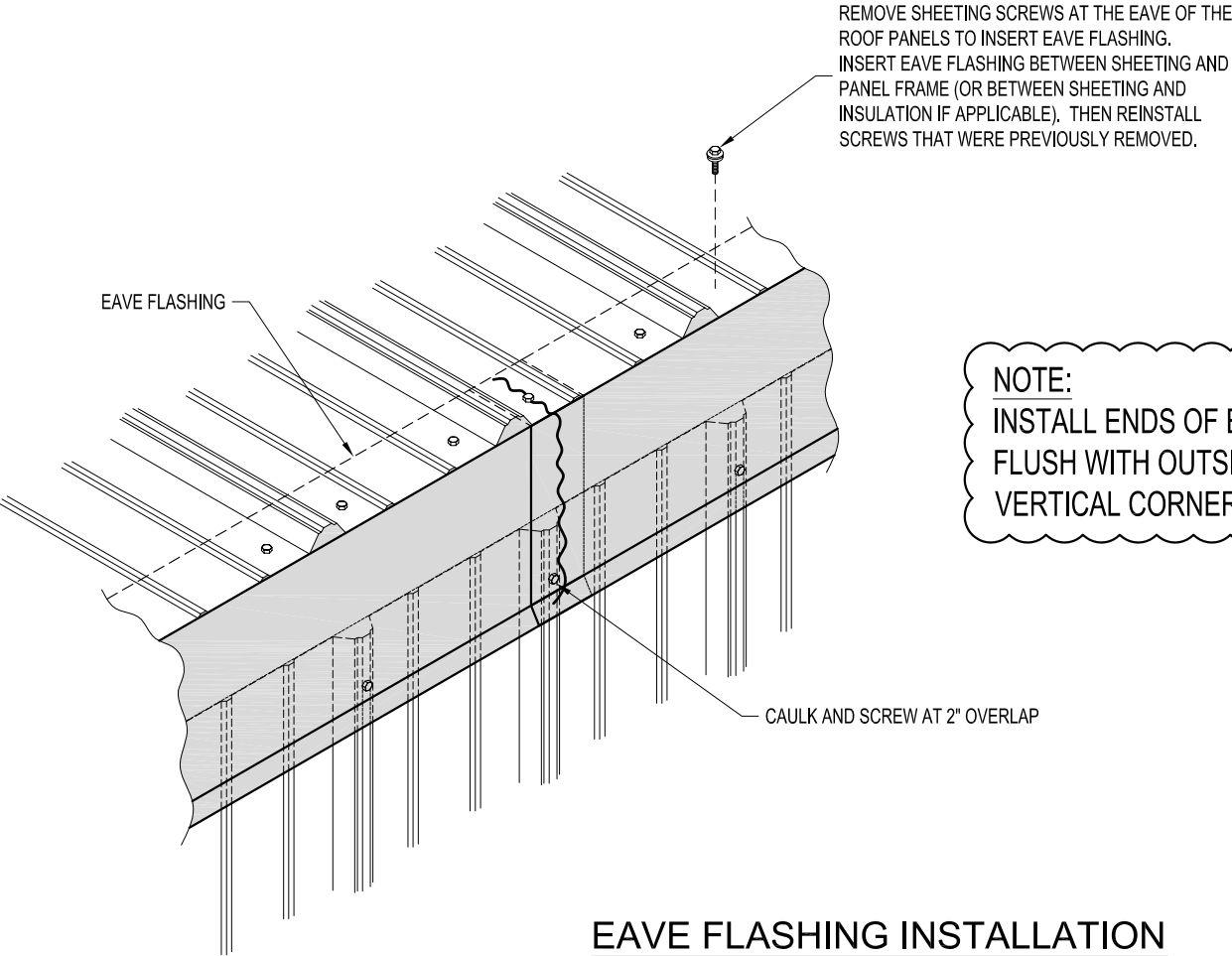
PROJECT TITLE:		PAGE TITLE:	
DOUBLE DOOR FLASHING INSTALLATION		DOUBLE DOOR FLASHING INSTALLATION	
SHEET S.S. OF 7		SHEET S.S. OF 7	
DRAWN BY: C. KNEIFL		K.K. ORDER NUMBER:	
DATE: 6-1-06		CUSTOMER P.O. NUMBER:	
APPROVED BY:		PROPRIETARY INFORMATION	
DATE:		THE DRAWING IS THE PROPERTY OF KELLY KLOSURE, INC. IT IS TO BE USED ONLY FOR THE PROJECT AND SITE SPECIFICALLY IDENTIFIED ON THE DRAWING. IT IS NOT TO BE REPRODUCED, COPIED, LOANED, EXHIBITED, OR USED FOR ANY OTHER PURPOSE WITHOUT THE WRITTEN PERMISSION OF KELLY KLOSURE, INC. ANY VIOLATION OF THESE TERMS WILL BE PROSECUTED TO THE FULL EXTENT OF THE LAW.	
REVISION:		KELLY GROUP, INC. OF NE MAKES NO REPRESENTATION REGARDING DRAWING SCALE & ACCURACY.	
DATE:			
SCALE: NO SCALE			
K.K. QUOTE NUMBER:			

Kelly Klosure

EASY TO ASSEMBLE PANEL
SYSTEMS FOR RELOCATABLE
ENCLOSURES FROM WEATHER
BARRIERS TO BUILDINGS

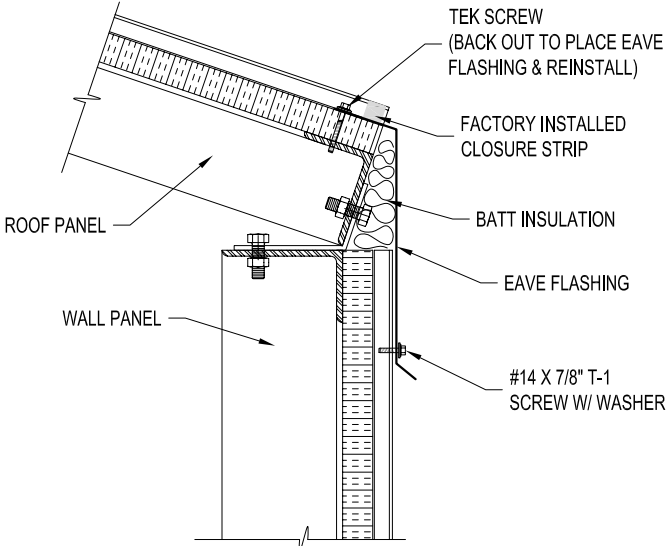
Mfr. by Kelly Group, Inc.
P.O. Box 1058 Fremont, NE 68026
Phone: 800-228-7230 Fax: 402-727-1363 Web: www.kellyklosure.com

EAVE FLASHING

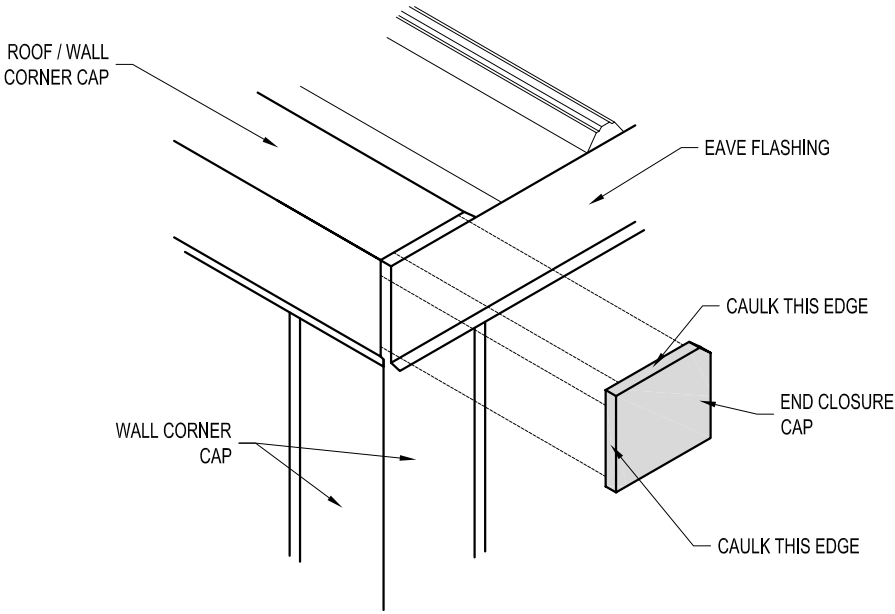


NOTE:
INSTALL ENDS OF EAVE FLASHING
FLUSH WITH OUTSIDE EDGE OF
VERTICAL CORNER CAP

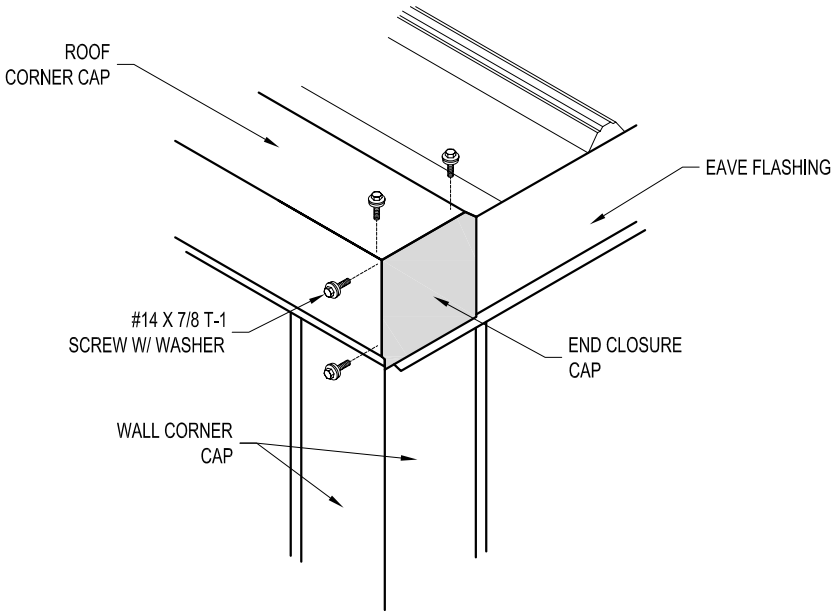
EAVE FLASHING INSTALLATION



SECTION

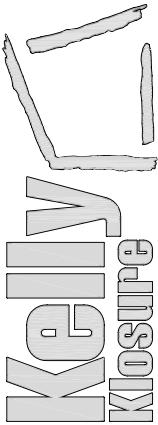


CLOSURE END CAP BEING INSTALLED



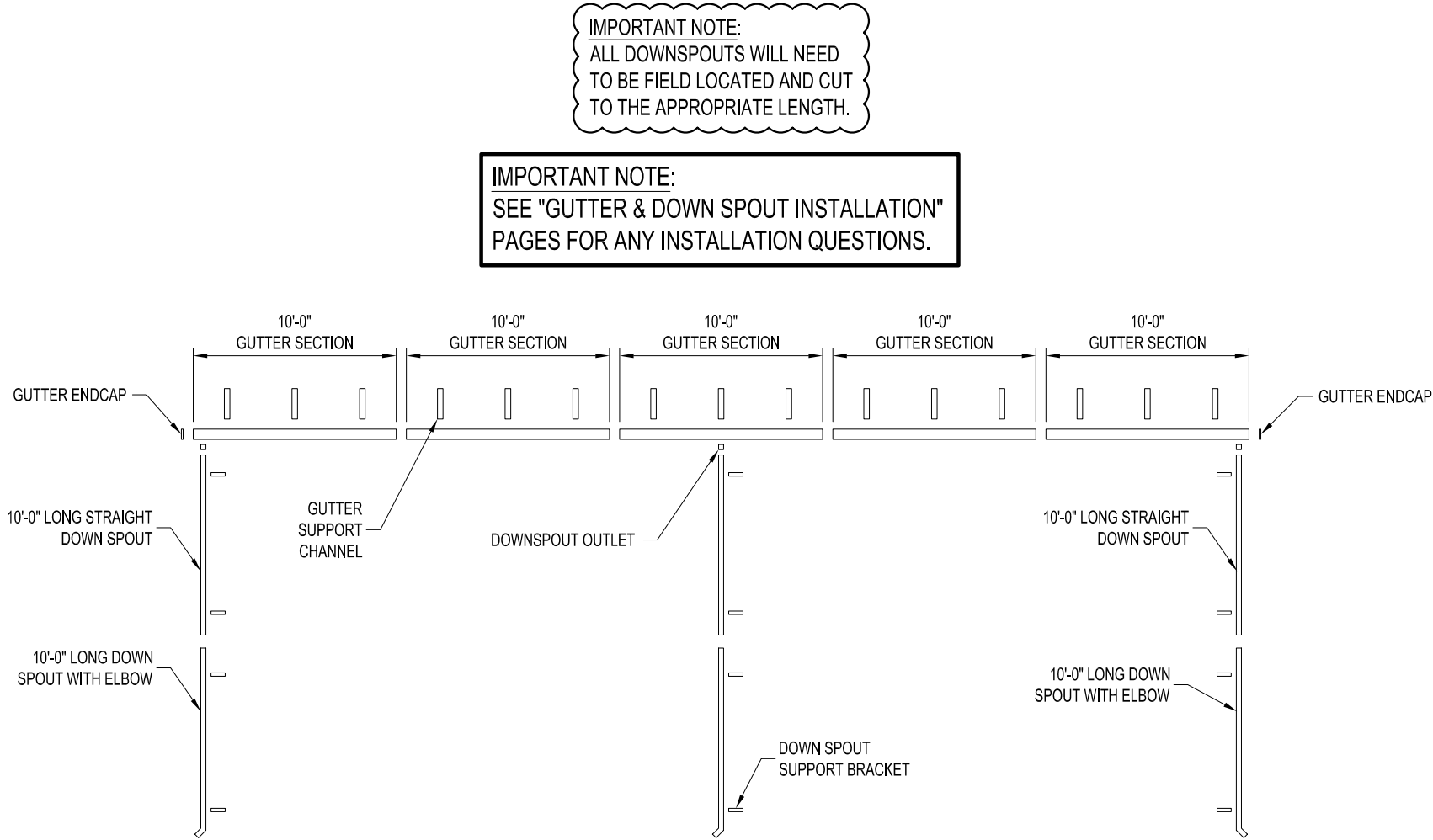
CLOSURE END CAP INSTALLED

EASY TO ASSEMBLE PANEL
SYSTEMS FOR RELOCATABLE
ENCLOSURES FROM WEATHER
BARRIERS TO BUILDINGS



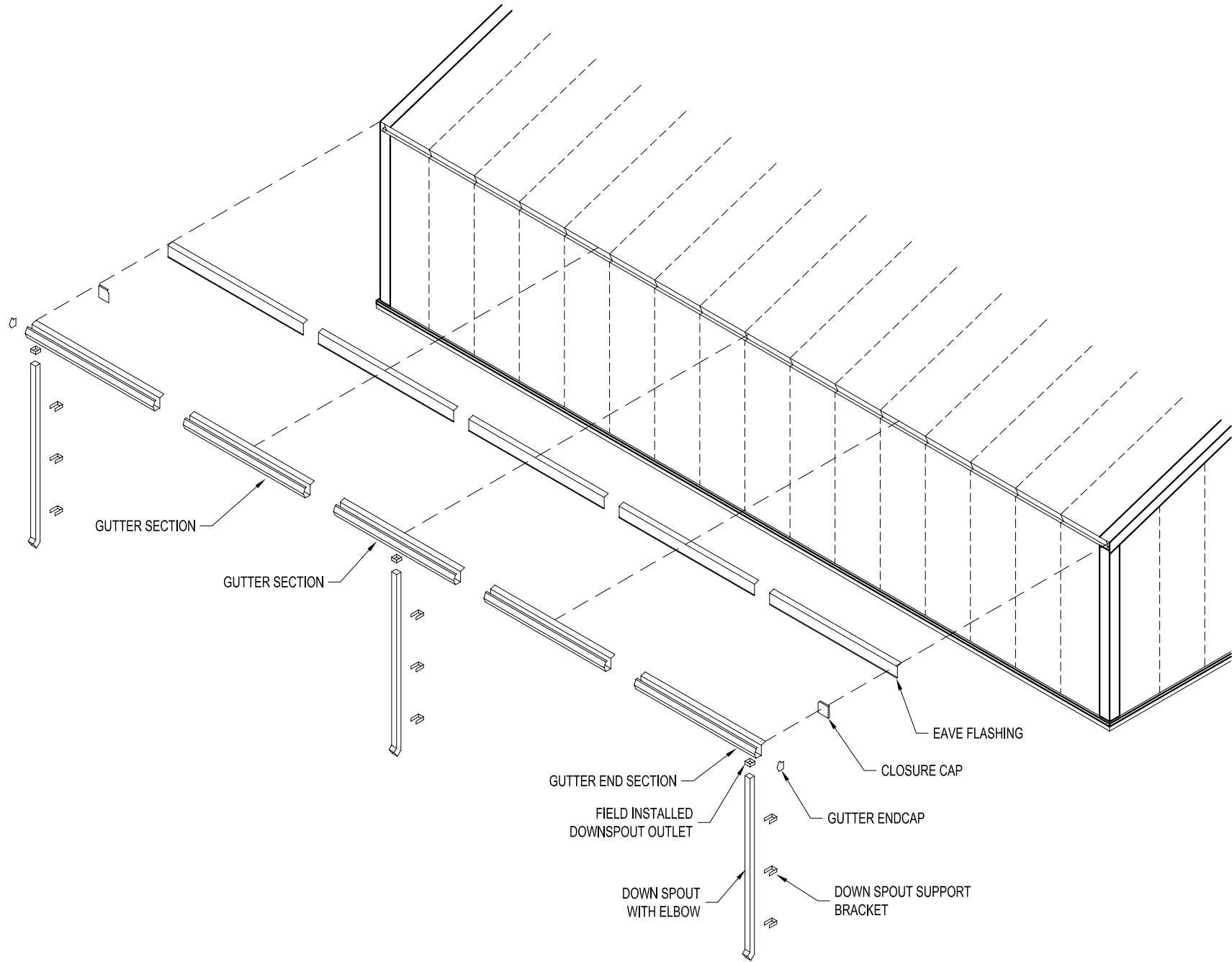
Mfg. by Kelly Group, Inc.
P.O. Box 1058 Fremont, NE 68026
Phone: 800-228-7230 Fax: 402-727-1363 Web: www.kellyklosure.com

PROJECT TITLE:		PAGE TITLE:	
SYSTEM 2 EAVE FLASHING & END CLOSURE CAP INSTALLATION		SYSTEM 2 EAVE FLASHING & END CLOSURE CAP INSTALLATION	
K.K. ORDER NUMBER:		SHEET S.S. OF 8	
CUSTOMER P.O. NUMBER:		PROPRIETARY INFORMATION	
DRAWN BY: C. KNEIFL		THE DRAWING IS THE PROPERTY OF KELLY GROUP, INC. AND IS NOT TO BE REPRODUCED OR TRANSMITTED IN ANY FORM OR BY ANY MEANS, ELECTRONIC OR MECHANICAL, INCLUDING PHOTOCOPYING, RECORDING, OR BY ANY INFORMATION STORAGE AND RETRIEVAL SYSTEM, WITHOUT THE WRITTEN PERMISSION OF KELLY GROUP, INC. ANY UNAUTHORIZED REPRODUCTION OR TRANSMISSION OF THIS DRAWING IS PROHIBITED AND WILL BE PROSECUTED TO THE FULL EXTENT OF THE LAW.	
DATE: 6-1-06		K.K. QUOTE NUMBER:	
APPROVED BY:		SCALE: NO SCALE	
REVISION:		K.K. QUOTE NUMBER:	
DATE:		K.K. QUOTE NUMBER:	



GUTTER SYSTEM LAYFLAT
(SAME FOR OTHER SIDE)

DRAWN BY: ALEX CARSTENS		PROJECT TITLE: SAMPLE ASSEMBLY DRAWINGS		PAGE TITLE: GUTTER LAYFLAT	
DATE: 2/18/11				SHEET S.S. OF 9	
APPROVED BY: DATE:				PROPRIETARY INFORMATION THIS DRAWING & THE DESIGN IT COVERS ARE THE EXCLUSIVE PROPERTY OF KELLY GROUP, INC. NO PART OF THIS DRAWING OR THE DESIGN IT COVERS MAY BE REPRODUCED OR TRANSMITTED IN ANY FORM OR BY ANY MEANS, ELECTRONIC OR MECHANICAL, INCLUDING PHOTOCOPYING, RECORDING, OR BY ANY INFORMATION STORAGE AND RETRIEVAL SYSTEM, WITHOUT THE WRITTEN PERMISSION OF KELLY GROUP, INC. OR ITS DESIGNATED AGENTS. ANY REUSE OF THIS DRAWING OR THE DESIGN IT COVERS WITHOUT THE WRITTEN PERMISSION OF KELLY GROUP, INC. OR ITS DESIGNATED AGENTS IS STRICTLY PROHIBITED. KELLY GROUP, INC. AND ITS DESIGNATED AGENTS ACCEPT NO LIABILITY FOR ANY INACCURACIES OR OMISSIONS IN THIS DRAWING OR THE DESIGN IT COVERS.	
REVISION: DATE:					
SCALE: 1/8" = 1'-0"	BUYER:		Mfr. by Kelly Group, Inc. P.O. Box 1058 Fremont, NE 68026 Phone: 800-228-7230 Fax: 402-727-1363 Web: www.kellyklosure.com		
K.K. QUOTE NUMBER:	K.K. ORDER NUMBER:	BUYER P.O. NUMBER:		EASY TO ASSEMBLE PANEL SYSTEMS FOR RELOCATABLE ENCLOSURES FROM WEATHER BARRIERS TO BUILDINGS	



TYPICAL GUTTER SYSTEM
EXPLODED VIEW

GUTTER SYSTEM AND EAVE FLASHING INSTALLATION INSTRUCTIONS

IMPORTANT NOTES:

1. REFER TO GUTTER SYSTEM LAYFLAT PAGE FOR LOCATIONS OF EACH COMPONENT.
2. GUTTERS TO BE INSTALLED AT SAME TIME AS EAVE FLASHING.
3. CAULK AROUND ALL END CAPS AND BETWEEN EACH JOINT WITH SUPPLIED CAULKING.
4. SOME FIELD CUTTING OF COMPONENTS MAY BE NECESSARY TO ENSURE PROPER FIT.
5. IN COLD CLIMATES WHERE ICE AND SNOW BUILD UP IS A PROBLEM, KELLY RECOMMENDS HEAT TRACE TO PREVENT ICE BUILD UP IN THE GUTTERS AND SNOW GUARDS / BLOCKS TO PREVENT SNOW FROM SLIDING OFF THE ROOF AND DAMAGING THE GUTTERS. THIS MATERIAL IF REQUIRED IS TO BE SUPPLIED AND INSTALLED BY OTHERS.

GUTTER & DOWN SPOUT INSTALLATION PROCEDURE

1. LAYOUT GUTTER SYSTEM MATERIAL AS SHOWN ON THE GUTTER SYSTEM LAYFLAT PAGE. (SEE INDEX FOR PAGE #)
2. INSTALL GUTTER SECTIONS & EAVE FLASHING STARTING AT ONE END OF BUILDING. BE SURE TO INSTALL CLOSURE CAPS AT EACH END OF THE BUILDING BEHIND THE GUTTER SECTION. (SEE FLASHING INSTALLATION DETAILS)
3. TO INSTALL GUTTER SECTIONS & EAVE FLASHING; REMOVE FACTORY INSTALLED SCREWS AT THE END OF THE ROOF SHEETS. SLIDE EAVE FLASHING AND GUTTERS UNDER THE ROOF SHEET AND FOAM FILLER. REINSTALL SCREWS THROUGH ROOF SHEET, GUTTER, EAVE FLASHING AND INTO FRAME.
4. OVERLAP GUTTER SECTIONS BY 3". INSTALL GUTTER ENDCAPS AND DOWNSPOUT OUTLETS IN THE CORRECT LOCATIONS. USE CAULKING AND SUPPLIED RIVETS TO SECURE.
5. AFTER ALL GUTTER SECTIONS ARE INSTALLED, BEGIN FASTENING GUTTER SUPPORT CHANNELS EVERY 3'-0" ON CENTER. THESE CHANNELS SHOULD BE 1'-0" LONG.
6. INSTALL DOWN SPOUTS USING SUPPLIED DOWN SPOUT BRACKETS. USE SUPPLIED TEK SCREWS AND RIVETS TO FASTEN.

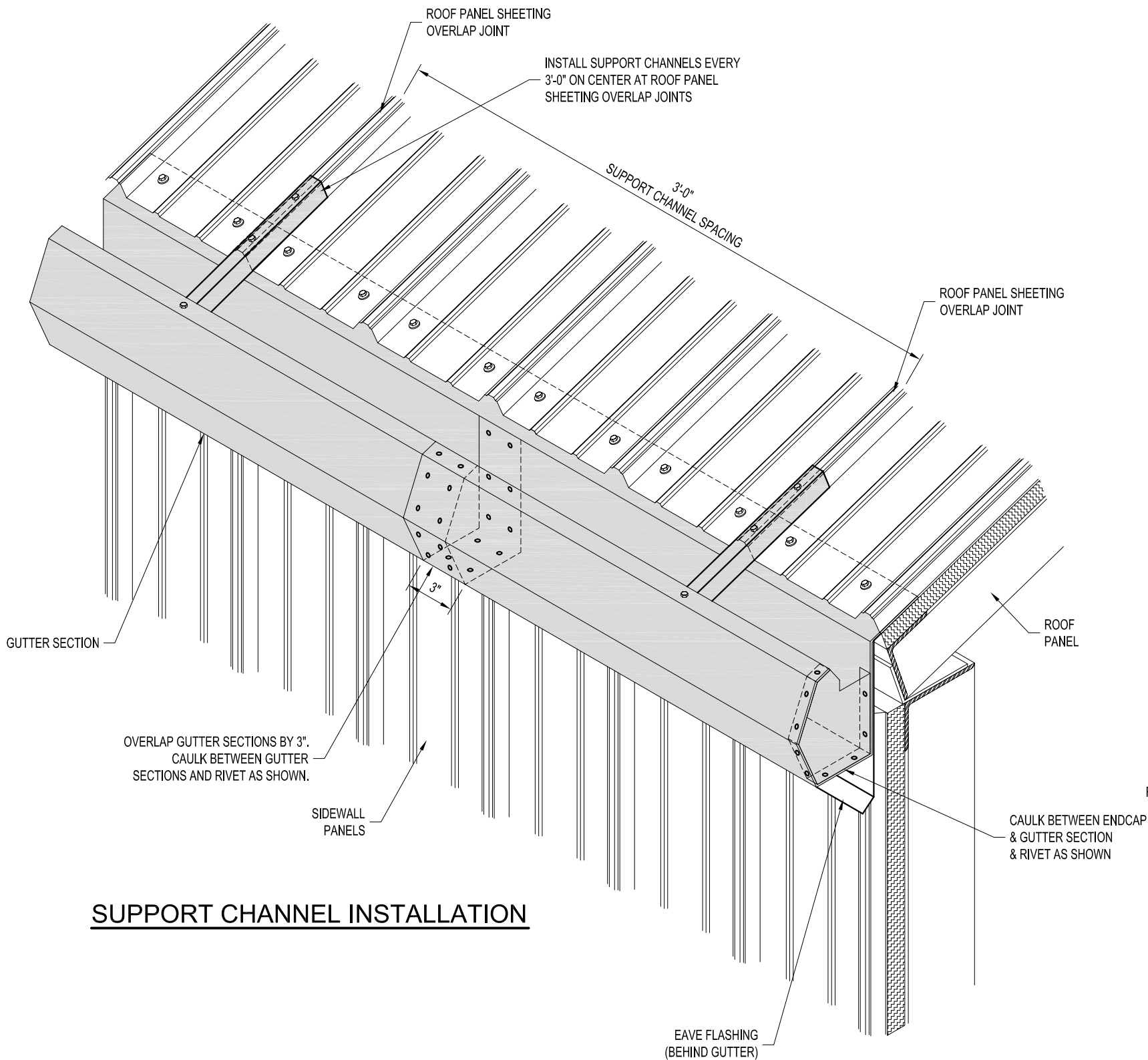
DRAWN BY: ALEX CARSTENS		PROJECT TITLE:		PAGE TITLE:	
DATE: 1/5/11	APPROVED BY:	GUTTER & DOWN SPOUT INSTALLATION INSTRUCTIONS		GUTTER & DOWN SPOUT INSTALLATION INSTRUCTIONS	
REVISION:	DATE:	SHEET S.S. OF 10		SHEET S.S. OF 10	
SCALE: NOT TO SCALE	KK QUOTE NUMBER:	BUYER:		BUYER P.O. NUMBER:	
KK ORDER NUMBER:		BUYER:		BUYER P.O. NUMBER:	

Kelly Klosure

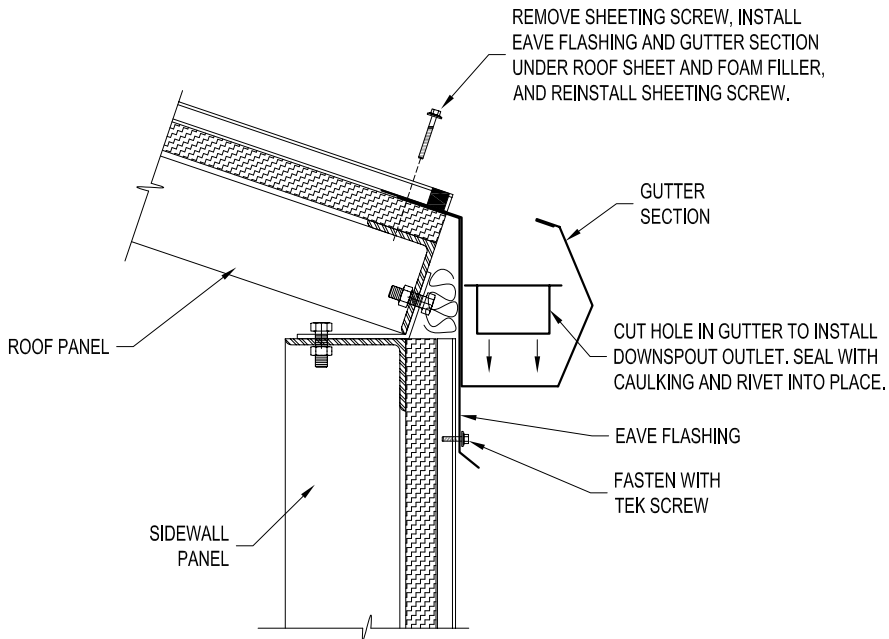
EASY TO ASSEMBLE PANEL
SYSTEMS FOR RELOCATABLE
ENCLOSURES FROM WEATHER
BARRIERS TO BUILDINGS

Mfr. by Kelly Group, Inc.
P.O. Box 1058 Fremont, NE 68026
Phone: 800-228-7230 Fax: 402-727-1363 Web: www.kellyklosure.com

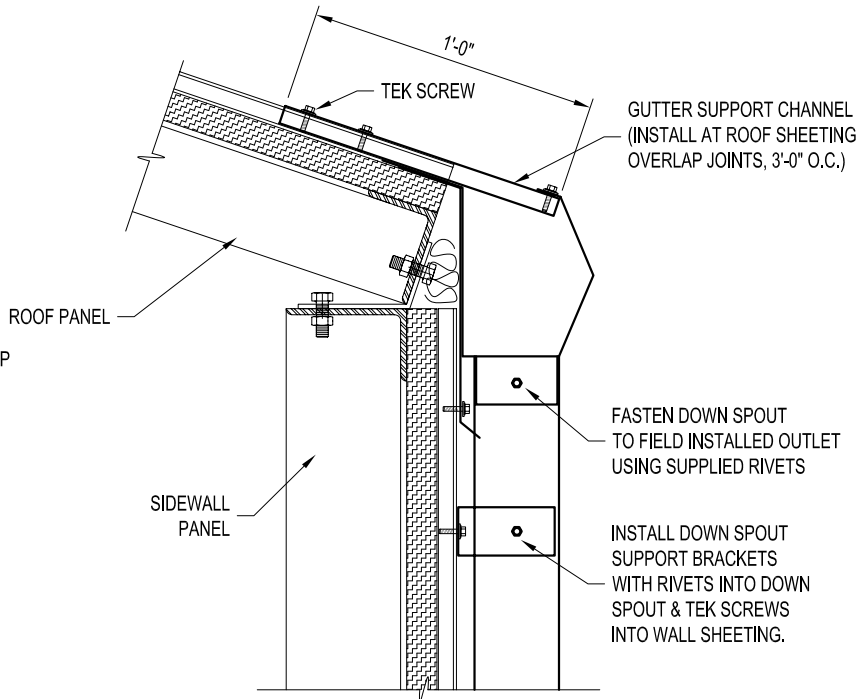
THIS DRAWING & THE DESIGN IT COVERS ARE THE EXCLUSIVE PROPERTY OF KELLY GROUP, INC. NO PART OF THIS DRAWING OR DESIGN MAY BE REPRODUCED OR TRANSMITTED IN ANY FORM OR BY ANY MEANS, ELECTRONIC OR MECHANICAL, INCLUDING PHOTOCOPYING, RECORDING, OR BY ANY INFORMATION STORAGE AND RETRIEVAL SYSTEM, WITHOUT THE WRITTEN PERMISSION OF KELLY GROUP, INC. OR ITS AGENTS. KELLY GROUP, INC. AND ITS AGENTS SHALL BE RESPONSIBLE FOR ANY ERRORS OR OMISSIONS IN THIS DRAWING.



SUPPORT CHANNEL INSTALLATION



INSTALLATION DETAIL
EAVE FLASHING & GUTTER SECTION



INSTALLATION DETAIL
SUPPORT CHANNELS & DOWN SPOUTS

DRAWN BY: ALEX CARSTENS		DATE: 1/5/11		APPROVED BY:		REVISION:		SCALE: NOT TO SCALE		K.K. QUOTE NUMBER:	
PROJECT TITLE:		GUTTER & DOWN SPOUT INSTALLATION DETAILS		SHEET S.S. OF 11		BUYER:		K.K. ORDER NUMBER:		BUYER P.O. NUMBER:	
PAGE TITLE:		GUTTER & DOWN SPOUT INSTALLATION DETAILS		SHEET S.S. OF 11		BUYER:		K.K. ORDER NUMBER:		BUYER P.O. NUMBER:	
<p>PROPRIETARY INFORMATION</p> <p>THIS DRAWING & THE DESIGN IT COVERS ARE THE EXCLUSIVE PROPERTY OF KELLY GROUP, INC. NO PART OF THIS DRAWING OR THE DESIGN IT COVERS MAY BE REPRODUCED OR TRANSMITTED IN ANY FORM OR BY ANY MEANS, ELECTRONIC OR MECHANICAL, INCLUDING PHOTOCOPYING, RECORDING, OR BY ANY INFORMATION STORAGE AND RETRIEVAL SYSTEM, WITHOUT THE WRITTEN PERMISSION OF KELLY GROUP, INC. OR ITS AFFILIATES. ANY UNAUTHORIZED USE OF THIS DRAWING OR THE DESIGN IT COVERS IN THE UNITED STATES OR ANY OTHER COUNTRY IS PROHIBITED. KELLY GROUP, INC. AND ITS AFFILIATES SHALL BE LIABLE FOR ANY DAMAGES, INCLUDING ATTORNEY'S FEES, ARISING OUT OF OR FROM THE USE OF THIS DRAWING OR THE DESIGN IT COVERS.</p>											

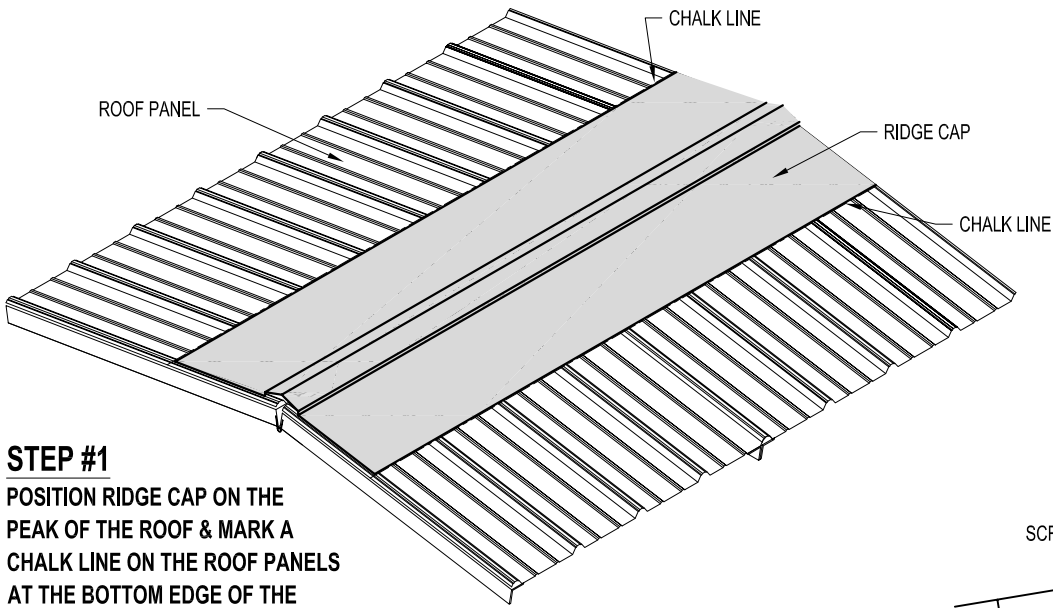
Kelly Klosure

EASY TO ASSEMBLE PANEL
SYSTEMS FOR RELOCATABLE
ENCLOSURES FROM WEATHER
BARRIERS TO BUILDINGS

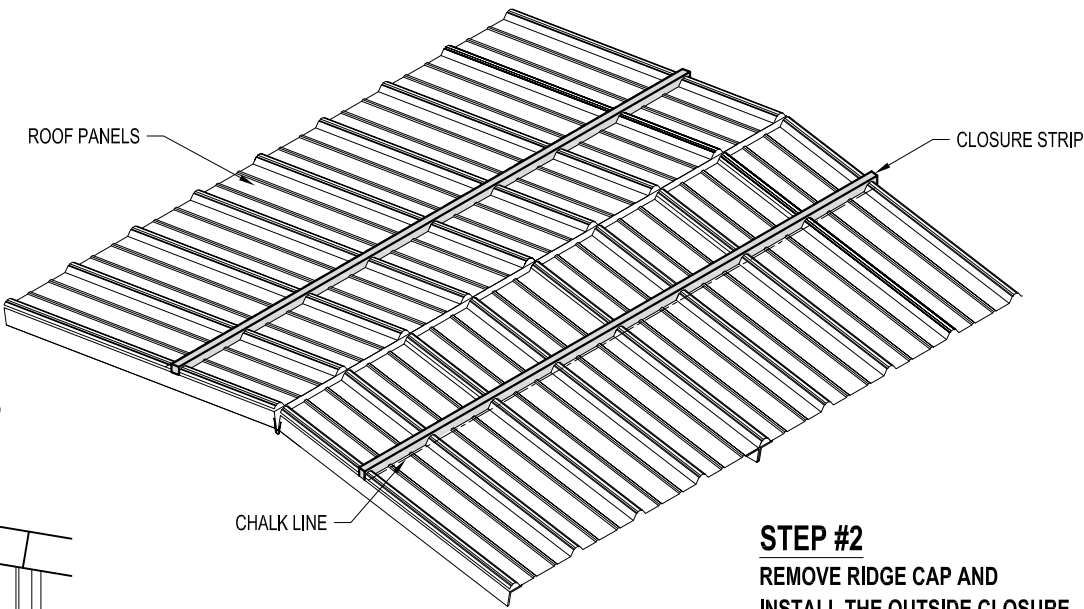
Mfg. by Kelly Group, Inc.
P.O. Box 1058 Fremont, NE 68026
Phone: 800-228-7230 Fax: 402-727-1363 Web: www.kellyklosure.com

RIDGE CAP INSTALLATION

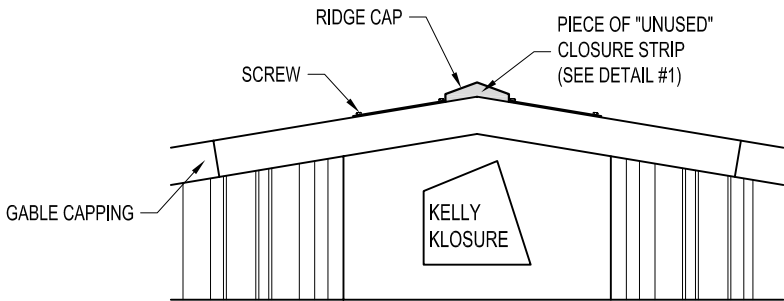
THIS PAGE IS TYPICAL
FOR BOTH INSULATED &
NON-INSULATED BUILDINGS



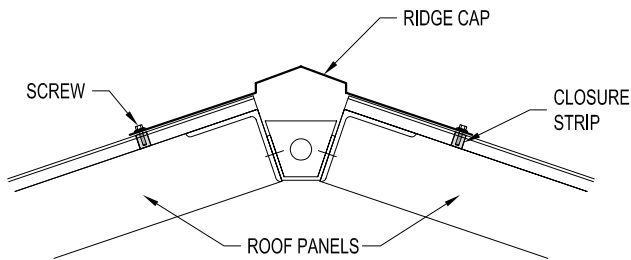
STEP #1
POSITION RIDGE CAP ON THE
PEAK OF THE ROOF & MARK A
CHALK LINE ON THE ROOF PANELS
AT THE BOTTOM EDGE OF THE
RIDGE CAP.



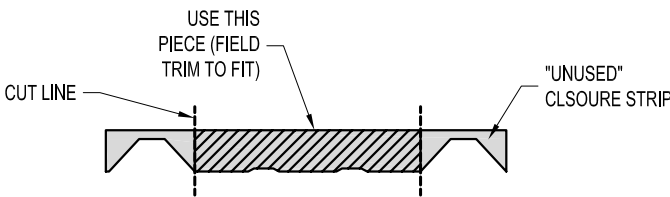
STEP #2
REMOVE RIDGE CAP AND
INSTALL THE OUTSIDE CLOSURE
STRIPS ABOUT 1" ABOVE THE CHALK
LINE WITH THE ADHESIVE SIDE DOWN
ON THE ROOF SHEETING.



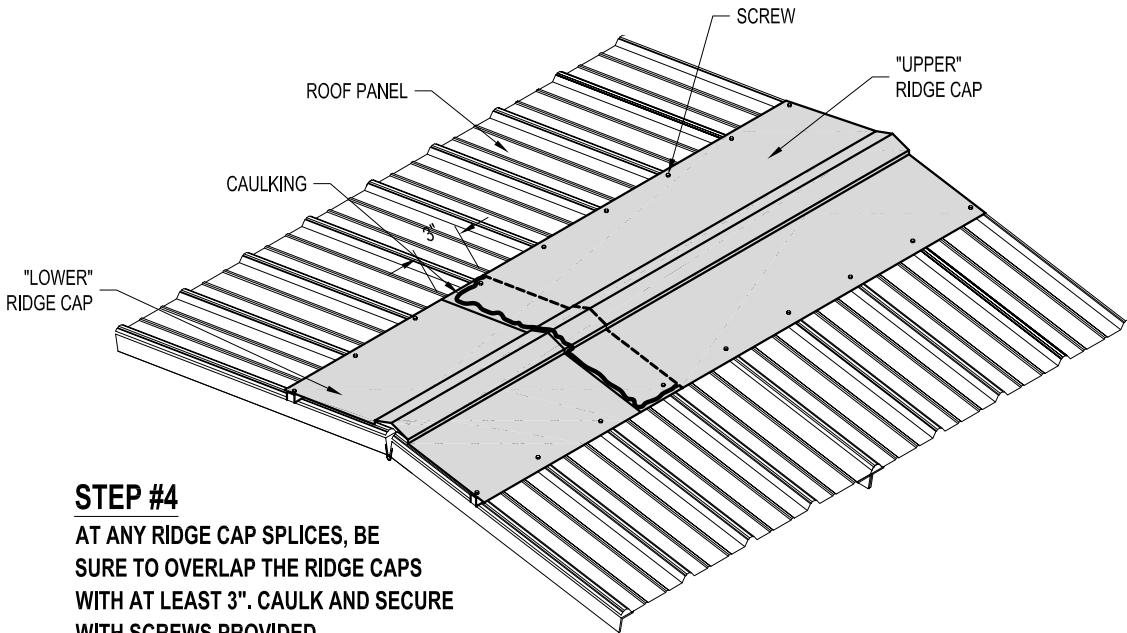
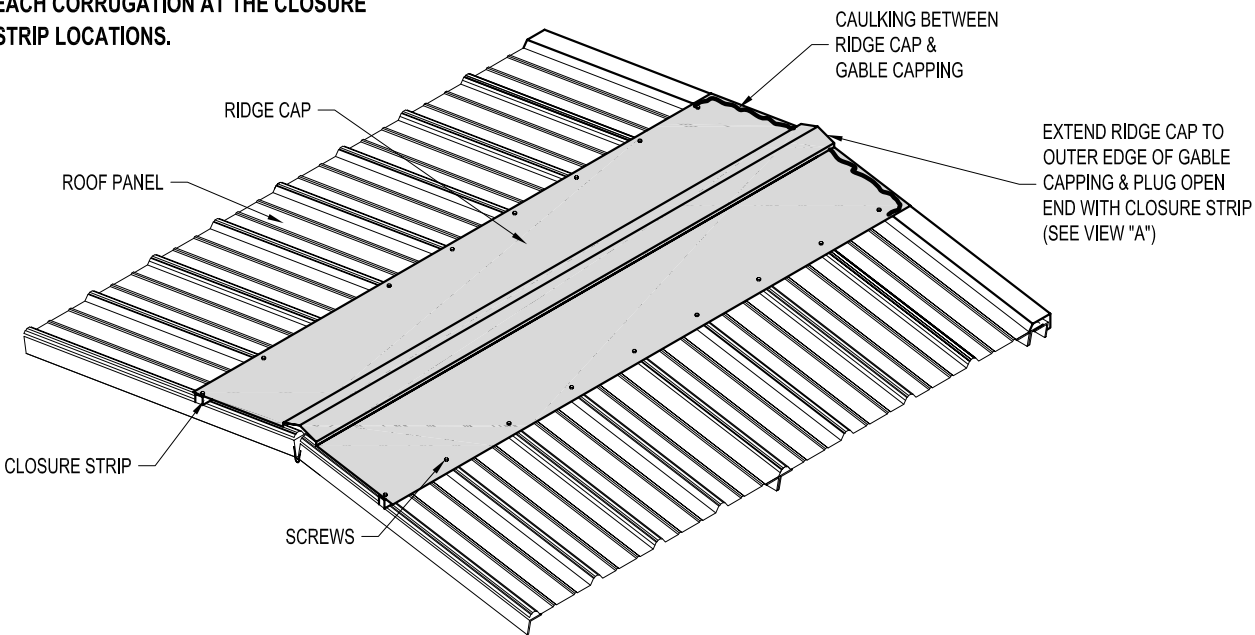
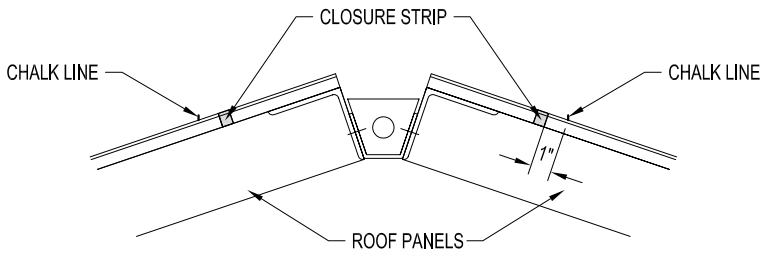
VIEW "A"



STEP #3
ATTACH THE FORMED RIDGE CAP TO THE
CORRUGATE ROOF SHEETING USING
SCREWS PROVIDED. PLACE SCREWS AT
EACH CORRUGATION AT THE CLOSURE
STRIP LOCATIONS.

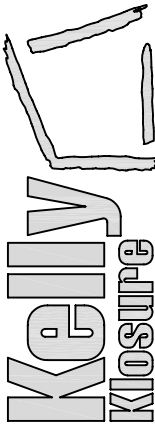


DETAIL #1



STEP #4
AT ANY RIDGE CAP SPLICES, BE
SURE TO OVERLAP THE RIDGE CAPS
WITH AT LEAST 3". CAULK AND SECURE
WITH SCREWS PROVIDED.

EASY TO ASSEMBLE PANEL
SYSTEMS FOR RELOCATABLE
ENCLOSURES FROM WEATHER
BARRIERS TO BUILDINGS



Mfr. by Kelly Group, Inc.
P.O. Box 1058 Fremont, NE 68026
Phone: 800-228-7230 Fax: 402-727-1363 Web: www.kellyklosure.com

RIDGE CAP
INSTALLATION ISOMETRIC

SHEET S.S. OF 12

PAGE TITLE:

PROJECT TITLE:

DRAWN BY:
C. KNEIFL

DATE:
5/19/2006

APPROVED BY:
DATE:

REVISION:
DATE:

SCALE:
NO SCALE

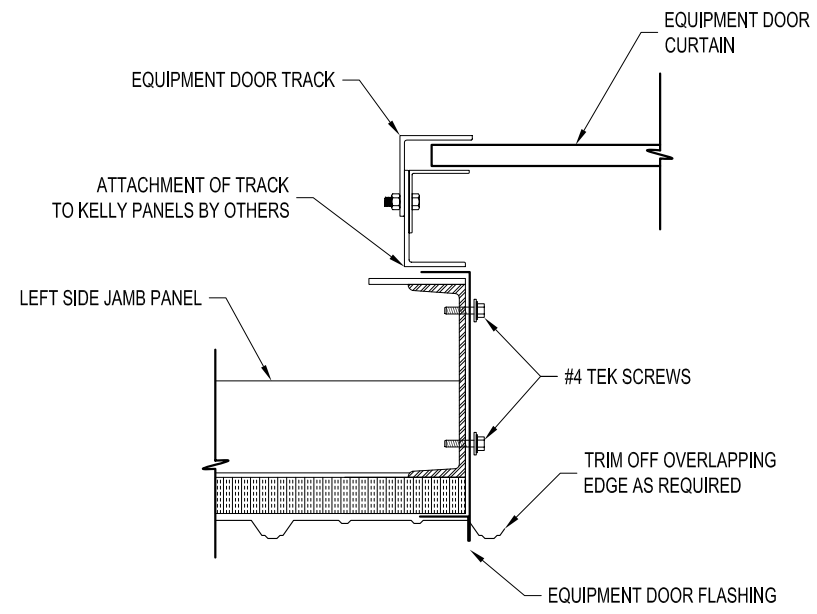
K.K. QUOTE NUMBER:

K.K. ORDER NUMBER:

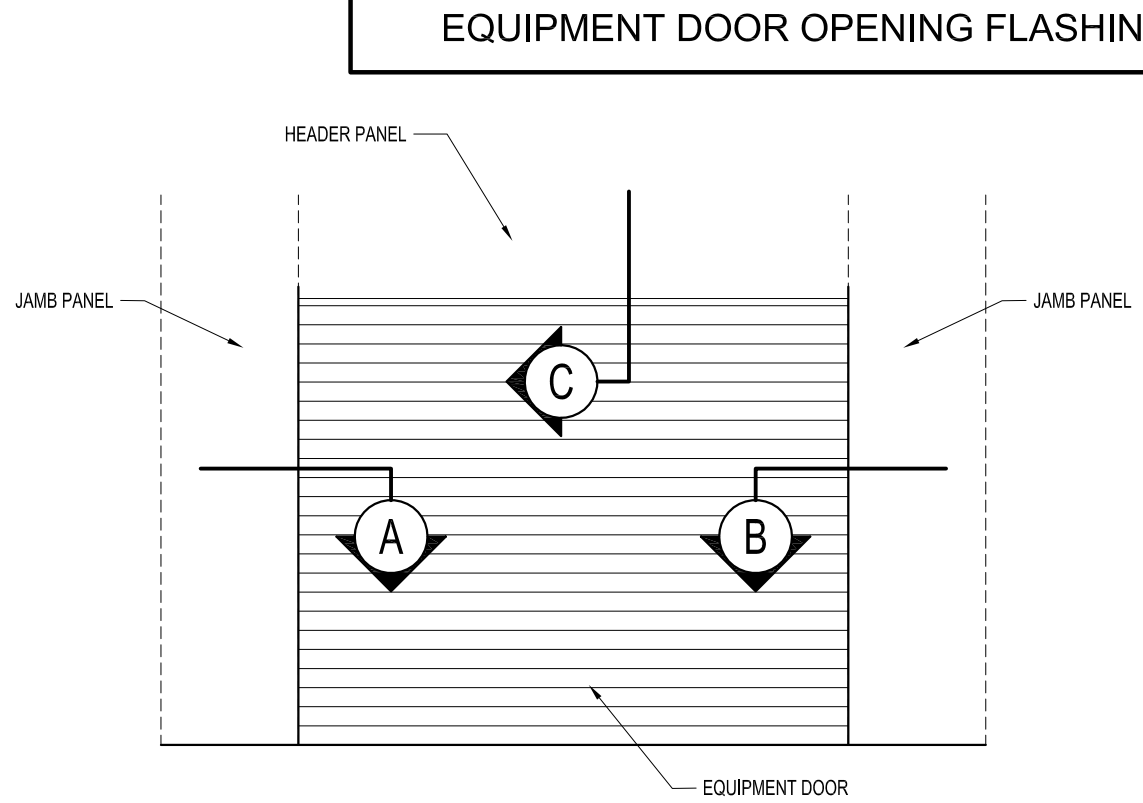
CUSTOMER P.O. NUMBER:

PROPRIETARY INFORMATION
THE DRAWINGS ARE THE PROPERTY OF KELLY GROUP, INC. AND ARE NOT TO BE REPRODUCED OR TRANSMITTED IN ANY FORM OR BY ANY MEANS, ELECTRONIC OR MECHANICAL, INCLUDING PHOTOCOPYING, RECORDING, OR BY ANY INFORMATION STORAGE AND RETRIEVAL SYSTEM, WITHOUT THE WRITTEN PERMISSION OF KELLY GROUP, INC. THE INFORMATION CONTAINED HEREIN IS FOR YOUR INFORMATION ONLY AND IS NOT TO BE USED FOR ANY OTHER PURPOSE. KELLY GROUP, INC. MAKES NO REPRESENTATION REGARDING DRAWING SCALE & ACCURACY.

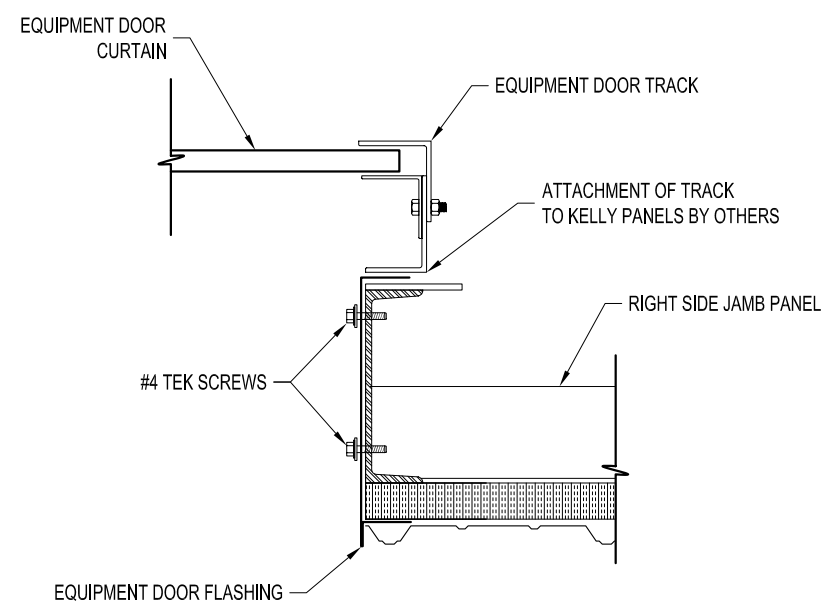
RCAP



A SECTION AT LEFT JAMB PANEL



EQUIPMENT DOOR ELEVATION



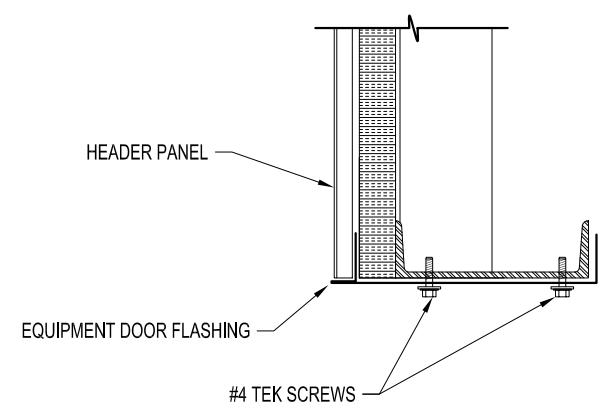
B SECTION AT RIGHT JAMB PANEL

IMPORTANT NOTE:
OVERHEAD DOORS ARE SUPPLIED ONLY!

INSTALLATION & SERVICE IS BY OTHERS!
(INSTRUCTIONS FOR OVERHEAD DOOR ARE INCLUDED WITH THE DOOR)

INSTALLATION NOTES:

1. INSTALL EQUIPMENT DOOR TRIM BEFORE INSTALLING OVERHEAD DOOR.
2. ALL WEATHER-STRIPPING AND BRUSHES TO BE INSTALLED PER DOOR MANUFACTURERS INSTRUCTIONS.



C TYPICAL SECTION AT HEADER PANEL

EQUIPMENT DOOR OPENING FLASHING

DRAWN BY: ANDY MRUZ		DATE: 4-10-08		APPROVED BY: DATE:		REVISION: DATE:		SCALE: NO SCALE		K.K. QUOTE NUMBER:	
PROJECT TITLE: EQUIPMENT DOOR OPENING DETAILS				K.K. ORDER NUMBER:		CUSTOMER P.O. NUMBER:		PROPRIETARY INFORMATION THE DRAWINGS ARE THE PROPERTY OF KELLY KLOSURE, INC. AND ARE NOT TO BE REPRODUCED OR TRANSMITTED IN ANY FORM OR BY ANY MEANS, ELECTRONIC OR MECHANICAL, INCLUDING PHOTOCOPYING, RECORDING, OR BY ANY INFORMATION STORAGE AND RETRIEVAL SYSTEM, WITHOUT THE WRITTEN PERMISSION OF KELLY KLOSURE, INC. ANY UNAUTHORIZED REPRODUCTION OR TRANSMISSION IS PROHIBITED AND WILL BE PROSECUTED TO THE FULL EXTENT OF THE LAW.			
PAGE TITLE: EQUIPMENT DOOR OPENING DETAILS				SHEET S.S. OF 13				EASY TO ASSEMBLE PANEL SYSTEMS FOR RELOCATABLE ENCLOSURES FROM WEATHER BARRIERS TO BUILDINGS Kelly Klosure Mfg. by Kelly Group, Inc. P.O. Box 1058 Fremont, NE 68026 Phone: 800-228-7230 Fax: 402-727-1363 Web: www.kellyklosure.com			

