

# KELLY KLOSURES

FREMONT, NE 68025

ASSEMBLY DRAWINGS FOR A

21'W X 8' X 45'L

KELLY KLOSURE MINI-SPAN FLATROOF ENCLOSURE

"SAMPLE ENCLOSURE"

K.K. ORDER #: SAMPLE

P.O. #: SAMPLE

#### BUILDING NOTES:

BUILDING CODE: N/A (TEMPORARY USE ONLY)  
ROOF LOAD: N/A (TEMPORARY USE ONLY)  
SNOW DRIFT LOAD: N/A (TEMPORARY USE ONLY)  
WIND LOAD: N/A (TEMPORARY USE ONLY)  
SEISMIC: N/A (TEMPORARY USE ONLY)

1. THIS BUILDING HAS BEEN DESIGNED IN ACCORDANCE WITH THE BUILDING CODE AND BASIC STRUCTURAL DESIGN DATA LISTED ABOVE. THE BUILDING HAS BEEN DESIGNED AND ENGINEERED FROM A STRUCTURAL ASPECT ONLY. OTHER CODE COMPLIANCE ISSUES SUCH AS OCCUPANCY, EGRESS, HVAC, ELECTRICAL, MECHANICAL, FIRE SAFETY ETC. IS THE RESPONSIBILITY OF THE END USER OR ITS REPRESENTATIVES.

### **IMPORTANT NOTE:**

DUE TO VIBRATION DURING THE SHIPPING PROCESS SOME TEK SCREWS THAT HOLD THE FACTORY INSTALLED EXTERIOR SHEETING, INSULATION AND INTERIOR LINER TO THE PANEL STRUCTURAL FRAME MAY HAVE BEEN LOOSENEED. THE BUILDING ERECTOR IS TO CHECK AND TIGHTEN ALL OF THE SCREWS PRIOR TO BUILDING ASSEMBLY.

### **MANUFACTURERS DISCLAIMER**

THE MANUFACTURER HAS DESIGNED AND ENGINEERED THIS SYSTEM. VARIATIONS AND/OR MODIFICATIONS TO THE SYSTEM OR COMPONENTS WILL VOID AND NULLIFY ANY AND ALL WARRANTIES, BOTH WRITTEN AND/OR IMPLIED, AND LIABILITY FOR DEFECTS IN THIS SYSTEM AND IT'S COMPONENTS. MANUFACTURER FURTHER ACCEPTS NO RESPONSIBILITY AND/OR LIABILITY FOR OBTAINING OR MAINTAINING ANY LOCAL, REGIONAL OR NATIONAL BUILDING PERMITS, INSPECTIONS OR DOCUMENTS THAT MAY BE REQUIRED.

### **BOLTING NOTE:**

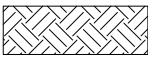
ALL BOLTS W/ NUTS SHALL BE "SNUG-TIGHT" (SNUG-TIGHTENED CONDITION IS THE TIGHTNESS THAT IS ATTAINED WITH A FEW IMPACTS OF AN IMPACT WRENCH OR THE FULL EFFORT OF AN CREW MEMBER USING AN ORDINARY SPUD WRENCH TO BRING THE CONNECTED PLIES INTO FIRM CONTACT)

DRAWING INDEX

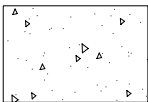
PAGE #1	PANEL & PANEL RACK HANDLING TIPS
2	ELEVATIONS
3	MATERIAL LISTS
4	ENCLOSURE LAYFLAT
5	FOUNDATION PREPARATION PLAN VIEW
6	PLAN VIEW & DETAILS
7	CROSS-SECTION & DETAILS

	SUPPLEMENT SHEETS
SS-1	MINI-SPAN FLATROOF ASSEMBLY
SS-2	DOOR INSTALLATION INSTRUCTIONS

ARCHITECTURAL LEGEND



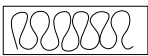
EARTH



CONCRETE



RIGID INSULATION

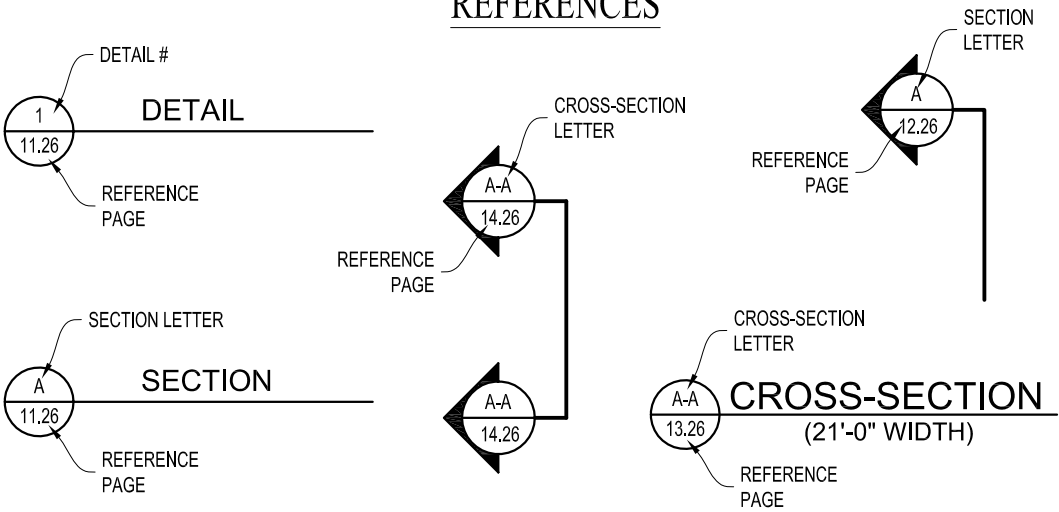


BATT INSULATION



GLASS (ELEVATION)

REFERENCES

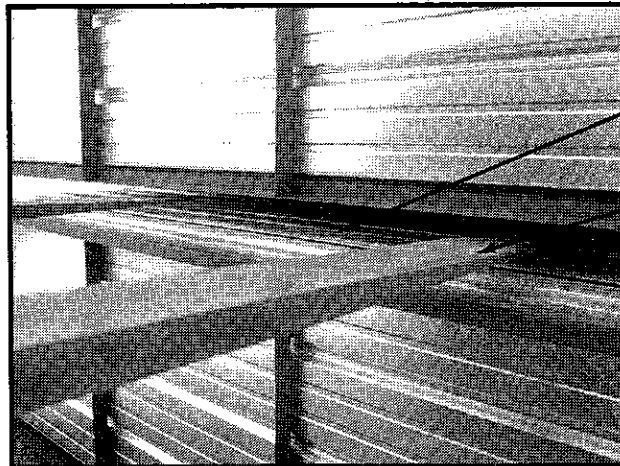


# PANEL & PANEL RACK HANDLING TIPS



## UNLOADING AND LIFTING PANEL RACKS WITH A FORKLIFT

UPPER RACKS SHOULD BE REMOVED FROM THE TRUCK FIRST AND PLACED AROUND THE WORKING AREA.



SHEETING OVERLAPS

FORKLIFT FORKS

## SEPARATING PANEL RACKS

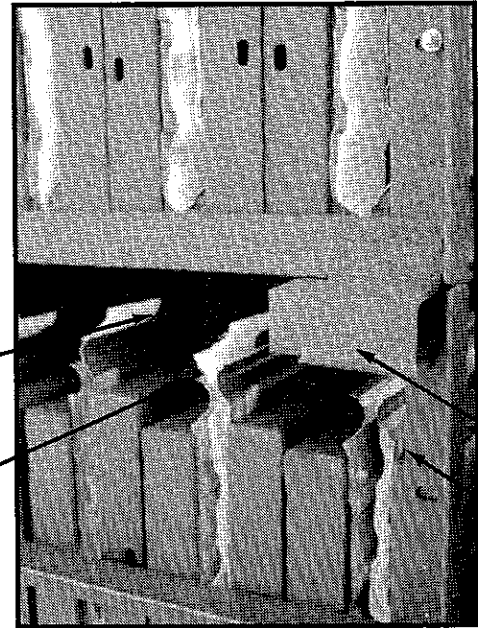
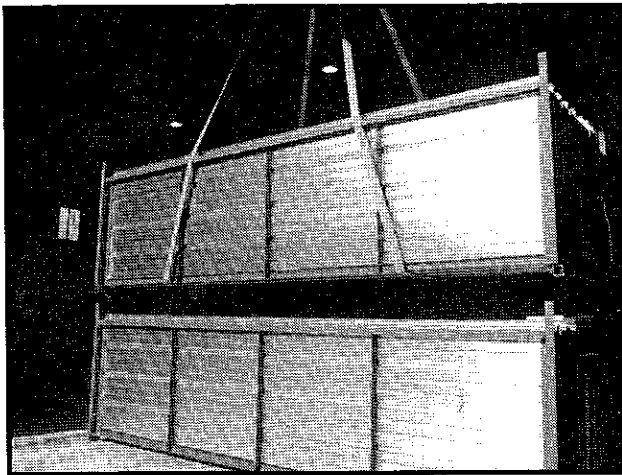
WHEN LIFTING RACKS ONE OFF THE OTHER WITH A FORKLIFT, SPECIAL CARE MUST BE TAKEN TO PREVENT THE FORKS OF THE FORKLIFT FROM DAMAGING THE SHEETING OVERLAPS THAT PROTRUDE ABOVE THE BOTTOM PANEL RACKS. THIS MATERIAL IS MORE SUSCEPTIBLE TO DAMAGE THAN THE PANEL FRAMES.

FORKLIFT FORKS

TOP RACK

SHEETING OVERLAPS  
(CAUTION !)

BOTTOM RACK



PROTECTED ZONE

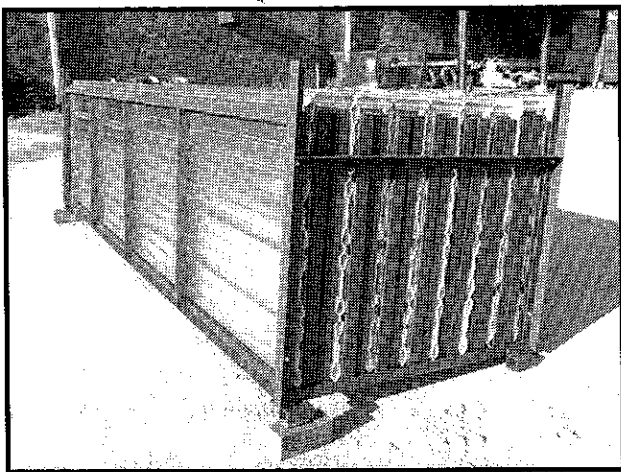
SHEETING OVERLAPS

## STORING PANEL RACKS IN STACKED POSITIONS

WHEN PANEL RACKS ARE STORED IN A STACKED (ONE ON TOP OF THE OTHER) POSITION ON SITE, THE FEET OF THE UPPER RACK MUST NEST INTO THE UPPER END OF THE BOTTOM RACK FRAMING (AS SHOWN). THIS KEEPS RACKS SPACED, MAINTAINING A PROTECTION ZONE FOR THE SHEETING OVERLAPS.

UPPER RACK FOOT

BOTTOM RACK FRAME



## REMOVING PANELS FROM RACKS

WHEN PANEL RACKS ARE REMOVED FROM THE TRUCK AND PLACED AROUND THE STAGING AREA, THE FRONT TWO CORNERS OF EACH RACK SHOULD BE BLOCKED UP. THIS PREVENTS PANELS FROM TIPPING OUT AS PANELS ARE REMOVED. IF THIS IS NOT DONE THEN THERE IS THE POTENTIAL FOR PANEL DAMAGE.



P.O. Box 1058 Fremont, Nebraska 68026  
Telephone: (402) 727-1344 800-228-7230

## PANEL & PANEL RACK HANDLING TIPS

SHEET NO.

PAGE #1

SCALE

DATE

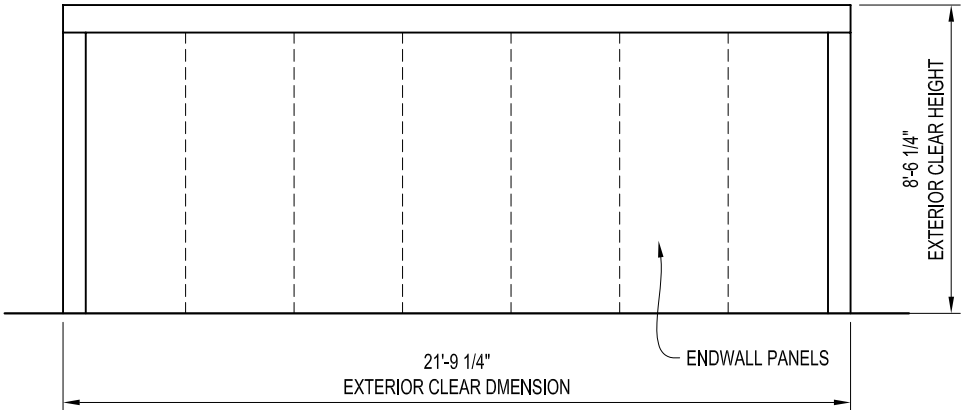
DRAWN BY

DESIGNED BY

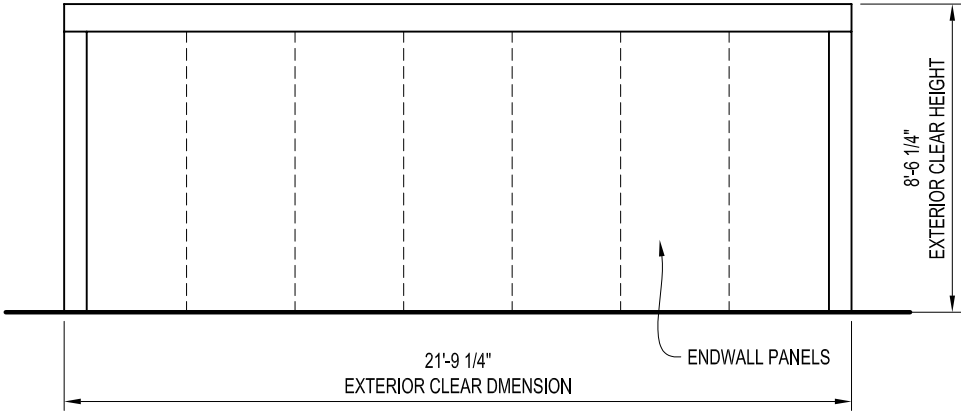
REVISED

## LIFTING PANEL RACKS WITH SLINGS

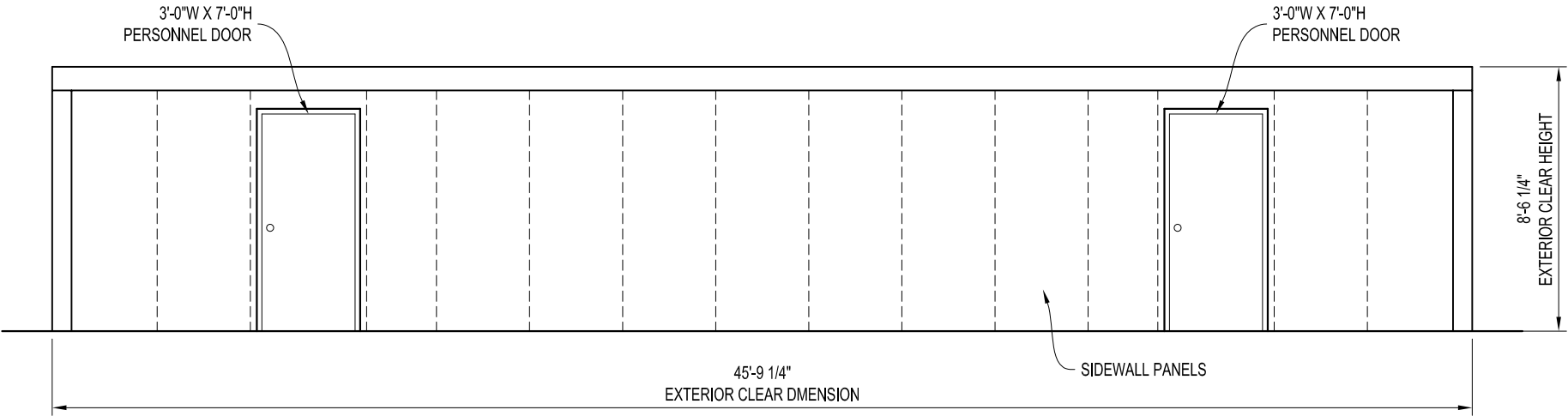
AN OPTIONAL METHOD OF UNLOADING PANELS IS SHOWN IN THIS ILLUSTRATION. USING SLINGS HUNG FROM A CRANE OR CHERRY PICKER INSTEAD OF A FORKLIFT TO UNLOAD PANEL RACKS FROM THE TRUCK.



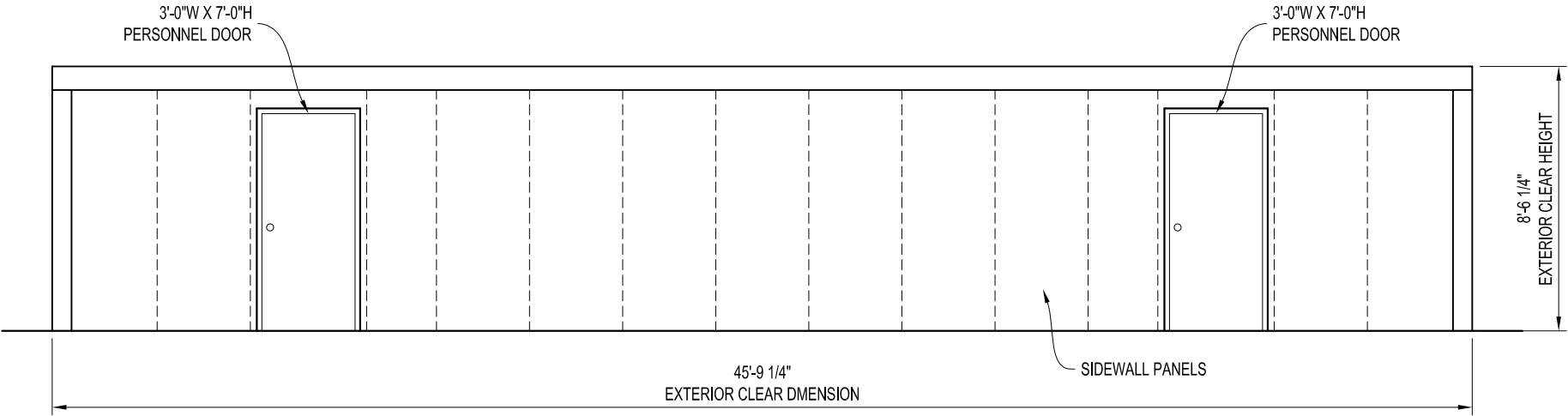
LEFT ELEVATION



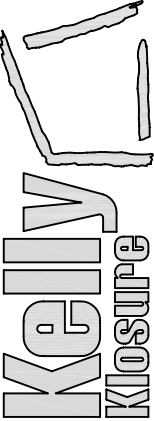
RIGHT ELEVATION



BACK ELEVATION

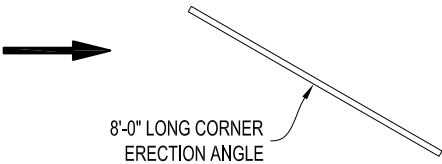


FRONT ELEVATION

DRAWN BY: ANDY MRUZ		PROJECT TITLE: SAMPLE ASSEMBLY DRAWINGS		PAGE TITLE: ELEVATIONS		SHEET 2 OF 7		<div><p>EASY TO ASSEMBLE PANEL SYSTEMS FOR RELOCATABLE ENCLOSURES FROM WEATHER BARRIERS TO BUILDINGS</p></div>	
DATE: 3-19-08	APPROVED BY: DATE:	REVISION: DATE:	SCALE: 3/16"=1'-0"	K.K. QUOTE NUMBER:	K.K. ORDER NUMBER:	BUYER:		Mfr. by Kelly Group, Inc. P.O. Box 1058 Fremont, NE 68026 Phone: 800-228-7230 Fax: 402-727-1363 Web: www.kellyklosure.com	
<small>THIS DRAWING &amp; THE DESIGN IT COVERS ARE THE EXCLUSIVE PROPERTY OF KELLY GROUP, INC. NO PART OF THIS DRAWING OR THE DESIGN IT COVERS MAY BE REPRODUCED, COPIED, LOANED, REPRODUCED, OR OTHERWISE USED EXCEPT IN THE LIMITED MANNER PERMITTED BY WRITTEN PERMISSION OF KELLY GROUP, INC. OR ITS AGENTS. KELLY GROUP, INC. AND ITS AGENTS MAKE NO REPRESENTATION OR WARRANTY AS TO THE ACCURACY OF THE INFORMATION CONTAINED HEREIN.</small>									



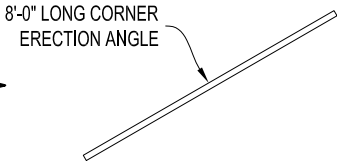
START ASSEMBLY AT THIS END & WORK IN THIS DIRECTION



Lap Direction

WP-1	WP-1	WP-1	WP-1	WP-1	WP-1
------	------	------	------	------	------

21'-0" LONG ERECTION ANGLE



WP-1	WP-1	WP-3	WP-2	WP-1	WP-1	WP-1	WP-1	WP-1	WP-1	WP-1	WP-1	WP-2	WP-3	WP-1	WP-1
------	------	------	------	------	------	------	------	------	------	------	------	------	------	------	------

Lap Direction

3'-0" LONG ERECTION ANGLES

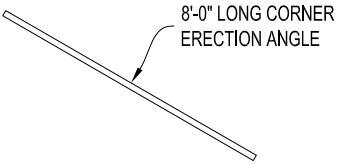
RP-1	RP-1	RP-1	RP-1	RP-1	RP-1	RP-1	RP-1	RP-1	RP-1	RP-1	RP-1	RP-1	RP-1	RP-1	RP-1
KNEE BRACE LOCATION		KNEE BRACE LOCATION		KNEE BRACE LOCATION		KNEE BRACE LOCATION		KNEE BRACE LOCATION		KNEE BRACE LOCATION		KNEE BRACE LOCATION		KNEE BRACE LOCATION	

Lap Direction

Lap Direction

WP-1	WP-1	WP-3	WP-2	WP-1	WP-1	WP-1	WP-1	WP-1	WP-1	WP-1	WP-1	WP-2	WP-3	WP-1	WP-1
------	------	------	------	------	------	------	------	------	------	------	------	------	------	------	------

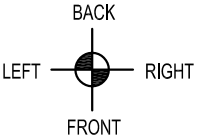
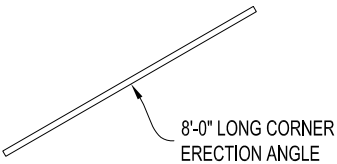
3'-0" LONG ERECTION ANGLES



21'-0" LONG ERECTION ANGLE

WP-1	WP-1	WP-1	WP-1	WP-1	WP-1
------	------	------	------	------	------

Lap Direction



ENCLOSURE LAYFLAT

DRAWN BY:  
ANDY MRUZ

DATE:  
3-19-08

APPROVED BY:  
DATE:

REVISION:  
DATE:

SCALE:  
3/16"=1'-0"

K.K. QUOTE NUMBER:

PROJECT TITLE:  
SAMPLE ASSEMBLY DRAWINGS

BUYER:

K.K. ORDER NUMBER:

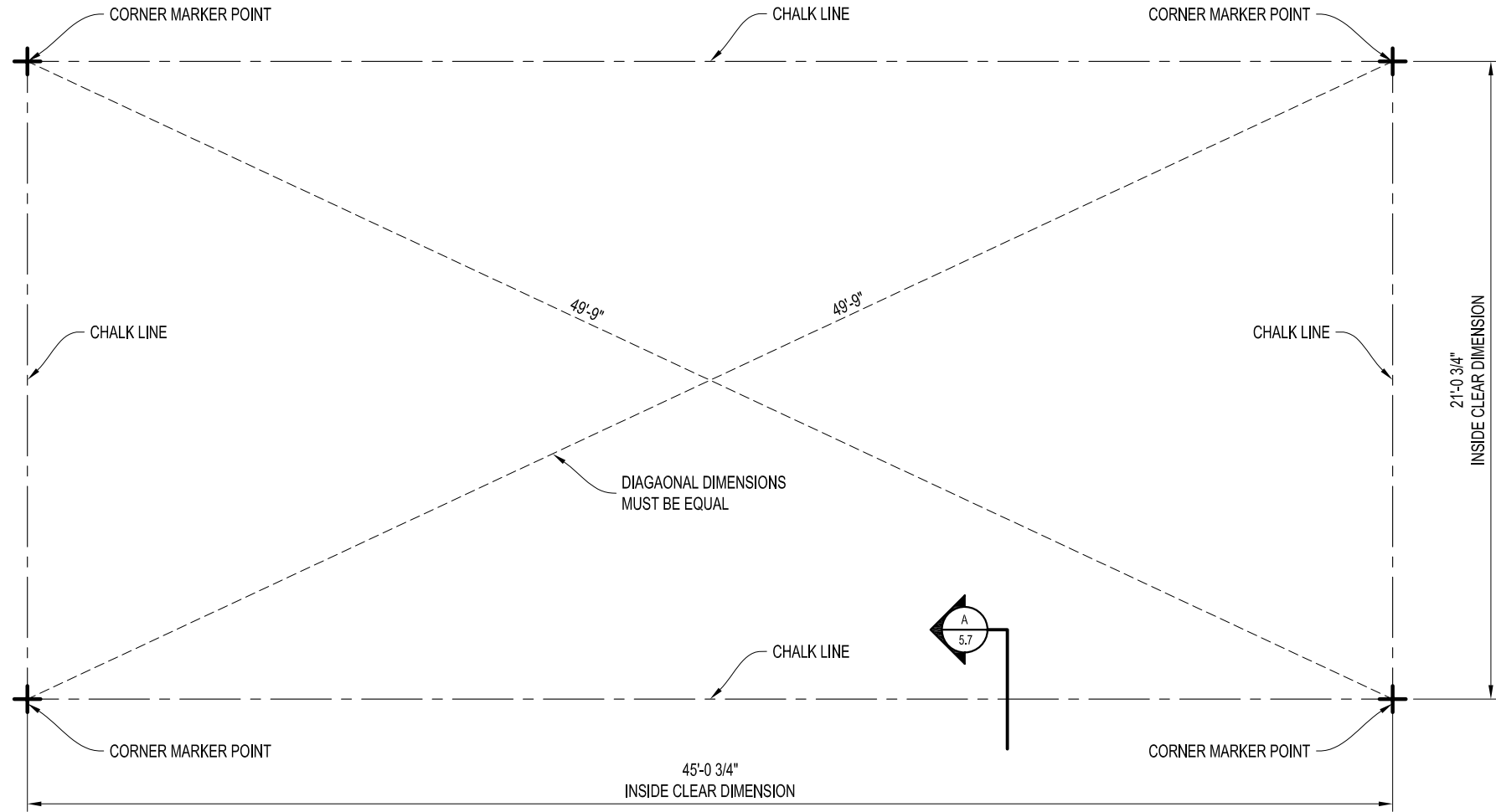
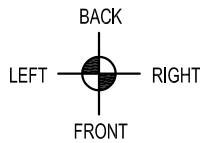
PAGE TITLE:  
ENCLOSURE LAYFLAT

SHEET 4 OF 7

PROPRIETARY INFORMATION  
THIS DRAWING & THE DESIGN IT COVERS ARE THE EXCLUSIVE PROPERTY OF KELLY GROUP, INC. NO PART OF THIS DRAWING OR DESIGN MAY BE REPRODUCED OR TRANSMITTED IN ANY FORM OR BY ANY MEANS, ELECTRONIC OR MECHANICAL, INCLUDING PHOTOCOPYING, RECORDING, OR BY ANY INFORMATION STORAGE AND RETRIEVAL SYSTEM, WITHOUT THE WRITTEN PERMISSION OF KELLY GROUP, INC. ANY UNAUTHORIZED REPRODUCTION OR USE OF THIS DRAWING OR DESIGN IS PROHIBITED AND WILL BE PROSECUTED TO THE FULL EXTENT OF THE LAW.

EASY TO ASSEMBLE PANEL  
SYSTEMS FOR RELOCATABLE  
ENCLOSURES FROM WEATHER  
BARRIERS TO BUILDINGS

Mfr. by Kelly Group, Inc.  
P.O. Box 1058 Fremont, NE 68026  
Phone: 800-228-7230 Fax: 402-727-1363 Web: www.kellyklosure.com

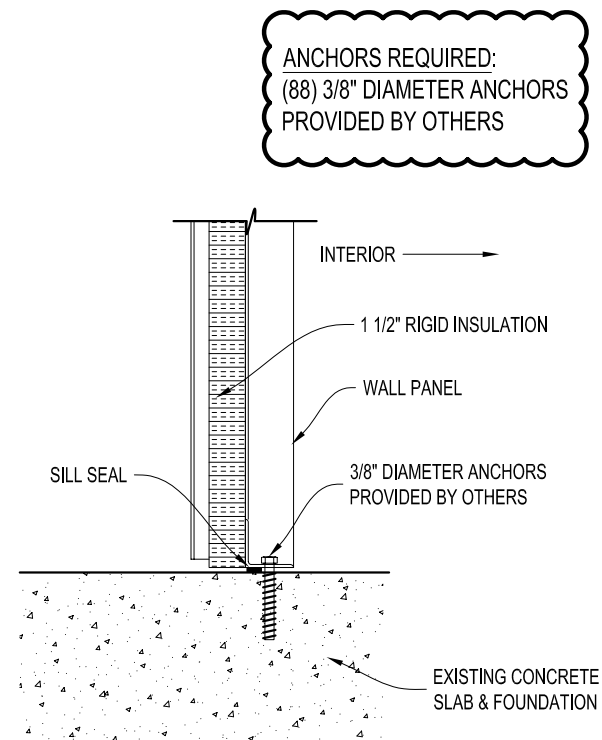


FOUNDATION PREPARATION PLAN VIEW

**A - STEP #1 - MARKER POINTS**  
USING THE DIMENSIONS AS SHOWN, MARK THE FOUR INSIDE BUILDING CORNER DIMENSIONS.

**B - STEP #2 - DIAGONAL MEASUREMENT**  
MEASURE THE DIAGONALS (DIAGONAL MEASUREMENTS MUST BE EQUAL), CORRECT IF NECESSARY BY SHIFTING THE CORNERS WITHOUT CHANGING THE LENGTH OR WIDTH DIMENSIONS.

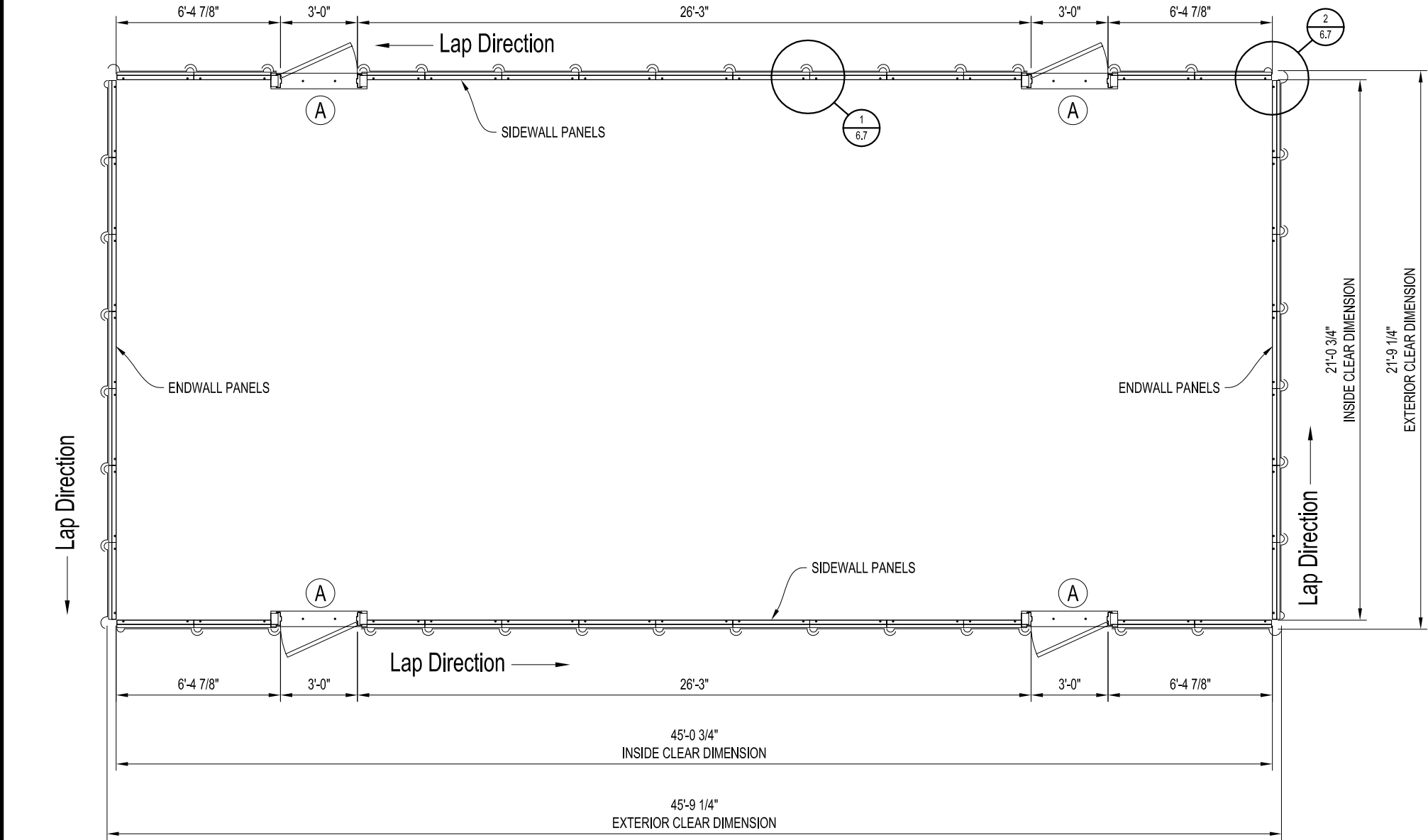
**C - STEP #3 - CHALK LINE**  
USING THE SQUARED MARKER POINTS, SNAP A CHALK LINE AS SHOWN. (THE CHALK LINE SIGNIFIES THE INSIDE BUILDING DIMENSIONS)



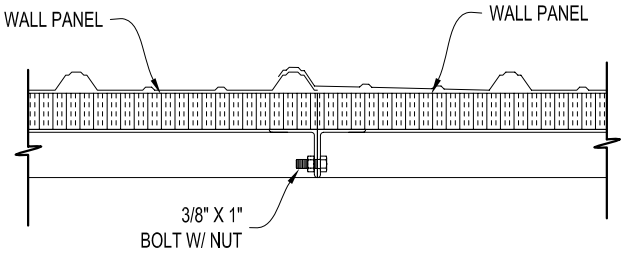
**PANEL BASE SECTION**  
SCALE: 1 1/2" = 1'-0"

DRAWN BY: ANDY MRUZ		DATE: 3-19-08		APPROVED BY: DATE:		REVISION: DATE:		SCALE: 3/16"=1'-0"		K.K. QUOTE NUMBER:	
PROJECT TITLE: SAMPLE ASSEMBLY DRAWINGS				BUYER:				K.K. ORDER NUMBER:		BUYER P.O. NUMBER:	
PAGE TITLE: FOUNDATION PREPARATION PLAN VIEW & DETAILS				SHEET 5 OF 7				PROPRIETARY INFORMATION <small>THIS DRAWING &amp; THE DESIGN IT COVERS ARE THE EXCLUSIVE PROPERTY OF KELLY GROUP, INC. NO PART OF THIS DRAWING OR DESIGN MAY BE REPRODUCED OR TRANSMITTED IN ANY FORM OR BY ANY MEANS, ELECTRONIC OR MECHANICAL, INCLUDING PHOTOCOPYING, RECORDING, OR BY ANY INFORMATION STORAGE AND RETRIEVAL SYSTEM, WITHOUT THE WRITTEN PERMISSION OF KELLY GROUP, INC. ANY REPRODUCTION OR TRANSMISSION OF THIS DRAWING OR DESIGN WITHOUT THE WRITTEN PERMISSION OF KELLY GROUP, INC. IS STRICTLY PROHIBITED. KELLY GROUP, INC. ASSUMES NO LIABILITY FOR ANY ERRORS OR OMISSIONS IN THIS DRAWING OR DESIGN.</small>			
EASY TO ASSEMBLE PANEL SYSTEMS FOR RELOCATABLE ENCLOSURES FROM WEATHER BARRIERS TO BUILDINGS								Mfg. by Kelly Group, Inc. P.O. Box 1058 Fremont, NE 68026 Phone: 800-228-7230 Fax: 402-727-1363 Web: www.kellyklosure.com			

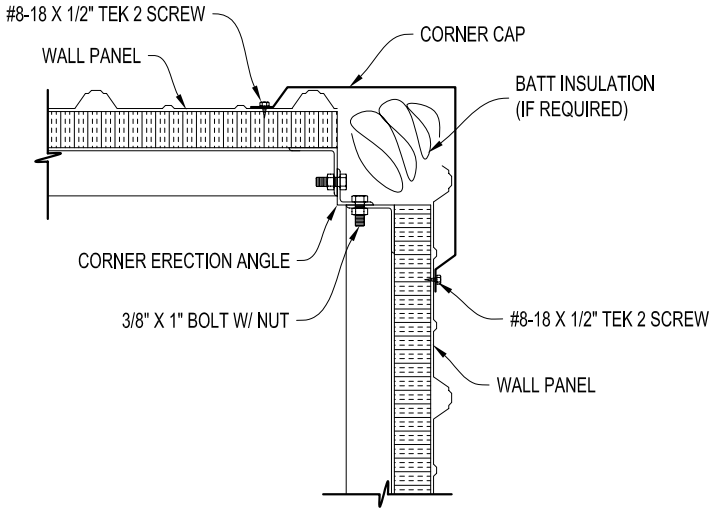




PLAN VIEW

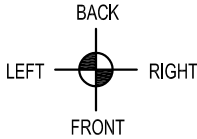


1  
6.7  
TYPICAL PANEL CONNECTION DETAIL  
SCALE: 1 1/2" = 1'-0"



2  
6.7  
TYPICAL CORNER CONNECTION DETAIL  
SCALE: 1 1/2" = 1'-0"

DOOR HARDWARE SCHEDULE		
MARK NO.	PART	DESCRIPTION
A	DOOR PANEL	3'-0"W X 7'-0"H PERSONNEL DOOR (SWING AS SHOWN ON PLAN VIEW)
	DOOR LEAF	18 GAUGE STEEL W/ HONEYCOMB CORE
	DOOR FRAME	16 GAUGE STEEL
	ENTRY LOCK	S. PARKER B9160 SERIES S.S.
	HINGES	STANLEY FBB179 4.5 X 4.5 US26D
	CLOSER	S. PARKER 954 AL
	DOOR SWEEP	MD DCV134 AL
	WEATHER STRIP	NONE



EASY TO ASSEMBLE PANEL  
SYSTEMS FOR RELOCATABLE  
ENCLOSURES FROM WEATHER  
BARRIERS TO BUILDINGS

Kelly

Klosure

Mfg. by Kelly Group, Inc.  
P.O. Box 1058 Fremont, NE 68026  
Phone: 800-228-7230 Fax: 402-727-1363 Web: [www.kellyklosure.com](http://www.kellyklosure.com)

PAGE TITLE:  
PLAN VIEW & DETAILS

SHEET 6 OF 7

PROPRIETARY INFORMATION  
THIS DRAWING & THE DESIGN IT COVERS ARE THE EXCLUSIVE PROPERTY OF KELLY GROUP, INC. NO PART OF THIS DRAWING OR DESIGN MAY BE REPRODUCED, COPIED, LOANED, REPRODUCED, CHANGED OR OTHERWISE USED EXCEPT IN THE LIMITED MANNER PERMITTED BY THE WRITTEN PERMISSION OF KELLY GROUP, INC. WITHOUT SUCH PERMISSION, ANY REPRODUCTION SHALL BE A VIOLATION OF THE APPLICABLE LAW.

DRAWN BY:  
ANDY MRUZ

DATE:  
3-19-08

APPROVED BY:  
DATE:

REVISION:  
DATE:

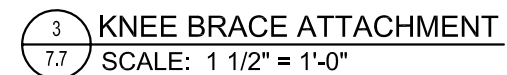
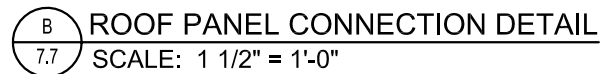
SCALE:  
3/16"=1'-0"

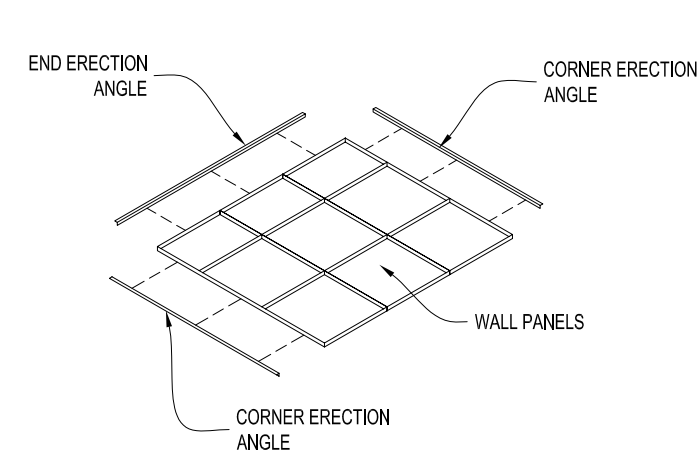
K.K. QUOTE NUMBER:

BUYER:

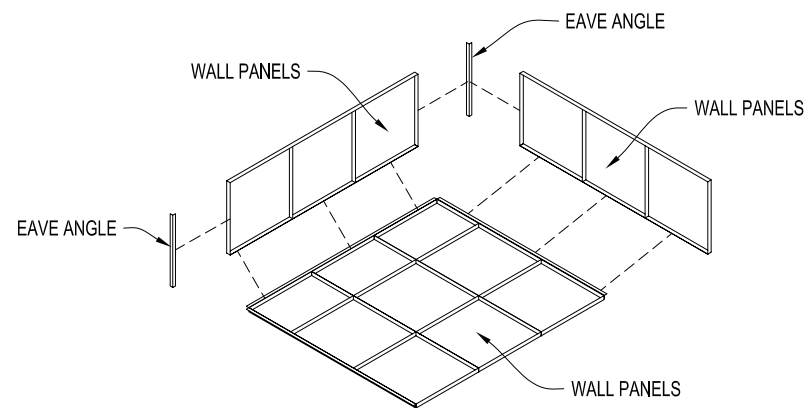
K.K. ORDER NUMBER:

BUYER P.O. NUMBER:

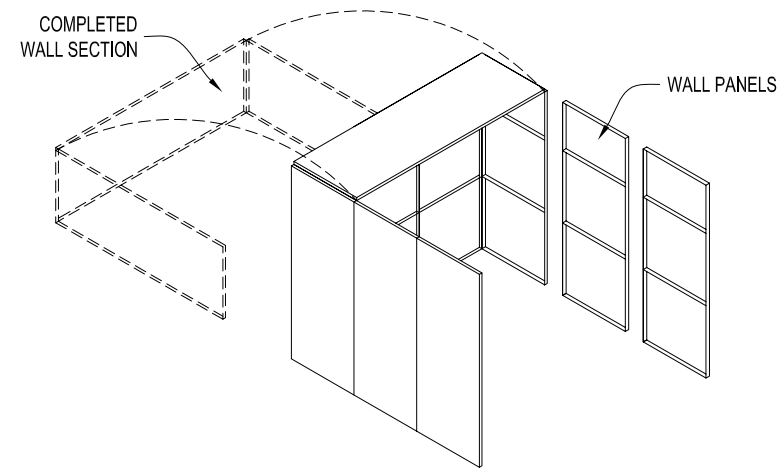




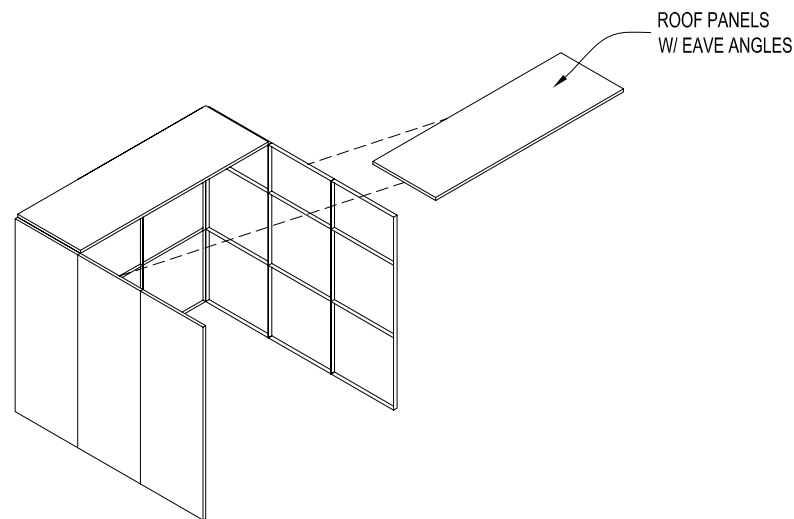
1 LAYOUT AND KEY TOGETHER THE WALL PANELS THAT MAKE UP THE ONE ENDWALL. BOLT THE END ERECTION ANGLE, AND THE CORNER ERECTION ANGLES TO THE WALL PANELS AS SHOWN ABOVE.



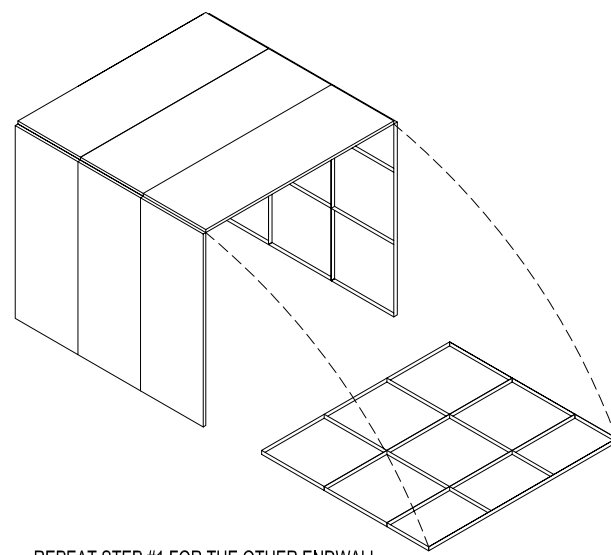
2 BOLT ONE ROOF PANEL AND TWO WALL PANELS (ONE EACH SIDE) TO THE ENDWALL SECTION. ALSO BOLT TWO (2) EAVE ANGLES TO THE WALL & ROOF PANELS AS SHOWN ABOVE.



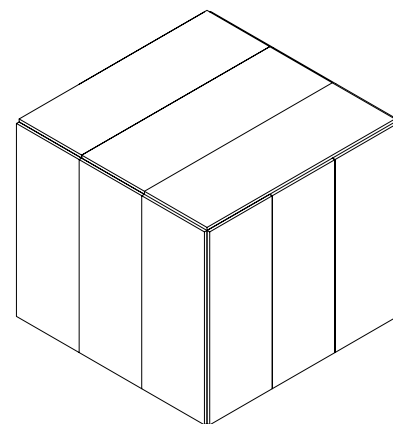
3 RAISE THE COMPLETED WALL SECTION INTO POSITION AND ANCHOR THE PANELS AT THE BASE AS REQUIRED. ADD TWO (2) MORE WALL PANELS TO EACH SIDE. (AS SHOWN ABOVE)



4 BOLT TWO (2) EAVE ANGLES TO A ROOF PANEL AND LIFT IT INTO PLACE. BOLT THE EAVE ANGLES TO THE WALL PANELS AND KEY THE ROOF PANELS TOGETHER WITH LOCKING KEYS. ADD MORE WALL & ROOF PANELS AS REQUIRED UNTIL SIDEWALLS & ROOF IS COMPLETED. (SEE STEP #3 FOR WALL PANEL INSTALLATION)



5 REPEAT STEP #1 FOR THE OTHER ENDWALL. RAISE THE WALL INTO POSITION AND BOLT IT TO THE PREVIOUS WALL AND ROOF PANELS.



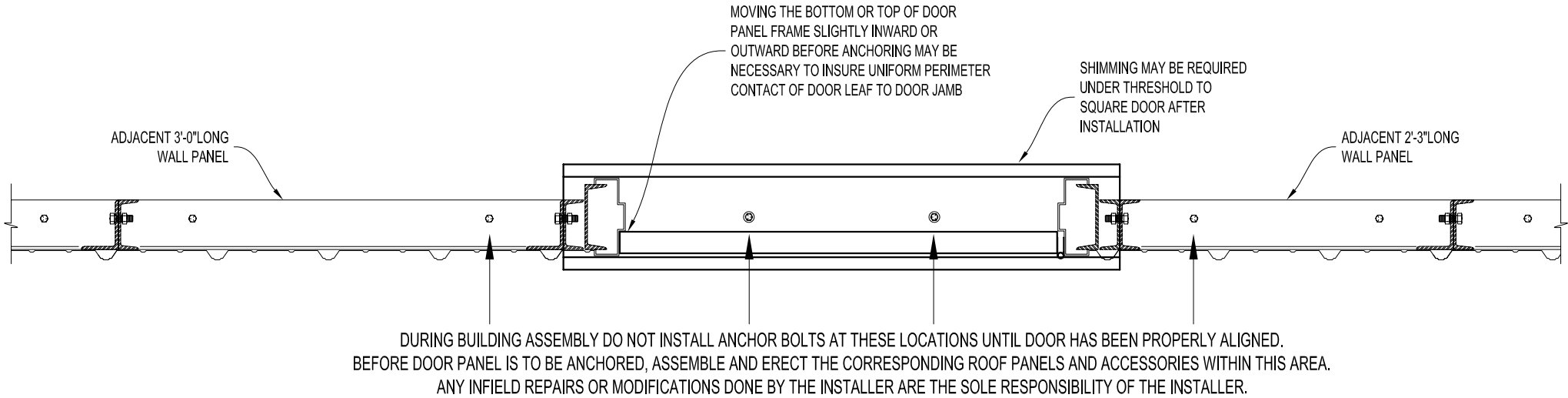
6 INSTALL ALL CORNER CAPS & FLASHING.

MSES

PROJECT TITLE:		PAGE TITLE:	
DRAWN BY: C. KNEIFL		MINI-SPAN FLAT ROOF ASSEMBLY SEQUENCE	
DATE: 3/9/2007	APPROVED BY:	SHEET S.S. OF	
DATE:			
REVISION:	K.K. ORDER NUMBER:		
DATE:	CUSTOMER P.O. NUMBER:		
SCALE: NO SCALE		PROPRIETARY INFORMATION	
K.K. QUOTE NUMBER:		<small>THE DRAWINGS &amp; THE DESIGN IT COVERS ARE THE EXCLUSIVE PROPERTY OF KELLY GROUP, INC. ANY UNAUTHORIZED REPRODUCTION OR TRANSMISSION OF THESE DRAWINGS IS PROHIBITED AND WILL BE PROSECUTED TO THE FULL EXTENT OF THE LAW. KELLY GROUP, INC. MAKES NO REPRESENTATION REGARDING DRAWING SCALE &amp; ACCURACY.</small>	

ATTENTION INSTALLER:

DOOR PANEL MUST BE POSITIONED AND ADJUSTED IN THE FIELD. DUE TO CONDITIONS OF THE FOUNDATION / FLOOR, WE HAVE NO CONTROL OVER PROPER ALIGNMENT OF DOOR PANEL.



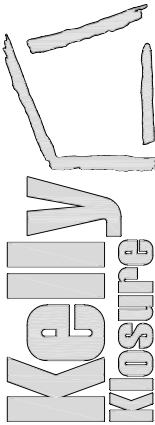
**FACTORY QUALITY CONTROL**  
DOORS ARE INSPECTED AT THE MANUFACTURING FACILITY FOR SQUARENESS AND PROPER DIMENSIONS BEFORE SHIPMENT. IF PRODUCT DAMAGE IS INCURRED DURING SHIPMENT, THIS DAMAGE MUST BE NOTED ON THE RECEIVING NOTICE AT THE TIME OF OFF LOADING AT THE BUILDING SITE. THE MANUFACTURER MUST BE NOTIFIED OF SUCH DAMAGE IMMEDIATELY.

**IMPORTANT NOTE:**  
**OVERHEAD DOORS ARE SUPPLIED ONLY!**  
**INSTALLATION & SERVICE BY OTHERS!**  
(INSTRUCTIONS FOR OVERHEAD DOOR ARE INCLUDED WITH THE DOOR)

FOR FACTORY ASSISTANCE IN DOOR ALIGNMENT CALL 800-228-7230

DOOR INSTALLATION

EASY TO ASSEMBLE PANEL  
SYSTEMS FOR RELOCATABLE  
ENCLOSURES FROM WEATHER  
BARRIERS TO BUILDINGS



Mfg. by Kelly Group, Inc.  
P.O. Box 1058 Fremont, NE 68026  
Phone: 800-228-7230 Fax: 402-727-1363 Web: [www.kellyklosure.com](http://www.kellyklosure.com)

DOOR INSTALLATION  
INSTRUCTIONS

SHEET S.S. OF

PAGE TITLE:

PROJECT TITLE:

DRAWN BY:

A. MRUZ

DATE:

2-24-06

APPROVED BY:

DATE:

REVISION:

DATE:

SCALE:

1"=1'-0"

K.K. QUOTE NUMBER:

CUSTOMER P.O. NUMBER:

K.K. ORDER NUMBER:

PROPRIETARY INFORMATION  
THE DRAWINGS ARE THE PROPERTY OF KELLY GROUP, INC. AND ARE NOT TO BE REPRODUCED OR TRANSMITTED IN ANY FORM OR BY ANY MEANS, ELECTRONIC OR MECHANICAL, INCLUDING PHOTOCOPYING, RECORDING, OR BY ANY INFORMATION STORAGE AND RETRIEVAL SYSTEM, WITHOUT THE WRITTEN PERMISSION OF KELLY GROUP, INC. THE INFORMATION CONTAINED HEREIN IS FOR THE EXCLUSIVE USE OF THE USER AND IS NOT TO BE REPRODUCED OR TRANSMITTED IN ANY FORM OR BY ANY MEANS, ELECTRONIC OR MECHANICAL, INCLUDING PHOTOCOPYING, RECORDING, OR BY ANY INFORMATION STORAGE AND RETRIEVAL SYSTEM, WITHOUT THE WRITTEN PERMISSION OF KELLY GROUP, INC. OF NE MAKES NO REPRESENTATION REGARDING DRAWING SCALE & ACCURACY.